

Audley St Elphin's Park

22 Devonshire Court
Second Floor Resale Apartment



2 bedroom & study second floor apartment

This south facing dual aspect two bedroom apartment is located on the top floor of Devonshire Court, with view reaching over to Bonsall.

Property specifications:

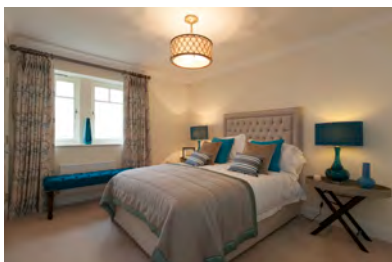
- Separate fully fitted SieMatic kitchen with American style fridge/freezer
- Dual aspect living/dining room with fitted fireplace and French doors leading onto the balcony, as well as a separate Juliette balcony
- Master bedroom with en-suite shower and fitted wardrobes
- Second bedroom and family bathroom with jacuzzi bath
- Separate study with views
- Thermaskirt in master bedroom and living/dining room

Price £450,000 (other fees apply)

Monthly Management Fee £704.34

Annual Ground Rent £500

Viewings by appointment with the sales office



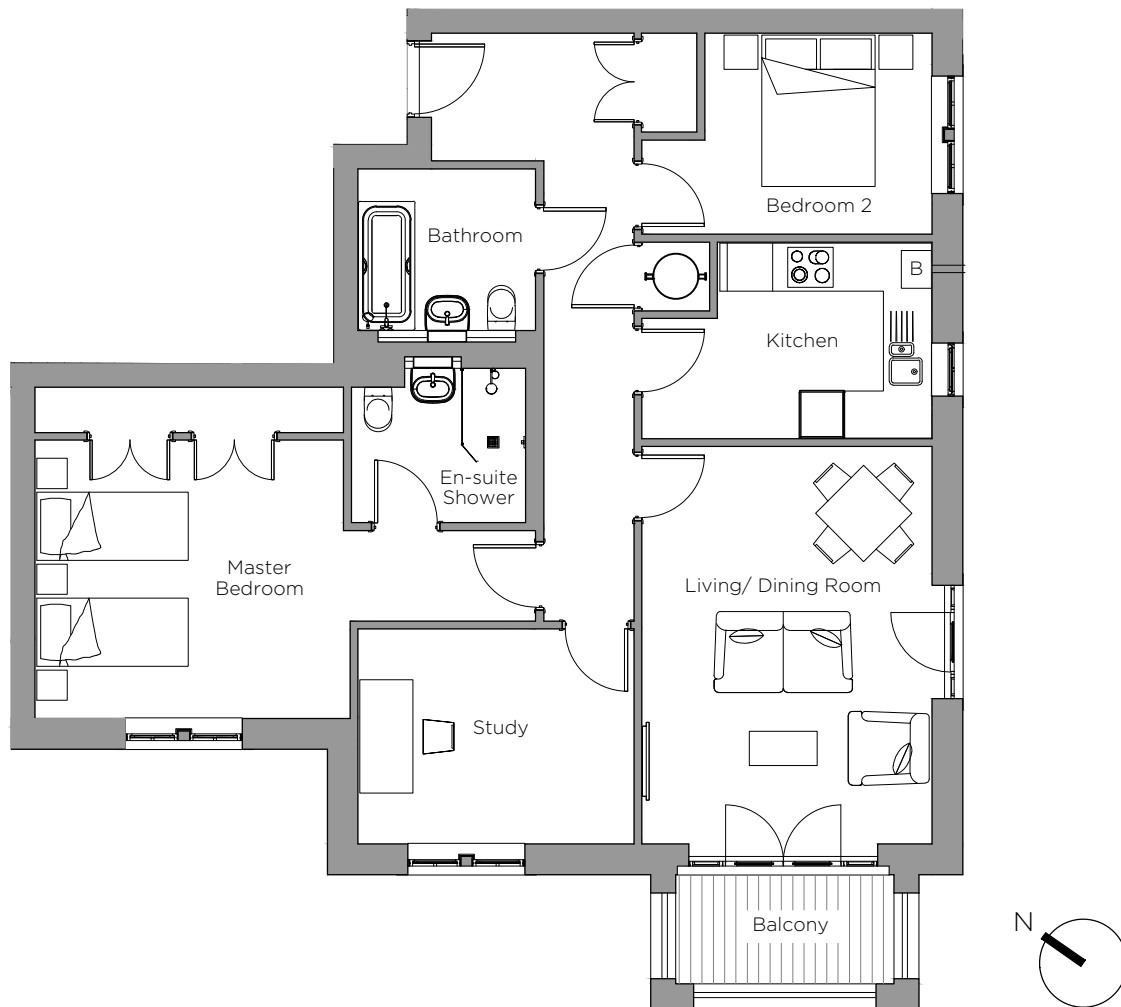
Photos for illustration purposes only

Audley St Elphin's Park
St Elphin's Park, Dale Road South, Darley Dale, Matlock DE4
2RH 01629 733 337 stelpinssales@audleyvillages.co.uk
www.audleyvillages.co.uk



Audley St Elphin's Park

22 Devonshire Court
Second Floor Resale Apartment



| Internal Measurements | Metric (m) | Imperial (ft) |
|-----------------------|---------------|---------------|
| Living/Dining Room | 5.24m x 3.82m | 17'2" x 12'6" |
| Kitchen | 2.82m x 2.60m | 9'3" x 8'6" |
| Master Bedroom | 4.36m x 4.16m | 14'4" x 13'8" |
| Bedroom 2 | 2.99m x 2.68m | 9'10" x 8'9" |
| Study | 3.68m x 2.83m | 12'1" x 9'3" |
| Balcony (approx) | 3.00m x 1.51m | 9'10" x 4'11" |



Audley St Elphin's Park
St Elphin's Park, Dale Road South, Darley Dale, Matlock, DE4 2RU
01629 733337 stelphinssales@audleyvillages.co.uk
www.audleyvillages.co.uk

These floorplans are illustrative and for marketing purposes only. Maximum measurements are shown. Wardrobes not included in the overall room dimensions. Furniture shown to illustrate possible room layouts and not included in sale. Designs vary according to plot. All details should be checked at the Sales Office.
January 2018

