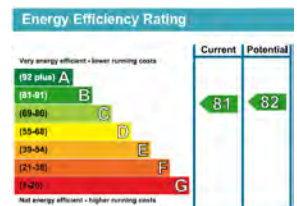
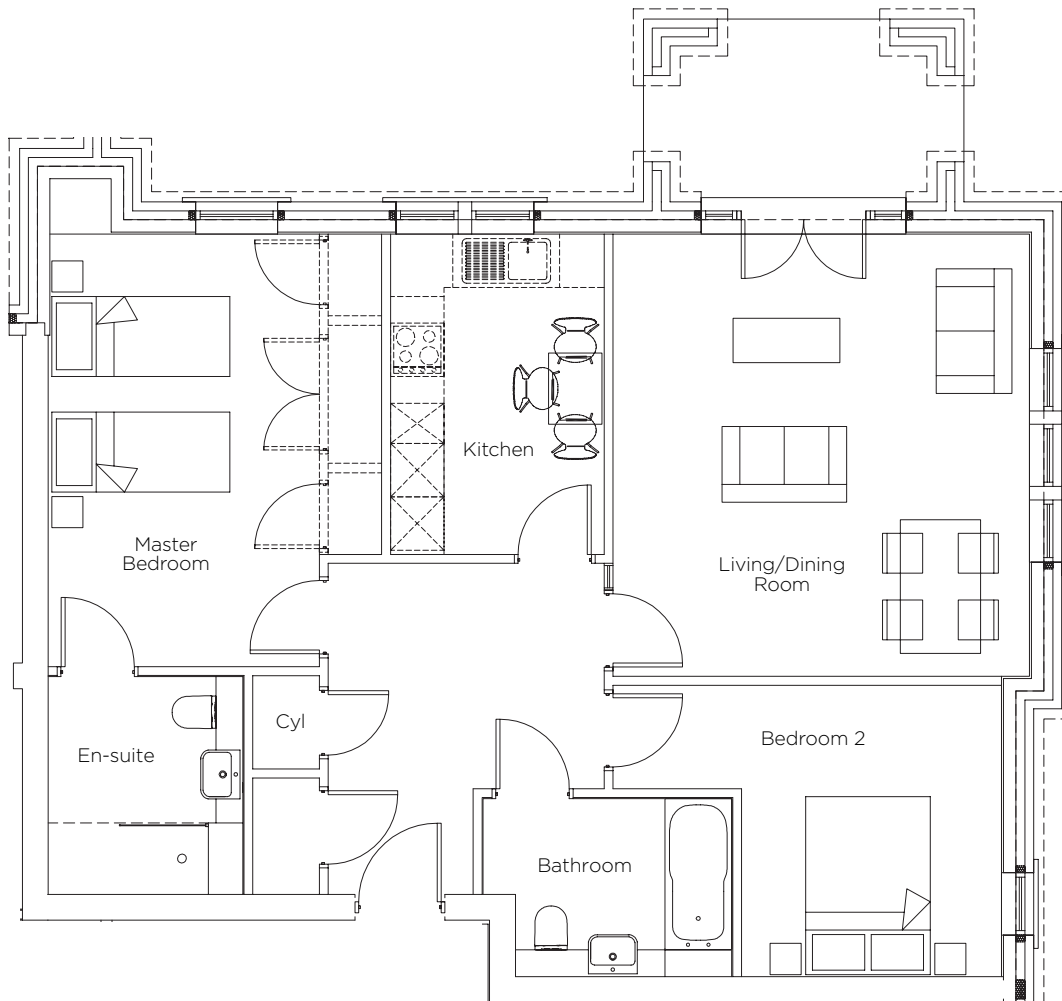
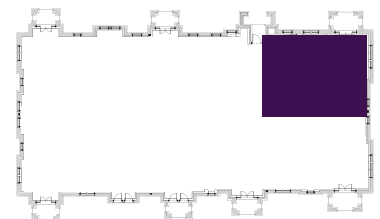


# Audley St Elphin's Park

1 Robinson Court  
Ground Floor Pre-owned Apartment



| Internal Measurements | Metric (m)    | Imperial (ft)  |
|-----------------------|---------------|----------------|
| Kitchen               | 2.40m x 3.60m | 7'10" x 11'9"  |
| Living/Dining Room    | 4.70m x 4.95m | 15'5" x 16'2"  |
| Master Bedroom        | 3.75m x 4.85m | 12'3" x 15'10" |
| Bedroom 2             | 2.95m x 3.30m | 9'8" x 10'9"   |



Audley St Elphin's Park  
St Elphin's Park, Dale Road South, Darley Dale, Matlock DE4 2RH  
01629 733 337 [stelphinssales@audleyvillages.co.uk](mailto:stelphinssales@audleyvillages.co.uk)  
[www.audleyvillages.co.uk](http://www.audleyvillages.co.uk)

Built-in wardrobes in bedrooms have not been included in the overall dimensions.  
Maximum measurements shown. These pages are intended for marketing purposes only.  
Designs vary according to plot and all details should be checked at the Sales Office.  
July 2017



# Audley St Elphin's Park

1 Robinson Court  
Ground Floor Pre-owned Apartment



## 2 bedroom ground floor apartment

This immaculate two bedroom dual aspect apartment is situated on the ground floor of Robinson Court, next to St Elphin's house with the Audley Club and The Orangery Restaurant & Bistro.

This bright property has luxury Villeroy & Boch bathrooms and a Siematic kitchen with integrated fridge-freezer, washer-dryer, microwave, cooker and dishwasher.

Property specifications:

- Quality SieMatic fitted kitchen with integrated appliances
- Dual aspect living room with French doors leading onto the terrace
- Master bedroom with fitted wardrobes
- Underfloor heating

**Price £300,000** (other fees apply)

Monthly Management Fee £704.34

Annual Ground Rent £250

Viewings by appointment with the sales office

Audley St Elphin's Park  
St Elphin's Park, Dale Road South, Darley Dale, Matlock DE4 2RH  
01629 733 337 stelphinssales@audleyvillages.co.uk  
www.audleyvillages.co.uk

