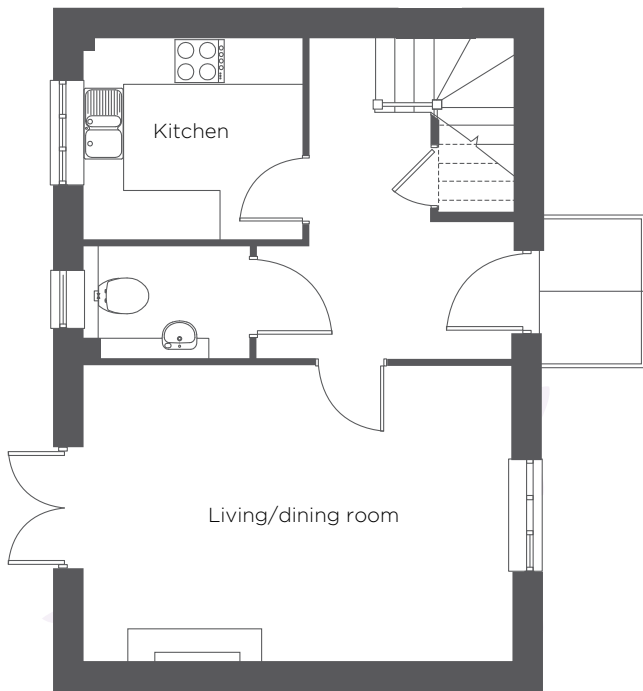
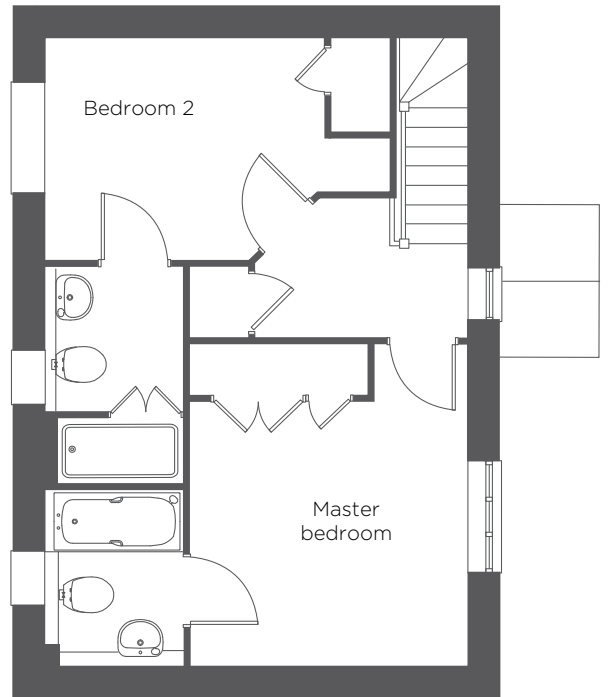


Audley St Elphin's Park

11 Crompton Close
Pre-owned Cottage

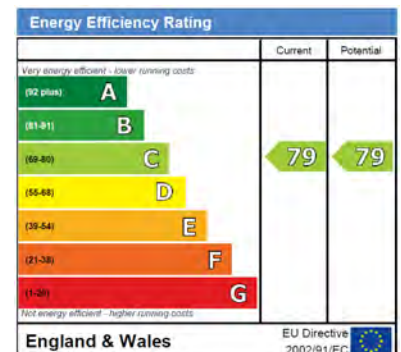


Ground floor



First floor

Internal Measurements	Metric (m)	Imperial (ft)
Living/Dining Room	3.65m x 5.30m	12'1" x 17'4"
Kitchen	2.55m x 2.70m	8'4" x 8'10"
Bedroom 2	2.75m x 4.15m	9'2" x 13'9"
Master Bedroom	3.90m x 3.45m	12'11" x 11'5"



Audley St Elphin's Park
St Elphin's Park, Dale Road South, Darley Dale, Matlock DE4 2RH
01629 733 337 stelphinssales@audleyvillage.co.uk
www.audleyvillages.co.uk

Built-in wardrobes in bedrooms have not been included in the overall dimensions.
Maximum measurements shown. These pages are intended for marketing purposes only.
Designs vary according to plot and all details should be checked at the Sales Office.
July 2017



Audley St Elphin's Park

11 Crompton Close
Pre-owned Cottage



2 bed semi detached cottage

Located in Crompton Close, moments from St Elphin's House, this semi-detached cottage has a living/dining room opening onto a private south-facing terrace with garden.

Property specifications:

- 2 double bedrooms, both en-suite
- Shaker style kitchen with integrated appliances
- South-facing aspect
- Front and rear garden
- Parking space with car port

Price £289,950 (other fees apply)

Monthly Management Fee £619.20

Annual Ground Rent £100

Viewings by appointment with the sales office

Audley St Elphin's Park
St Elphin's Park, Dale Road South, Darley Dale, Matlock DE4 2RH
01629 733 337 stelphinsales@audleyvillages.co.uk
www.audleyvillages.co.uk

