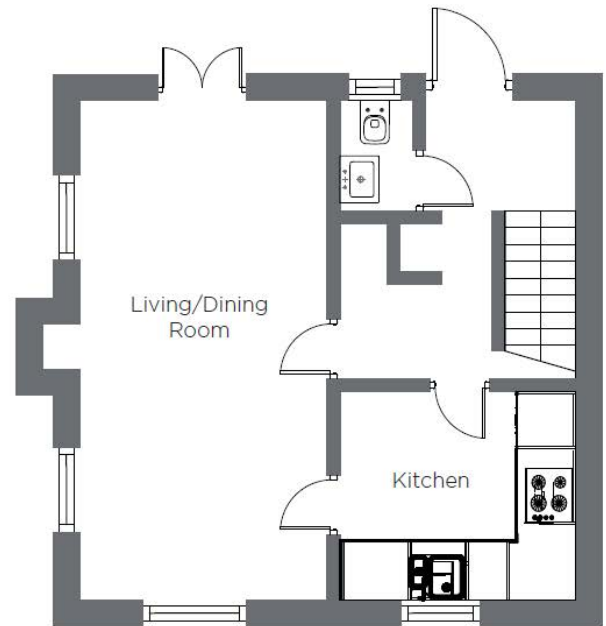
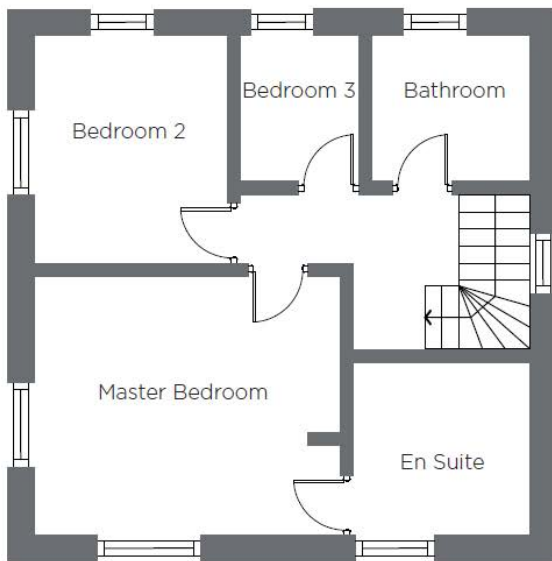


Audley Mote House

2 Gatehouse Lodge
Detached cottage



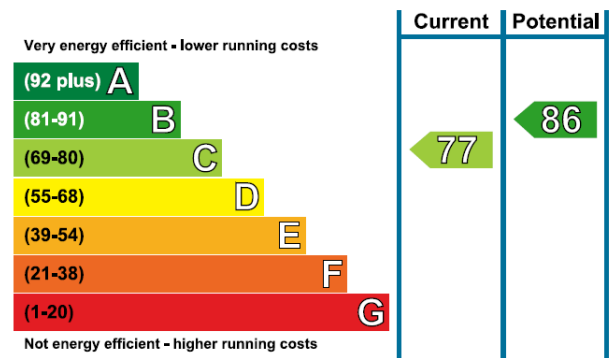
Internal Measurements

	Metric	Imperial
Living/Dining Room	7.55 x 3.85m	24' 8" x 12' 6"
Kitchen	3.50 x 3.00m	11' 5" x 9' 8"
Master Bedroom	4.75 x 3.80m	15' 6" x 12' 5"
Bedroom 2	3.60m x 3.00m	11' 8" x 9' 8"
Bedroom 3/Study	2.40m x 2.05m	7' 9" x 6' 7"

Audley Mote House

Mote Park, Nr Bearstead, ME15 8GA 01622 737 279
motehousesales@audleyvillages.co.uk
www.audleyvillages.co.uk

Built-in wardrobes in bedrooms have not been included in the overall dimensions. Maximum measurements shown. These pages are intended for marketing purposes only. Designs vary according to plot and all details should be checked at the Sales Office. March 2018



Audley Mote House

2 Gatehouse Lodge
Detached cottage



3 bedroom detached cottage

This delightful 3 bedroom detached cottage is situated close to Mote House and offers spectacular views across Mote park. The living room opens onto a large connecting patio on the south west elevations of the house.

- Fully fitted luxury kitchen with Quartz worktops; integral appliances included
- Downstairs cloakroom
- Large living/dining room opening onto a large patio
- Master bedroom with large en suite shower room and fitted wardrobes. Also includes air conditioning
- Guest double and single bedrooms
- Guest bathroom upstairs

Price £599,950 (other fees apply)

Viewings highly recommended

Book by appointment with the sales office

Audley Mote House
Mote Park, Nr Bearstead, ME15 8GA 01622 737 279
motehousesales@audleyvillages.co.uk
www.audleyvillages.co.uk

