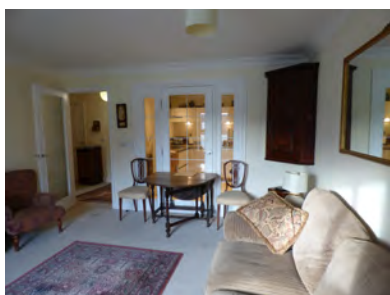


Audley Inglewood

30 Inglewood House
Second Floor Resale Apartment



Second floor 1 bedroom apartment

This beautifully presented apartment has a sunny aspect and views across Bevan Court to the grounds beyond. The charming reception room has adjacent kitchen which can also be accessed from the hall.

Property specifications:

- Bright living/dining room
- Fully fitted kitchen
- Bedroom with fitted wardrobes
- Bathroom with bath and separate walk-in shower
- Storage cupboard in the hallway

Price £295,000 (other fees apply)

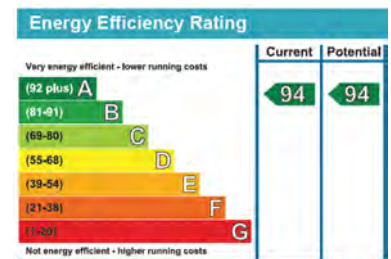
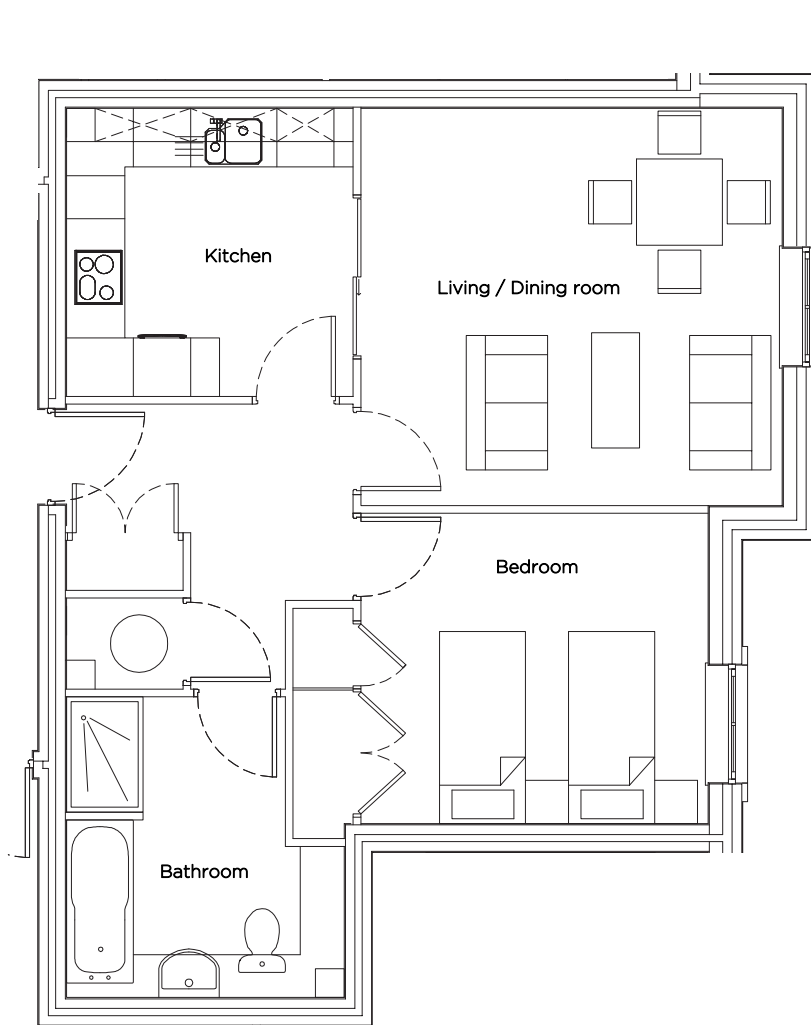
Viewings by appointment with the sales office.

Audley Inglewood
Templeton Road, Kintbury, Hungerford RG17 9AA
01488 682100 inglewoodsales@audleyvillages.co.uk
www.audleyvillages.co.uk



Audley Inglewood

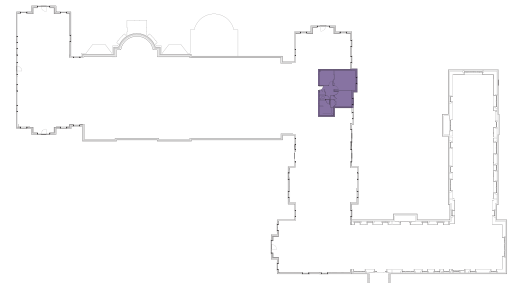
30 Inglewood House
Second Floor Resale Apartment



Internal Measurements Metric (m) Imperial (ft)

Kitchen	3.00m x 3.00m	9'10" x 9'10"
Living / Dining room	4.40m x 4.15m	14'5" x 13'7"
Master bedroom	3.25m x 4.35m	10'8" x 14'3"

Total 597 Sq.ft.



Audley Inglewood
Templeton Road, Kintbury, Hungerford RG17 9AA
01488 682100 inglewoodsales@audleyvillages.co.uk
www.audleyvillages.co.uk

Built-in wardrobes in bedrooms have not been included in the overall dimensions.
Maximum measurements shown. These pages are intended for marketing purposes only. Designs vary according to plot and all details should be checked at the Sales Office. September 2017

