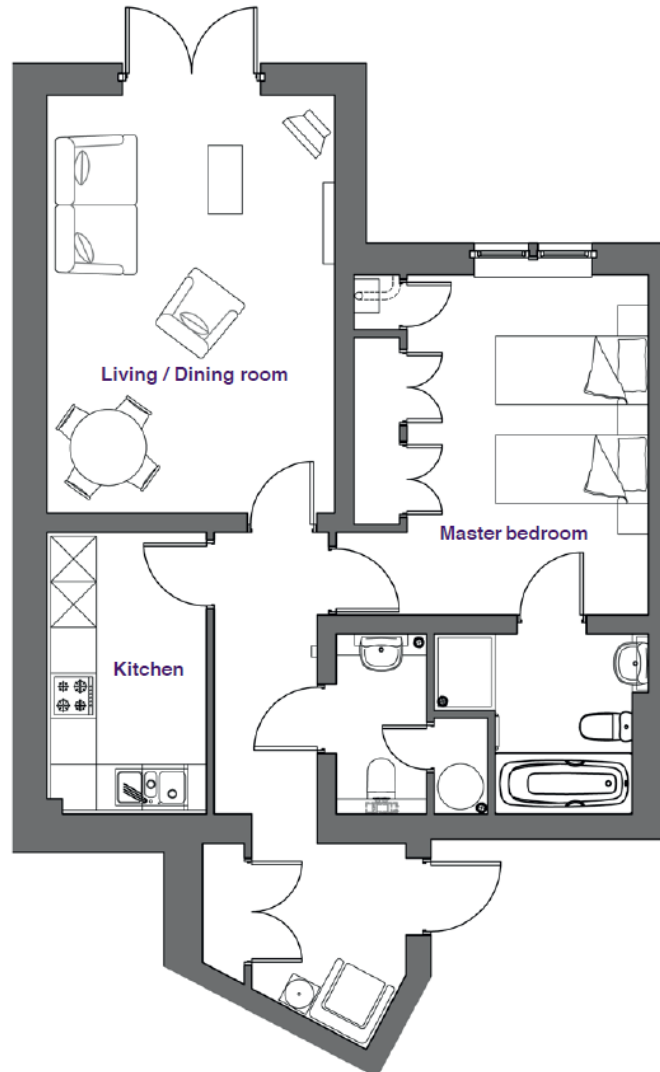
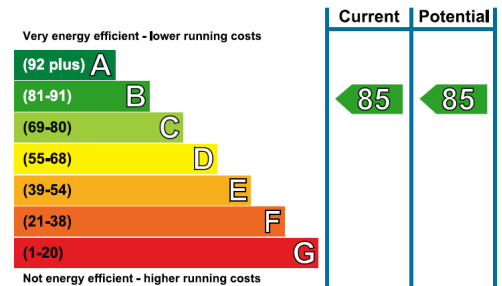


Audley Clevedon

1 Padgett Court
Ground Floor Resale Apartment



Internal Measurements	Metric (m)	Imperial (ft)
Living/Dining Room	5.55m x 3.78m	18'2" x 12'5"
Kitchen	3.70m x 2.10m	12'2" x 6'10"
Master Bedroom	4.47m x 3.11m	14'8" x 10'2"



Audley Clevedon
Ben Rhydding Drive, Ben Rhydding, Ilkley, West Yorkshire LS29 8AQ
01943 601 964, clevedonsales@audleyvillages.co.uk
www.audleyvillages.co.uk

Built-in wardrobes in bedrooms have not been included in the overall dimensions. Maximum measurements shown. These pages are intended for marketing purposes only. Designs vary according to plot and all details should be checked at the Sales Office. April 2018



Audley Clevedon

1 Padgett Court
Ground Floor Resale Apartment



1 bedroom ground floor apartment

An extremely well presented and well laid out one bedroom apartment with a private terrace overlooking open countryside.

Situated within the heart of the Wharfe Valley, Audley Clevedon is surrounded by the famous Moors to the south and the River Wharfe to the north.

- Spacious living/dining room with double opening French doors to the private terrace
- A fully fitted Siematic kitchen with integrated appliances
- Fully fitted bedroom with matching wardrobes, chest of drawers/cupboards
- En-suite bathroom/shower room and separate cloakroom
- Viewing highly recommended

Price £310,000 (other fees apply)

Viewings by appointment with the sales office

Audley Clevedon
Ben Rhydding Drive, Ben Rhydding, Ilkley, West Yorkshire LS29 8AQ
01943 601 964, clevedonsales@audleyvillages.co.uk
www.audleyvillages.co.uk

Photos for illustration purposes only

