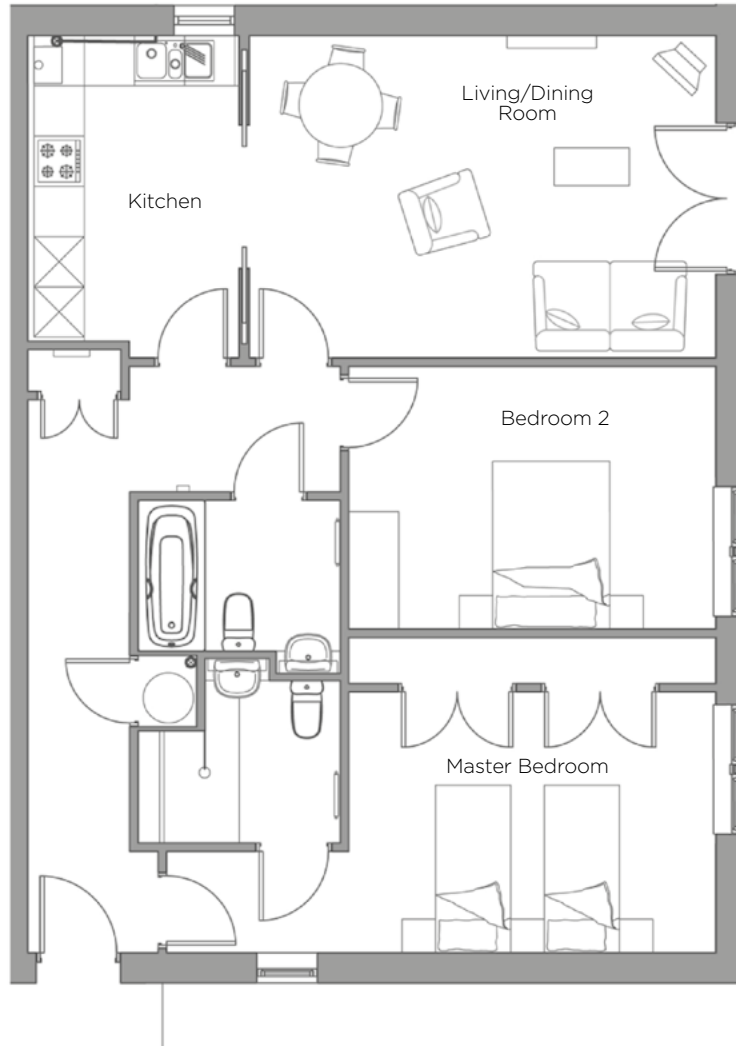
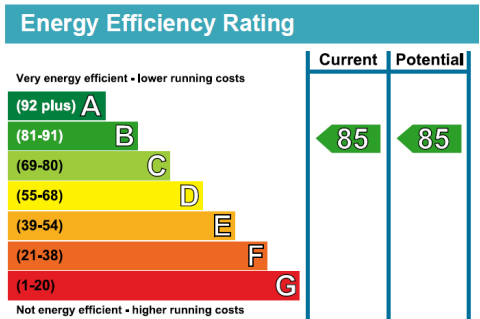


# Audley Clevedon

12 Padgett Court  
First Floor Resale Apartment



Internal Measurements	Metric (m)	Imperial (ft)
Living/Dining Room	5.58m x 3.85m	18'3" x 12'8"
Kitchen	3.67m x 2.53m	12'0" x 8'3"
Bedroom 2	4.39m x 3.14m	14'5" x 10'3"
Master Bedroom	4.93m x 3.12m	14'5" x 10'3"



Audley Clevedon  
Ben Rhydding Drive, Ben Rhydding, Ilkley, West Yorkshire LS29 8AQ  
01943 601 964 clevedonsales@audleyvillages.co.uk  
www.audleyvillages.co.uk

Built-in wardrobes in bedrooms have not been included in the overall dimensions.  
Maximum measurements shown. These pages are intended for marketing purposes only.  
Designs vary according to plot and all details should be checked at the Sales Office.  
July 2017



# Audley Clevedon

12 Padgett Court  
First Floor Resale Apartment



## 2 bedroom first floor apartment

This beautiful South facing property has a separate kitchen opening onto a living/dinning room with a Juliet balcony. The master bedroom has an en-suite and fitted wardrobes. The property has plenty of storage throughout and a family bathroom.



Situated within the heart of the Wharfe Valley, Audley Clevedon is surrounded by the famous Moors to the south and the River Wharfe to the north.

**Price £349,000** (other fees apply)

Viewings by appointment with the sales office.



Audley Clevedon  
Ben Rhydding Drive, Ben Rhydding, Ilkley, West Yorkshire LS29 8AQ  
01943 601 964 [clevedonsales@audleyvillages.co.uk](mailto:clevedonsales@audleyvillages.co.uk)  
[www.audleyvillages.co.uk](http://www.audleyvillages.co.uk)

