

10 Padgett Court



Two bedroom first floor apartment

This spacious two double bedroom apartment is located on the first floor of Padgett Court. The two bedrooms include fitted wardrobes with the Main bedroom also benefitting from an en suite shower room. The property has an additional family bathroom off the spacious hallway which provides ample storage. The large living/dining room features a Juliet balcony with south-facing, woodland views.

Property specifications

- Two double bedrooms with fitted wardrobes
- En suite shower room in Main bedroom
- South facing views and Juliet balcony in living/dining room
- Spacious hallway with storage
- Separate kitchen with floor to ceiling windows

Guide Price £455,000 (other fees apply)

Monthly management fee £867.40

Ground rent: £250

Bistro credit £73.74

Council Tax band: E

Viewing by appointment with the sales office.



10 Padgett Court

Internal Measurements Metric (m) Imperial (ft)

Kitchen 3.58 x 2.89 11'9" x 9'6"

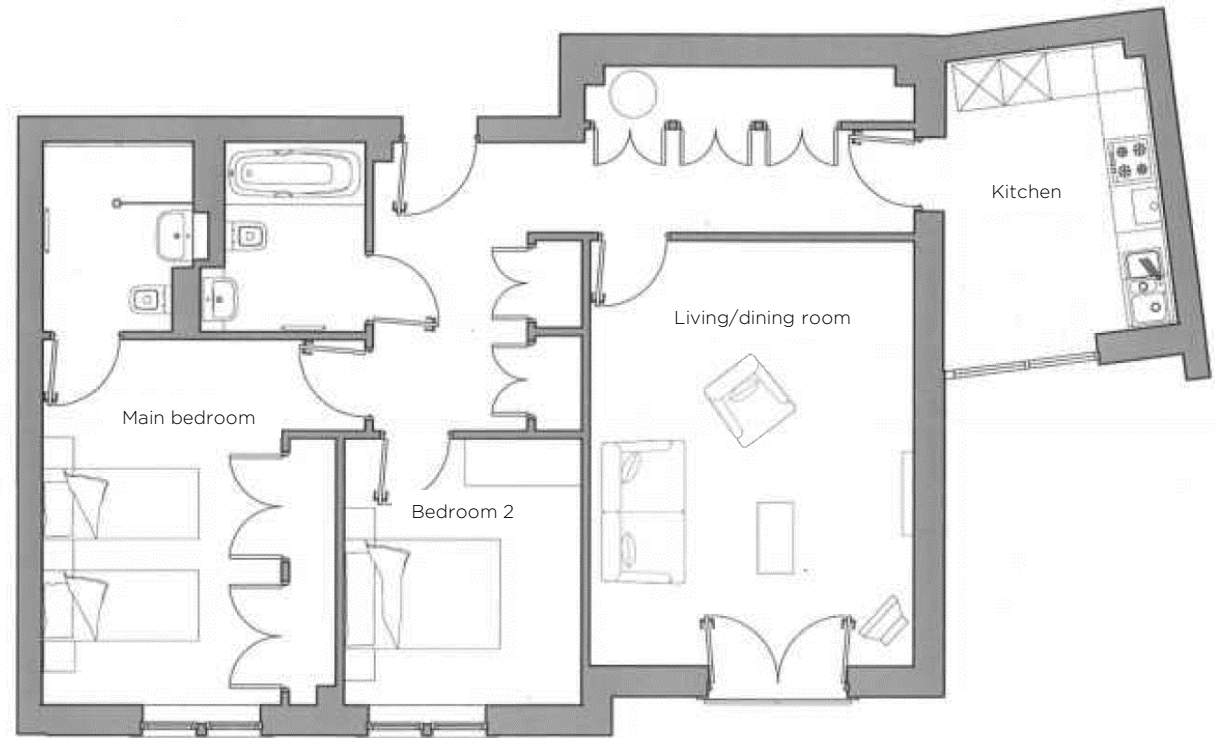
Living/Dining room 5.27 x 4.06 17'4" x 13'4"

Main bedroom 4.51 x 2.93 14'9" x 9'7"

Bedroom 2 3.30 x 3.09 10'10" x 10'2"

Total sq. ft 1,004

Built in wardrobes in bedrooms have not been included in the overall dimensions. Maximum measurements shown.



Score	Energy rating	Current	Potential
92+	A		
81-91	B	86 B	86 B
69-80	C		
55-68	D		
39-54	E		
21-38	F		
1-20	G		

These pages are intended for marketing purposes only. Designs vary according to plot and all details should be checked at the Sales office. April 2022.

