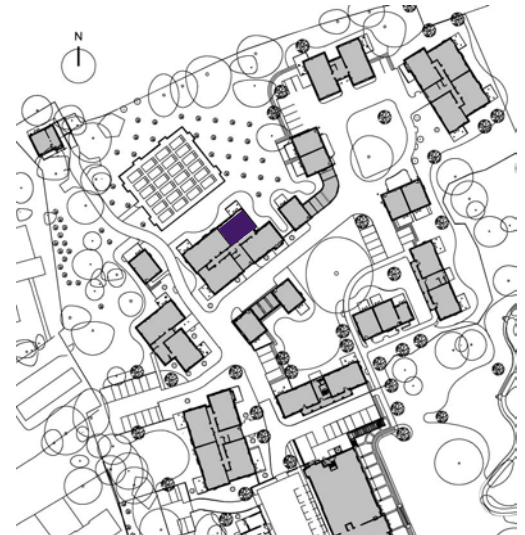
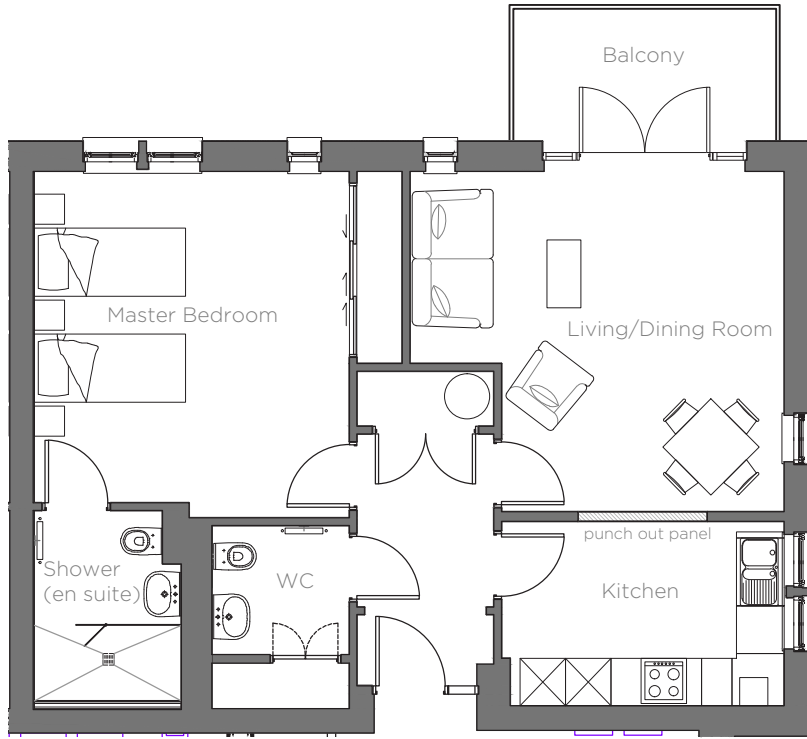


Audley Chalfont Dene

9 Selman Way
First floor resale apartment



Internal Measurements	Metric (m)	Imperial (ft)
Living/Dining Room	4.95m x 4.50m	16'3" x 14'9"
Kitchen	3.74m x 2.44m	12'3" x 8'
Master Bedroom	4.38m x 4.17m	14'4" x 13'8"
Balcony (approx)	3.48m x 1.75m	11'5" x 5'9"
Apartment Sqft	750	

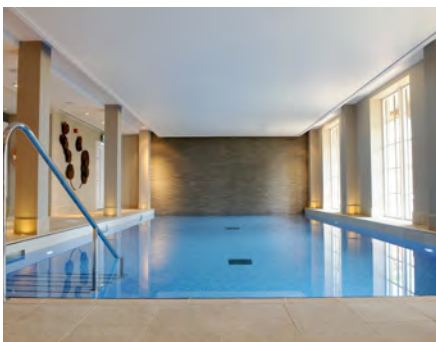
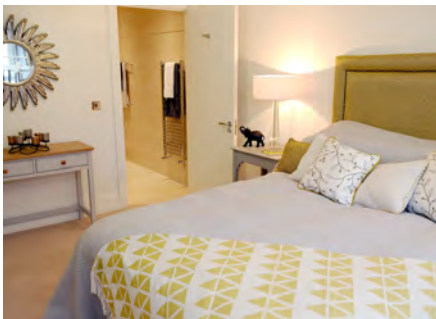
Audley Chalfont Dene
Rickmansworth Lane, Chalfont St Peter SL9 0LX
01494 876173 chalfontsales@audleyvillages.co.uk
www.audleyvillages.co.uk

Built-in wardrobes in bedrooms have not been included in the overall dimensions. Maximum measurements shown. These pages are intended for marketing purposes only. Designs vary according to plot and all details should be checked at the Sales Office. January 2017



Audley Chalfont Dene

9 Selman Way
First floor resale apartment



1 bed first floor apartment

A first floor one bedroom apartment with a private balcony looking towards the gardening club.

Property specifications:

- Large living/dining room with French doors opening on to the private balcony
- Master bedroom with en-suite shower room and fitted wardrobes
- High quality SieMatic kitchen with Corian worktops
- Guest WC

Price £520,000 (other fees apply)

Viewings by appointment with the sales office

Audley Chalfont Dene
Rickmansworth Lane, Chalfont St Peter SL9 0LX
01494 876173 chalfontsales@audleyvillages.co.uk
www.audleyvillages.co.uk

