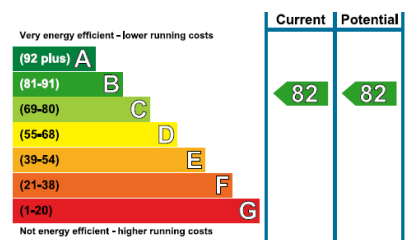
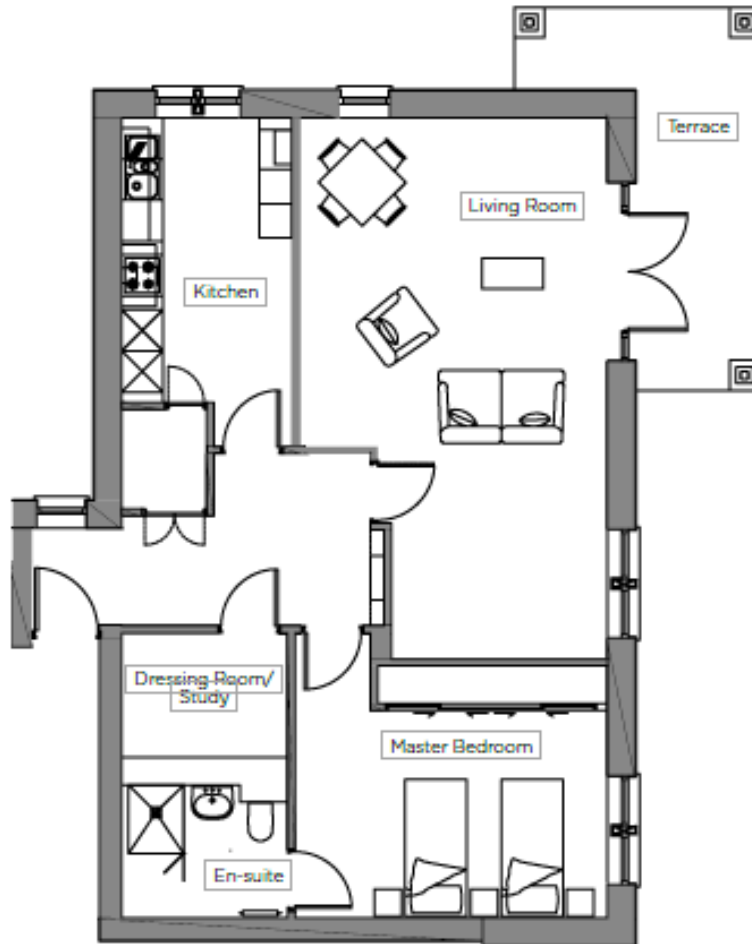


Audley Chalfont Dene

6 Milton Place
Ground floor resale apartment



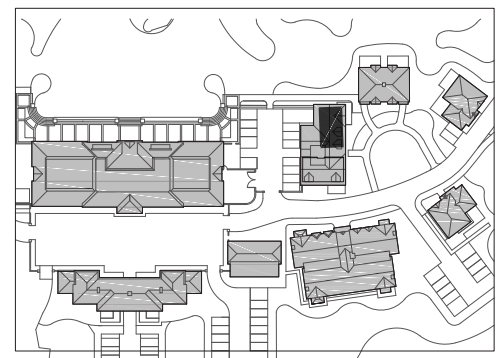
Internal Measurements

	Metric	Imperial
Living/Dining Room	7.51m x 4.80m	24' 6" x 15' 9"
Kitchen	4.15m x 2.53m	13' 7" x 8' 4"
Master Bedroom	4.56m x 3.03m	14' 12" x 9' 11"
Dressing room/study	2.4m x 1.7m	7' 9" x 5' 6"

Apartment 890 sq ft
Apartment 82 sq m

Audley Chalfont Dene

Rickmansworth Lane, Chalfont St Peter SL9 0LX
01494 876173 chalfontsales@audleyvillages.co.uk
www.audleyvillages.co.uk



Built-in wardrobes in bedrooms have not been included in the overall dimensions. Maximum measurements shown. These pages are intended for marketing purposes only. Designs vary according to plot and all details should be checked at the Sales Office. April 2018



Audley Chalfont Dene

6 Milton Place
Ground floor resale apartment



1 bedroom ground floor apartment

A one bedroom ground floor apartment (could be reinstated to two bedrooms) set within the Milton Place area of Chalfont Dene retirement village. This property has a large lounge with doors opening to a terrace.

Property specifications:

- Fully fitted separate SieMatic kitchen with gloss finished cupboards and Corian worktops; integral appliances included
- Extended living room with double doors onto south facing wrap-around terrace
- Master bedroom with en-suite shower room
- Dressing room/study
- Hallway storage



Price £610,000 (other fees apply)

Viewings by appointment with the sales office

Audley Chalfont Dene
Rickmansworth Lane, Chalfont St Peter SL9 0LX
01494 876173 chalfontsales@audleyvillages.co.uk
www.audleyvillages.co.uk

