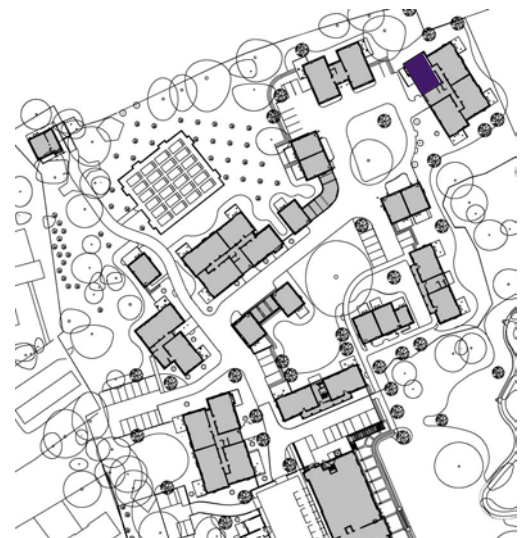
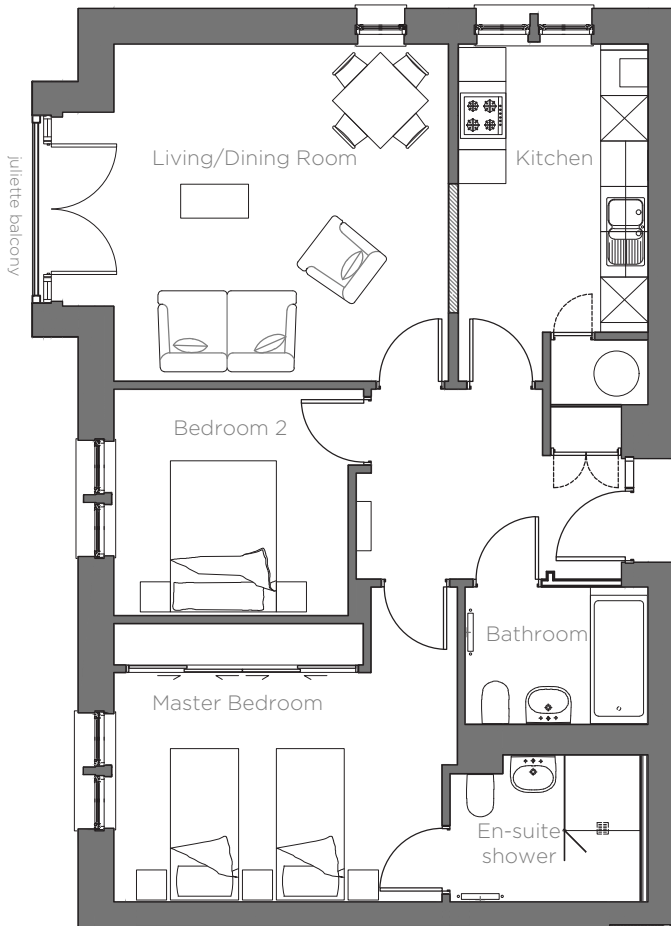


# Audley Chalfont Dene

11 Drury Close  
First floor apartment



Internal Measurements	Metric	Imperial
Living/Dining Room	4.46m x 4.43m	14'8" x 14'6"
Kitchen	3.81m x 2.50m	12'6" x 8'2"
Master Bedroom	4.35m x 3.03m	14'3" x 9'11"
Bedroom 2 Apartment	3.11m x 3.00m	10'2" x 9'10"

Sqft 873

Audley Chalfont Dene  
Rickmansworth Lane, Chalfont St Peter SL9 0LX  
01494 876173 chalfontsales@audleyvillages.co.uk  
www.audleyvillages.co.uk

Built-in wardrobes in bedrooms have not been included in the overall dimensions. Maximum measurements shown. These pages are intended for marketing purposes only. Designs vary according to plot and all details should be checked at the Sales Office. January 2017



# Audley Chalfont Dene

11 Drury Close  
First floor apartment



## 1 bed first floor apartment

A two bedroom first floor apartment set within the Drury Close area of Chalfont Dene retirement village. This property has a large lounge with doors opening to Juliette balcony.

Property specifications:

- Fully fitted separate SieMatic kitchen with gloss finished cupboards and Corian worktops
- Master bedroom with en-suite shower room and fitted wardrobes
- Second bedroom and guest bathroom
- Hallway storage space

**Price £575,000** (other fees apply)

Viewings by appointment with the sales office

Audley Chalfont Dene  
Rickmansworth Lane, Chalfont St Peter SL9 0LX  
01494 876173 [chalfontsales@audleyvillages.co.uk](mailto:chalfontsales@audleyvillages.co.uk)  
[www.audleyvillages.co.uk](http://www.audleyvillages.co.uk)

