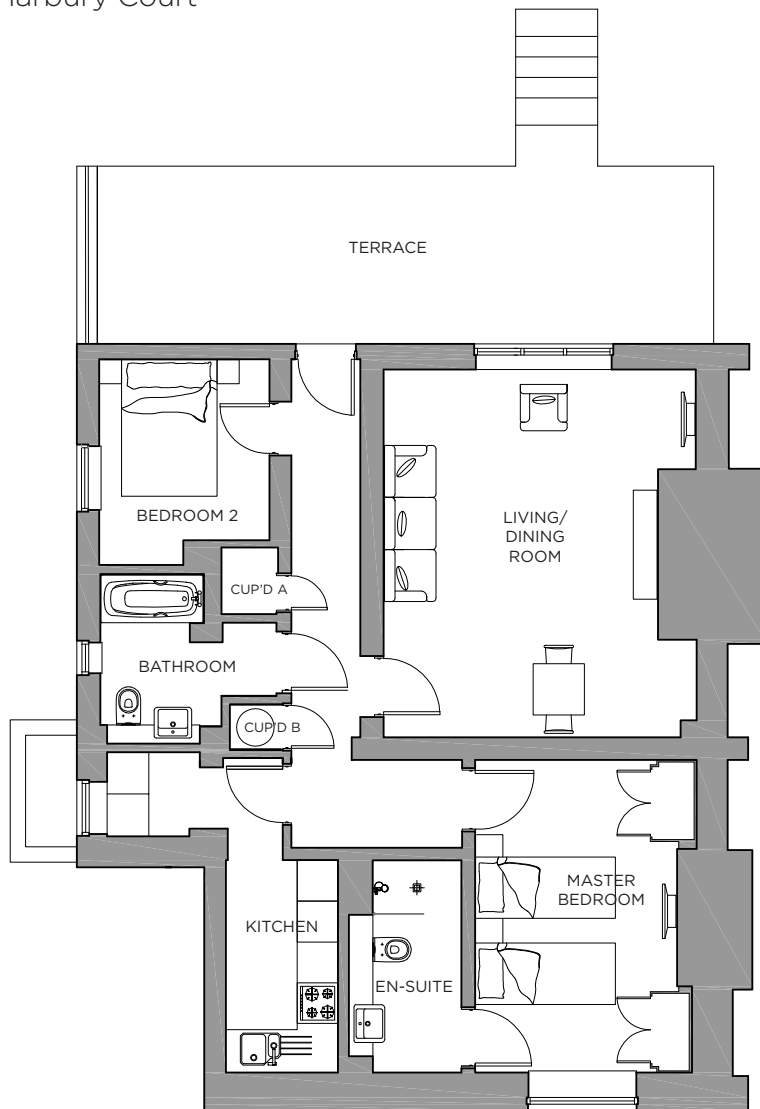


# Audley Binswood

Ground Floor Apartment  
2 Harbury Court

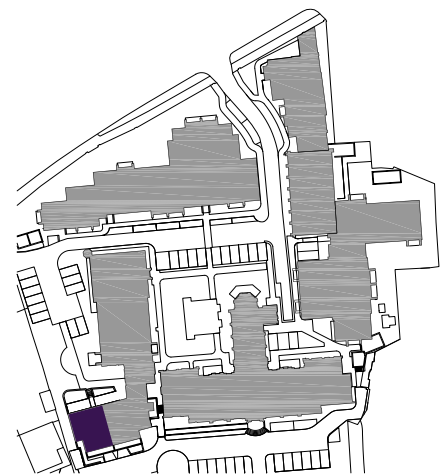


## Internal Measurements

	Metric (m)	Imperial (ft)
Living/Dining Room	5.39 x 4.00	17.68 x 13.12
Kitchen	3.11 x 1.64	10.20 x 5.38
Master Bedroom	4.58 x 2.96	15.03 x 9.71
Bedroom 2	3.01 x 2.50	9.88 x 8.20

Audley Binswood  
Binswood Avenue, Leamington Spa, CV32 5SE  
01926 339484  
[www.audleyretirement.co.uk](http://www.audleyretirement.co.uk)

Maximum measurements shown. These pages are intended for marketing purposes only. Designs vary according to plot and all details should be checked at the Sales Office. September 2017



GOOD MOVE