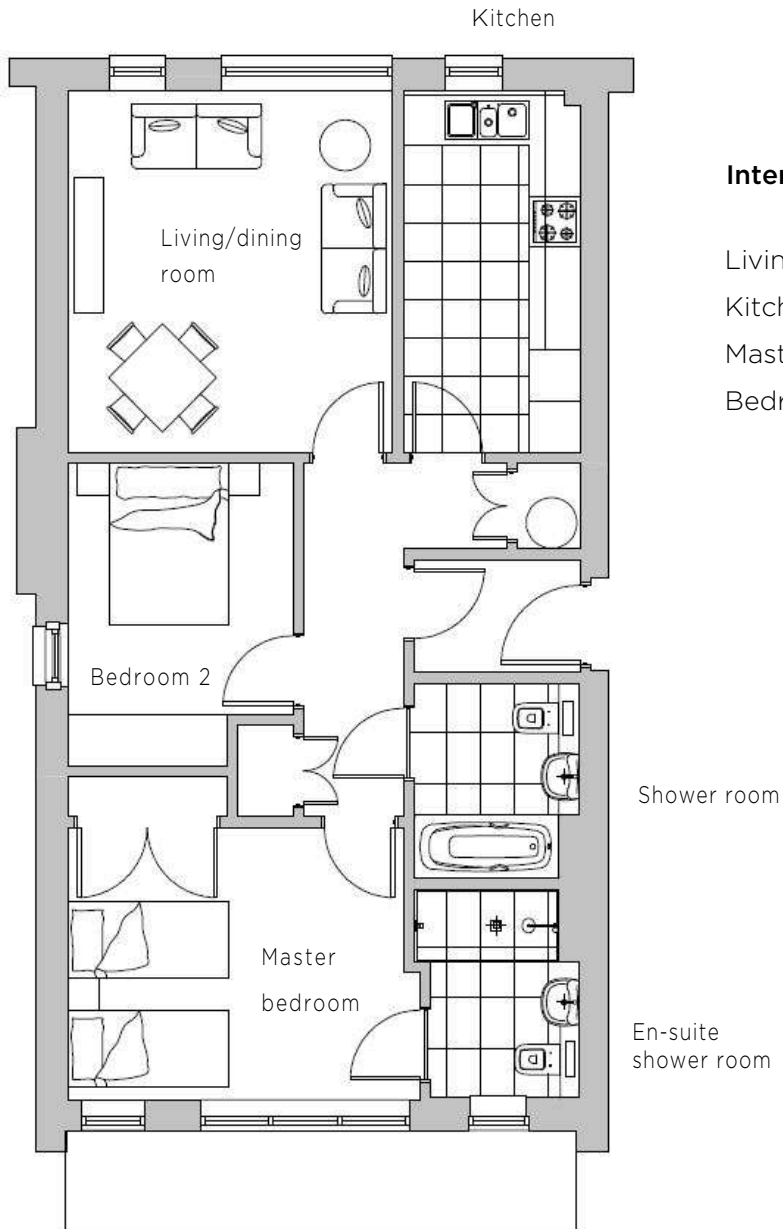
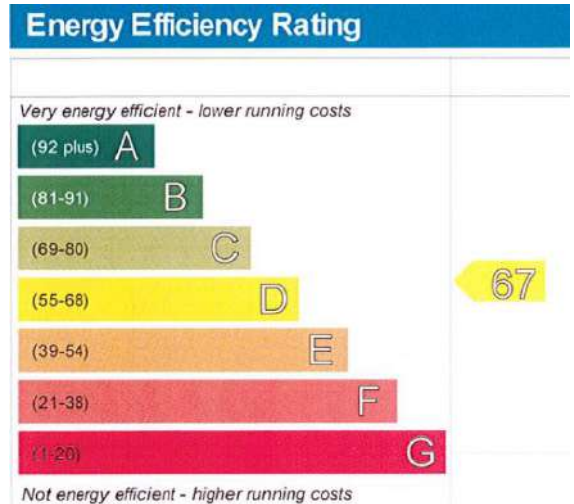


# Audley Binswood

2 Binswood Hall  
Ground Floor Pre Owned Apartment



Internal Measurements	Metric (m)	Imperial (ft)
Living/dining room	4.25 x 3.80	13'11" x 12'5"
Kitchen	4.25 x 2.05	13'11" x 6'8"
Master bedroom	3.80 x 4.15	12'5" x 13'7"
Bedroom 2	3.55 x 2.65	11'7" x 8'8"



Audley Binswood  
Binswood Hall, Binswood Avenue, Leamington Spa CV32 5SF  
01784 457 615 binswoodsales@audleyvillages.co.uk  
www.audleyvillages.co.uk

Built-in wardrobes in bedrooms have not been included in the overall dimensions.  
Maximum measurements shown. These pages are intended for marketing purposes only.  
Designs vary according to plot and all details should be checked at the Sales Office.  
December 2017



# Audley Binswood

2 Binswood Hall  
Ground Floor Pre Owned Apartment



## 2 bed ground floor apartment

This two bedroom apartment overlooking gardens is located on the ground floor of Binswood Hall, a Grade II\* listed Victorian building and home to the Audley Club with its own luxury health club, swimming pool and Restaurant & Bistro. The apartment has been recently renovated and the master bedroom benefits from fitted wardrobes and an en-suite.



Property specifications:

- Master bedroom with fitted wardrobes and en-suite shower room
- Second bedroom and additional shower room
- Fully fitted SieMatic kitchen with Neff/Bosch appliances
- Large original feature windows, plus luxury blinds and light fittings
- Newly painted and new carpets throughout
- Location provides easy access to the Audley Club



**Guide price £400,000** (other fees apply)

Viewings by appointment with the sales office

Audley Binswood  
Binswood Hall, Binswood Avenue, Leamington Spa CV32 5SF  
01784 457 615 [binswoodsales@audleyvillages.co.uk](mailto:binswoodsales@audleyvillages.co.uk)  
[www.audleyvillages.co.uk](http://www.audleyvillages.co.uk)

