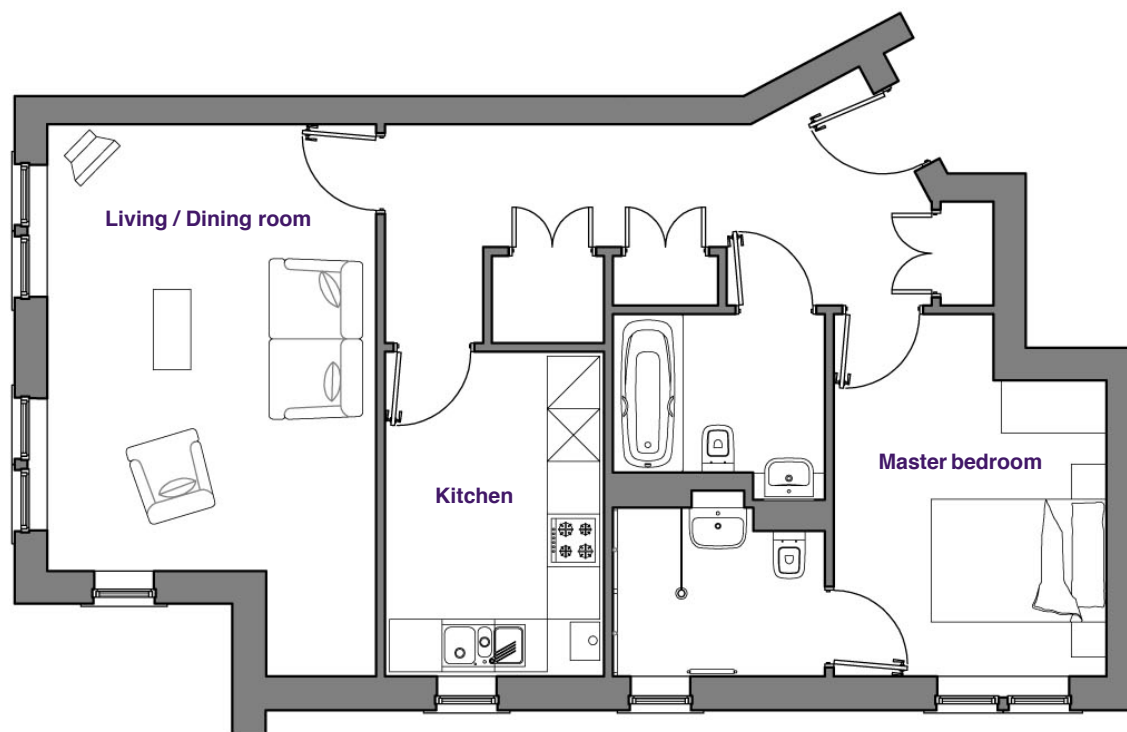


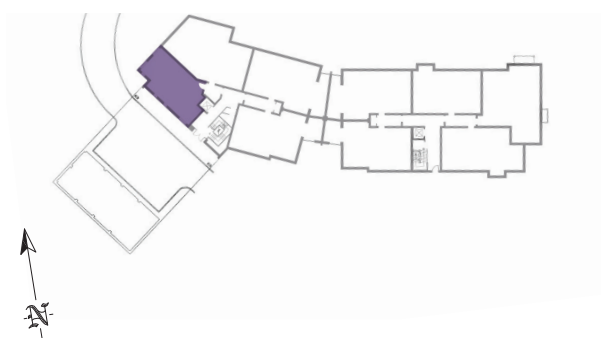
Audley Clevedon

Apartment 3, Padgett Court, Ground Floor



Internal Measurements

	Metric	Imperial
Kitchen:	3.65m x 2.46m	12' 0" x 8' 1"
Living / Dining room:	5.01m x 3.59m	16' 5" x 11' 9"
Master bedroom:	3.31m x 2.97m	10' 10" x 9' 9"



Audley Clevedon, Ben Rhydding Drive, Ben Rhydding, Ilkley LS29 8AQ

01943 601 964

www.audleyretirement.co.uk

Built-in wardrobes in bedrooms have not been included in the overall dimensions. En-suite bathrooms and dressing rooms, where applicable, have been ignored in dimensions. Maximum measurements shown. These pages are intended for marketing purposes only. Designs vary according to plot and all details should be checked at the Marketing Suite.

201205