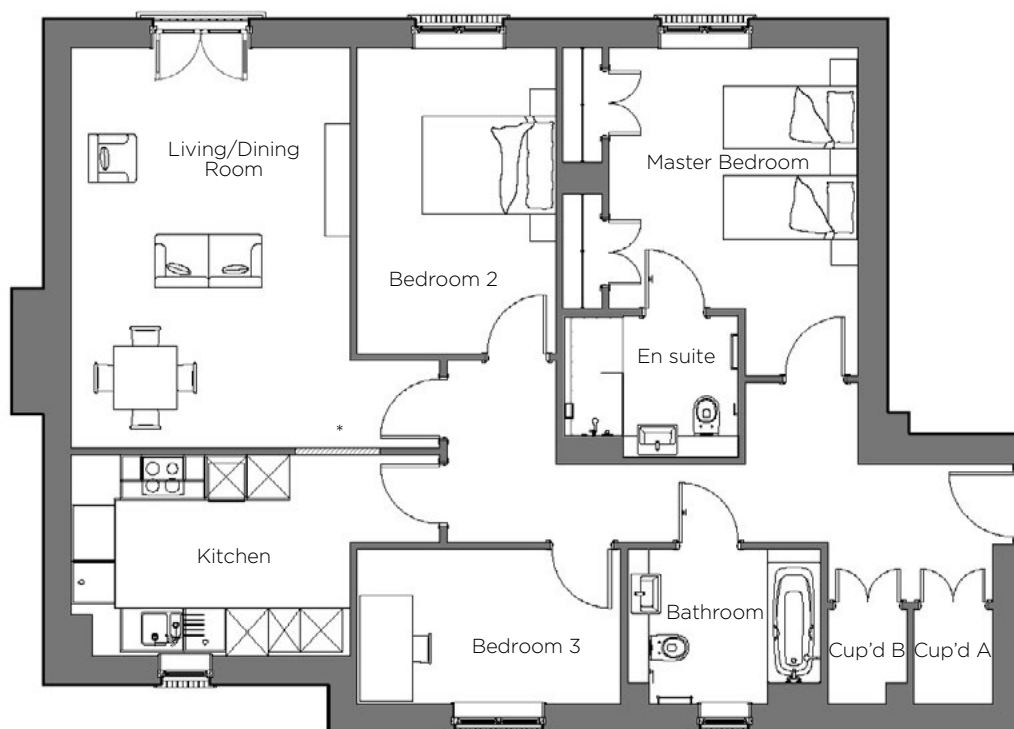


Audley Binswood

First Floor Apartment
Kenilworth Place, Plot 08



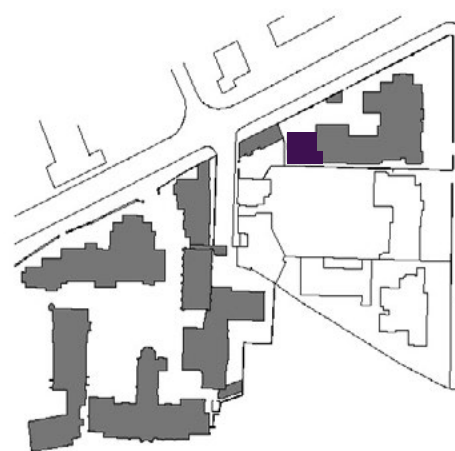
Internal Measurements

Metric (m)

Imperial (ft)

Living/Dining Room	5.68 x 3.95	18'64" x 12'96"
Kitchen	3.95 x 2.85	12'96" x 9'35"
Master Bedroom	3.71 x 3.53	12'17" x 11'58"
Bedroom 2	4.35 x 2.83	14'27" x 9'28"
Bedroom 3	3.75 x 2.19	12'30" x 7'19"

*Open plan option available



Audley Binswood
Binswood Avenue
Leamington Spa CV32 5SE
01926 339 484
www.audleyvillages.co.uk

Built-in wardrobes in bedrooms have not been included in the overall dimensions.
Maximum measurements shown. These pages are intended for marketing purposes only.
Designs vary according to plot and all details should be checked at the Sales Office.
March 2019

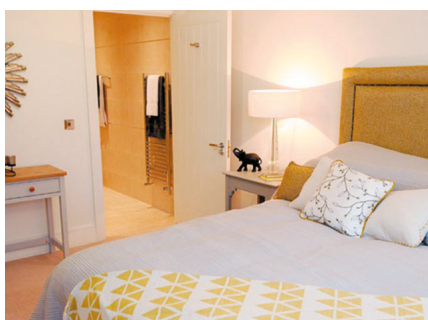


Audley Binswood

First Floor Apartment
Kenilworth Place, Plot 08



CGI for illustration purposes only



3 bedroom, first floor apartment

A spacious first floor apartment with three bedrooms. This elegant apartment has a light and airy feel and a master bedroom with double fitted wardrobes and en suite.

Property specifications:

- Master bedroom with double fitted wardrobes and en suite shower room
- Second double bedroom and additional third bedroom
- Spacious living room with dining space
- Beautiful SieMatic kitchen with Corian worktops
- Two storage cupboards in hallway
- Separate bathroom

Audley Binswood
Binswood Avenue
Leamington Spa CV32 5SE
01926 339 484
www.audleyvillages.co.uk



Photos for illustration purposes only