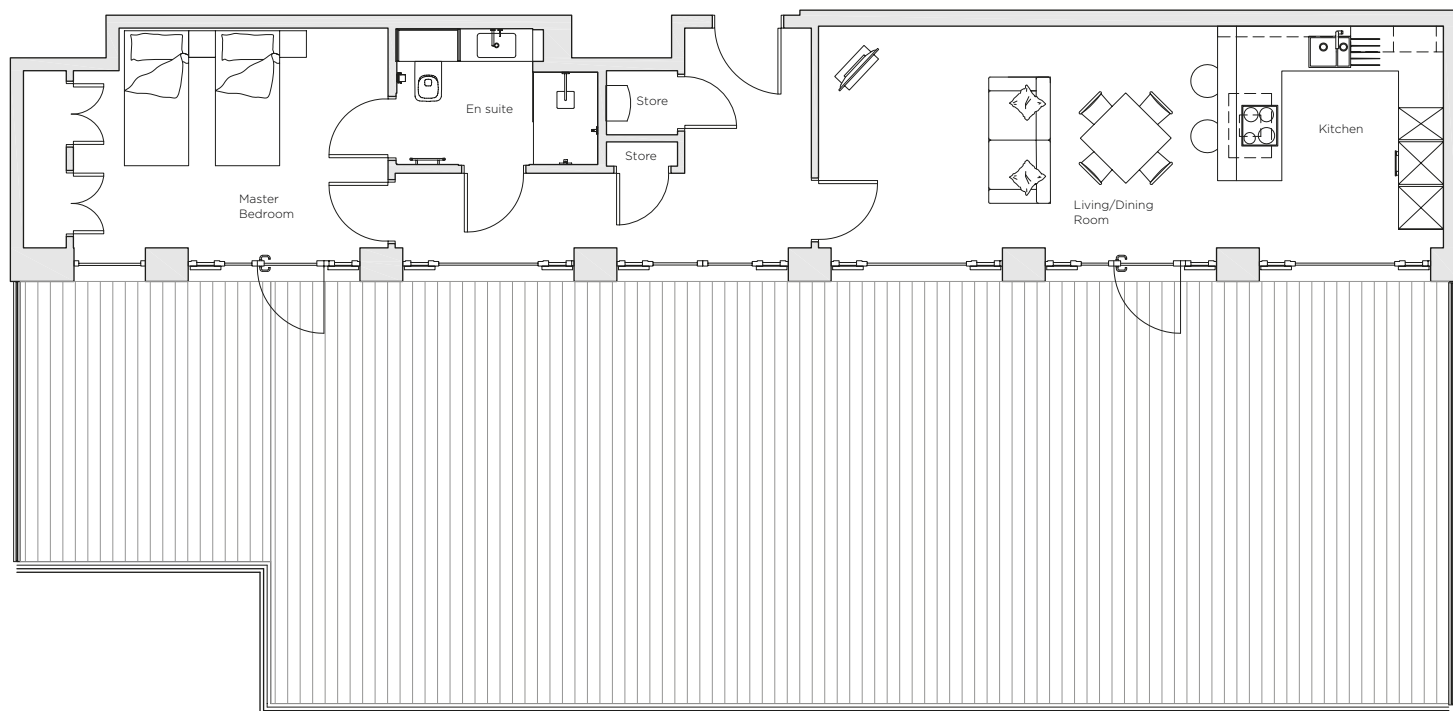


# Audley Nightingale Place

Plot 87, Fifth Floor



Internal Measurements	Metric (m)	Imperial (ft)
Living/Dining Room	3.10 x 5.60	10'2" x 18'4"
Kitchen	3.10 x 3.10	10'2" x 10'2"
Master Bedroom	3.10 x 3.80	10'2" x 12'6"
Roof Terrace	5.90 x 16.50	19'4" x 54'2"



Audley Nightingale Place  
3 Nightingale Lane,  
London  
SW4 9AH

020 3802 1580  
[www.audleyvillages.co.uk](http://www.audleyvillages.co.uk)

Drawings are preliminary and may be subject to change pending detailed design.  
Furniture for illustration purposes only. Built-in wardrobes in bedrooms have not been included in the overall dimensions. Dimensions indicate main area of room only. These pages are intended for marketing purposes only. Designs vary according to plot and all details should be checked at the Sales Office.  
April 2018



# Audley Nightingale Place

Fifth Floor Apartment  
Plot 87



## 1 bedroom fifth floor apartment

This ideal one bedroom, one bathroom apartment is located on the fifth floor and includes a beautiful wall of windows, providing access to over 1000 sq ft of private balcony.

Property specifications:

- Large private terrace accessed from the open plan kitchen/living/dining room and master bedroom
- Luxury SieMatic kitchen with integrated Miele appliances including dishwasher, fridge/freezer and oven
- Master bedroom with fitted wardrobe and en suite with walk-in shower and Villeroy & Boch sanitaryware
- Hallway Storage

Audley Nightingale Place  
3 Nightingale Lane, London SW4 9AH  
020 3802 1580  
[www.audleyvillages.co.uk](http://www.audleyvillages.co.uk)

