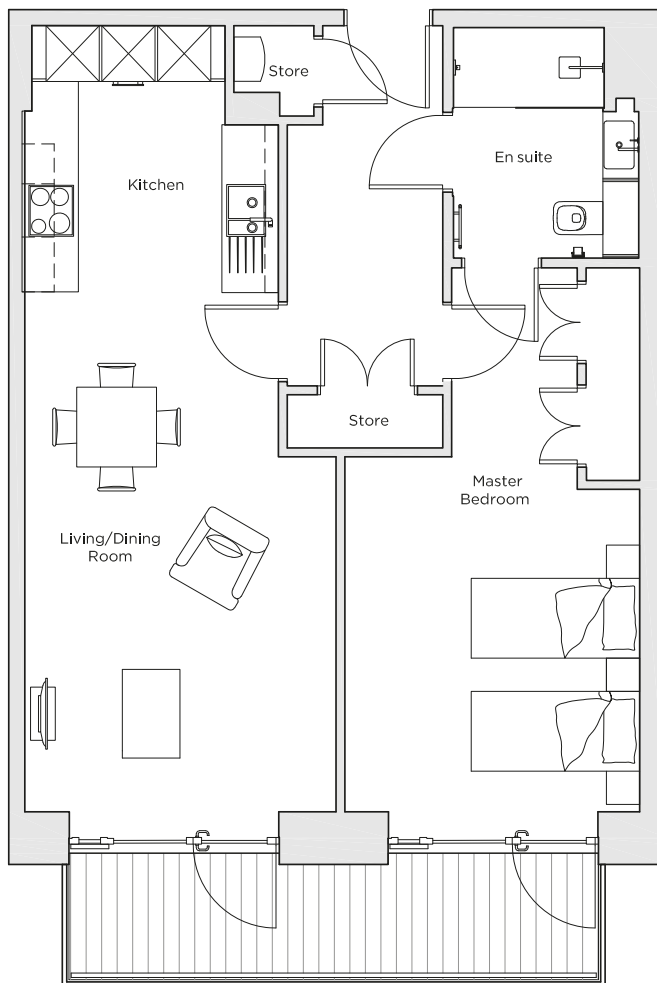


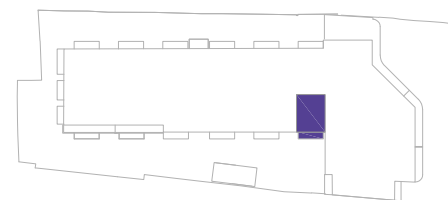
Audley Nightingale Place

Plot 76, Fourth Floor



Internal Measurements

	Metric (m)	Imperial (ft)
Living/Dining Room	5.8 x 3.5	19' 0" x 11' 6"
Kitchen	3.1 x 2.9	10' 2" x 9' 6"
Master Bedroom	4.0 x 3.3	13' 1" x 10' 10"
Balcony	1.2 x 6.0	3' 11" x 19' 8"



Audley Nightingale Place
3 Nightingale Lane,
London
SW4 9AH

020 3802 1580
www.audleyvillages.co.uk

Drawings are preliminary and may be subject to change pending detailed design.
Furniture for illustration purposes only. Built-in wardrobes in bedrooms have not been included in the overall dimensions. Dimensions indicate main area of room only. These pages are intended for marketing purposes only. Designs vary according to plot and all details should be checked at the Sales Office.
April 2018



Audley Nightingale Place

Fourth Floor Apartment
Plot 76



1 bedroom fourth floor apartment

One bedroom apartment with a private balcony. The bedroom is spacious with a large Jack and Jill en suite with beautiful Villeroy & Boch sanitaryware and walk-in shower.

Property specifications:

- Private balcony accessed from the bedroom and living/dining room
- The luxury SieMatic kitchen adjoins the living/dining room for an open-plan feel
- Master bedroom with double fitted wardrobe and en suite with walk-in shower and Villeroy & Boch sanitaryware
- Two hallway storage cupboards

Audley Nightingale Place
3 Nightingale Lane, London SW4 9AH
020 3802 1580
www.audleyvillages.co.uk

