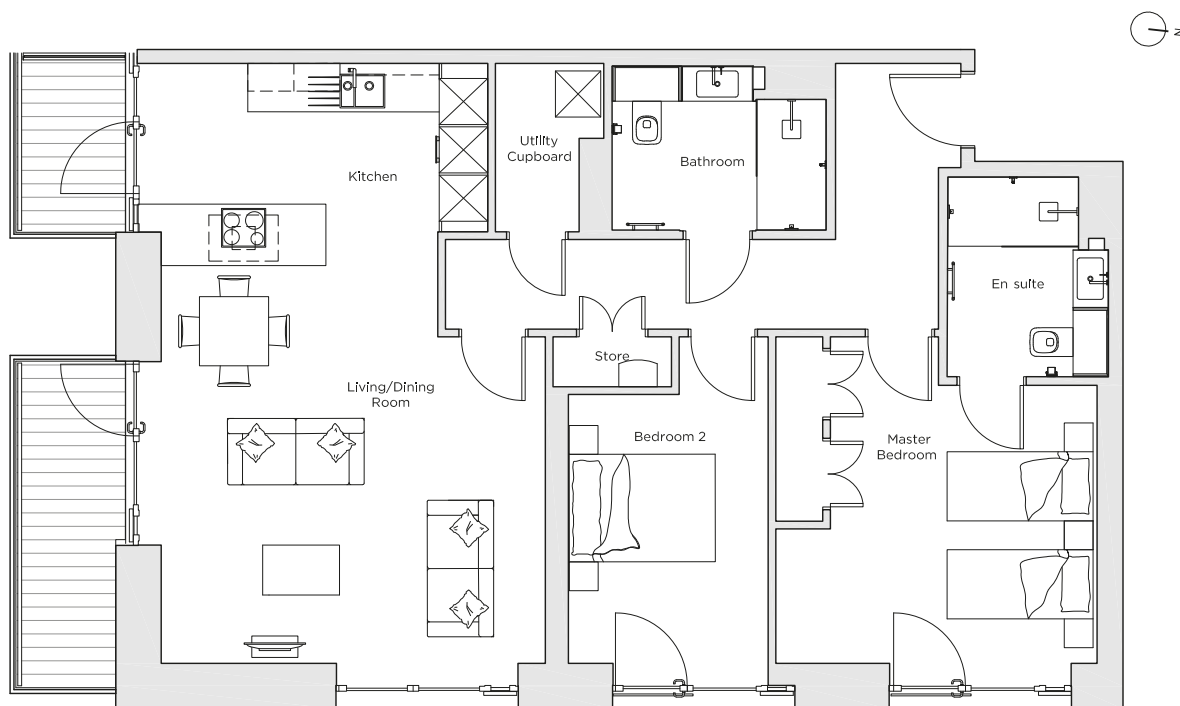
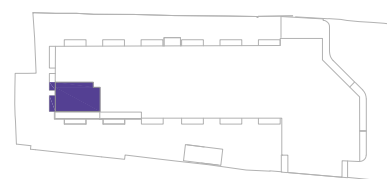


Audley Nightingale Place

Plot 71, Fourth Floor



Internal Measurements	Metric (m)	Imperial (ft)
Living/Dining Room	4.3 x 5.0	14' 1" x 16' 5"
Kitchen	2.2 x 4.3	7' 3" x 14' 1"
Master Bedroom	3.6 x 4.2	11' 10" x 13' 9"
Bedroom 2	3.5 x 2.6	11' 6" x 8' 6"
Balcony 1	2.3 x 1.2	7' 7" x 3' 11"
Balcony 2	4.3 x 1.2	14' 1" x 3' 11"



Audley Nightingale Place
3 Nightingale Lane,
London
SW4 9AH

020 3802 1580
www.audleyvillages.co.uk

Drawings are preliminary and may be subject to change pending detailed design.
Furniture for illustration purposes only. Built-in wardrobes in bedrooms have not been included in the overall dimensions. Dimensions indicate main area of room only. These pages are intended for marketing purposes only. Designs vary according to plot and all details should be checked at the Sales Office.
April 2018



Audley Nightingale Place

Fourth Floor Apartment
Plot 71



2 bedroom fourth floor apartment

Dual aspect, two bedroom, two bathroom apartment with two south-facing balconies, one of which is accessible from the kitchen. The master bedroom has a double fitted wardrobe and an en suite bathroom with a walk-in shower.

Property specifications:

- Dual aspect apartment with two south-facing balconies
- Master bedroom with built-in double wardrobes, Juliet balcony and en suite with walk-in shower and Villeroy & Boch sanitaryware
- Second bedroom with Juliet balcony
- Spacious open plan kitchen/living/dining room
- Beautiful SieMatic kitchen with integrated appliances
- Benefits from utility cupboard and hallway storage cupboard

Audley Nightingale Place
3 Nightingale Lane, London SW4 9AH
020 3802 1580
www.audleyvillages.co.uk

