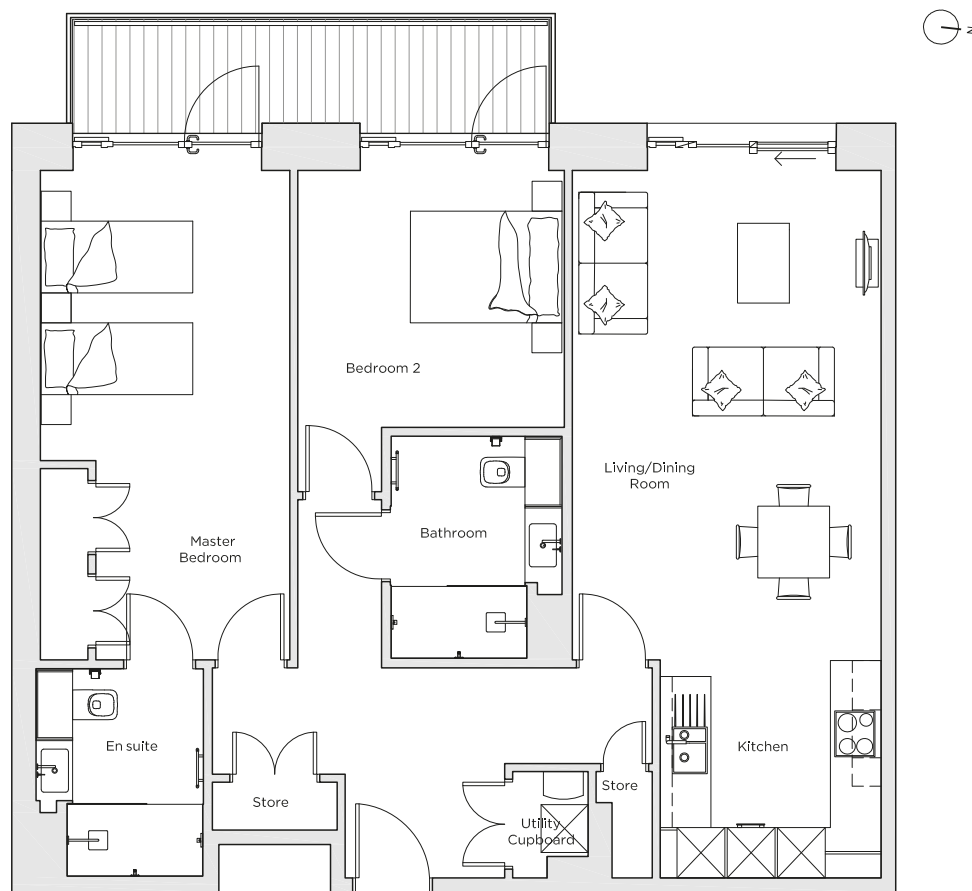


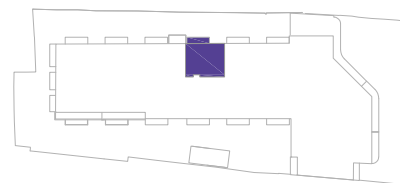
Audley Nightingale Place

Plot 67, Fourth Floor



Internal Measurements

	Metric (m)	Imperial (ft)
Living/Dining Room	6.1 x 3.9	20' 0" x 12' 10"
Kitchen	2.7 x 2.8	8' 10" x 9' 2"
Master Bedroom	6.1 x 3.1	20' 0" x 10' 2"
Bedroom 2	3.2 x 3.3	10' 6" x 10' 10"
Balcony	1.2 x 6.0	3' 11" x 19' 8"



Audley Nightingale Place
3 Nightingale Lane,
London
SW4 9AH

020 3802 1580
www.audleyvillages.co.uk

Drawings are preliminary and may be subject to change pending detailed design.
Furniture for illustration purposes only. Built-in wardrobes in bedrooms have not been included in the overall dimensions. Dimensions indicate main area of room only. These pages are intended for marketing purposes only. Designs vary according to plot and all details should be checked at the Sales Office.
April 2018



Audley Nightingale Place

Fourth Floor Apartment
Plot 67



2 bedroom fourth floor apartment

This home provides an open plan design with its own private balcony connecting the two bedrooms. The kitchen includes SieMatic finishes and a large dining space.

Property specifications:

- Spacious living room with dining space
- Storage cupboard and utility cupboard in hallway
- Master bedroom with double fitted wardrobes and en suite with walk-in shower and Villeroy & Boch sanitaryware
- Second double bedroom
- Luxury SieMatic kitchen with integrated Miele appliances including dishwasher, fridge/freezer and oven
- Separate bathroom
- Private balcony

Audley Nightingale Place
3 Nightingale Lane, London SW4 9AH
020 3802 1580
www.audleyvillages.co.uk

