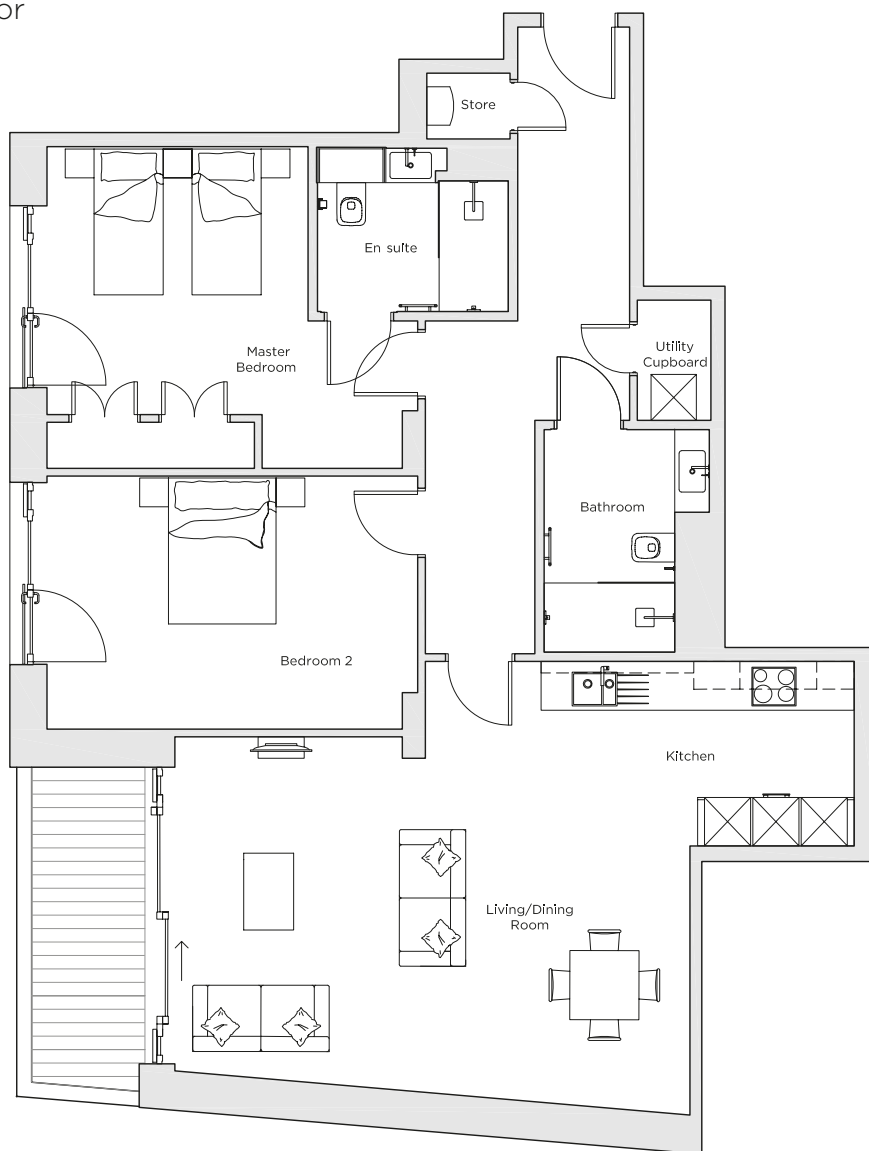
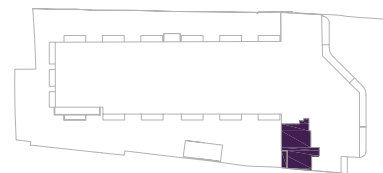


# Audley Nightingale Place

Plot 60, Third Floor



Internal Measurements	Metric (m)	Imperial (ft)
Living/Dining Room	4.00 x 6.70	13'1" x 22'0"
Kitchen	2.40 x 4.10	7'10" x 13'5"
Master Bedroom	3.50 x 3.40	11'6" x 11'2"
Bedroom 2	3.30 x 4.80	10'10" x 15'9"
Balcony	4.10 x 1.40	13'5" x 4'7"



Audley Nightingale Place  
3 Nightingale Lane,  
London  
SW4 9AH

020 3802 1580  
[www.audleyvillages.co.uk](http://www.audleyvillages.co.uk)

Drawings are preliminary and may be subject to change pending detailed design.  
Furniture for illustration purposes only. Built-in wardrobes in bedrooms have not been included in the overall dimensions. Dimensions indicate main area of room only. These pages are intended for marketing purposes only. Designs vary according to plot and all details should be checked at the Sales Office.  
April 2018



# Audley Nightingale Place

Third Floor Apartment  
Plot 60



## 2 bedroom third floor apartment

This superb two bedroom, two bathroom apartment has a south-facing private balcony that's joined to the open plan living/dining room. Both bedrooms also include Juliet balconies making the rooms beautifully bright. This apartment has a luxury finishing including a designer SieMatic kitchen with integrated Miele appliances including microwave and dishwasher.

Property specifications:

- Large south-facing private balcony accessed from the open plan kitchen/living/dining room
- Luxury SieMatic kitchen with integrated Miele appliances including dishwasher, fridge/freezer and oven
- Master bedroom with fitted wardrobe and en suite with walk-in shower and Villeroy & Boch sanitaryware
- Second double bedroom
- Second Villeroy & Boch bathroom
- Hallway storage

Audley Nightingale Place  
3 Nightingale Lane, London SW4 9AH  
020 3802 1580  
[www.audleyvillages.co.uk](http://www.audleyvillages.co.uk)

