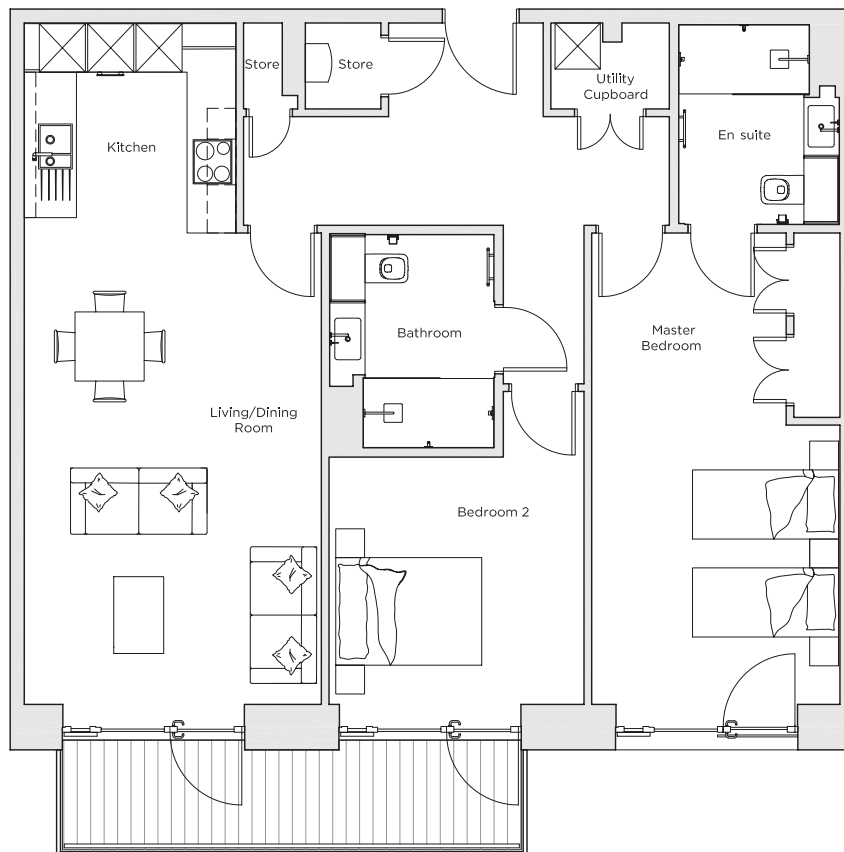
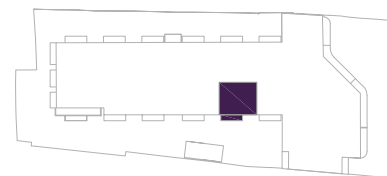


Audley Nightingale Place

Plot 58, Third Floor



Internal Measurements	Metric (m)	Imperial (ft)
Living/Dining Room	6.10 x 3.90	20'0" x 12'10"
Kitchen	2.70 x 2.80	8'10" x 9'2"
Master Bedroom	6.10 x 3.20	20'0" x 10'6"
Bedroom 2	3.20 x 3.30	10'6" x 10'10"
Balcony	1.20 x 6.00	3'11" x 19'8"



Audley Nightingale Place
3 Nightingale Lane,
London
SW4 9AH

020 3802 1580
www.audleyvillages.co.uk

Drawings are preliminary and may be subject to change pending detailed design.
Furniture for illustration purposes only. Built-in wardrobes in bedrooms have not been included in the overall dimensions. Dimensions indicate main area of room only. These pages are intended for marketing purposes only. Designs vary according to plot and all details should be checked at the Sales Office.
April 2018



Audley Nightingale Place

Third Floor Apartment
Plot 58



2 bedroom third floor apartment

This ideal two bedroom, two bathroom home features a SieMatic fitted kitchen and east-facing balcony that's adjoined to the living room and second bedroom.

Property specifications:

- Delightful living room and dining space
- Master bedroom with a double fitted wardrobe and en suite with walk-in shower and Villeroy & Boch sanitaryware
- Luxury SieMatic kitchen with integrated Miele appliances including dishwasher, fridge/freezer and oven
- Second double bedroom
- Separate second Villeroy & Boch bathroom
- East-facing private balcony

Audley Nightingale Place
3 Nightingale Lane, London SW4 9AH
020 3802 1580
www.audleyvillages.co.uk

