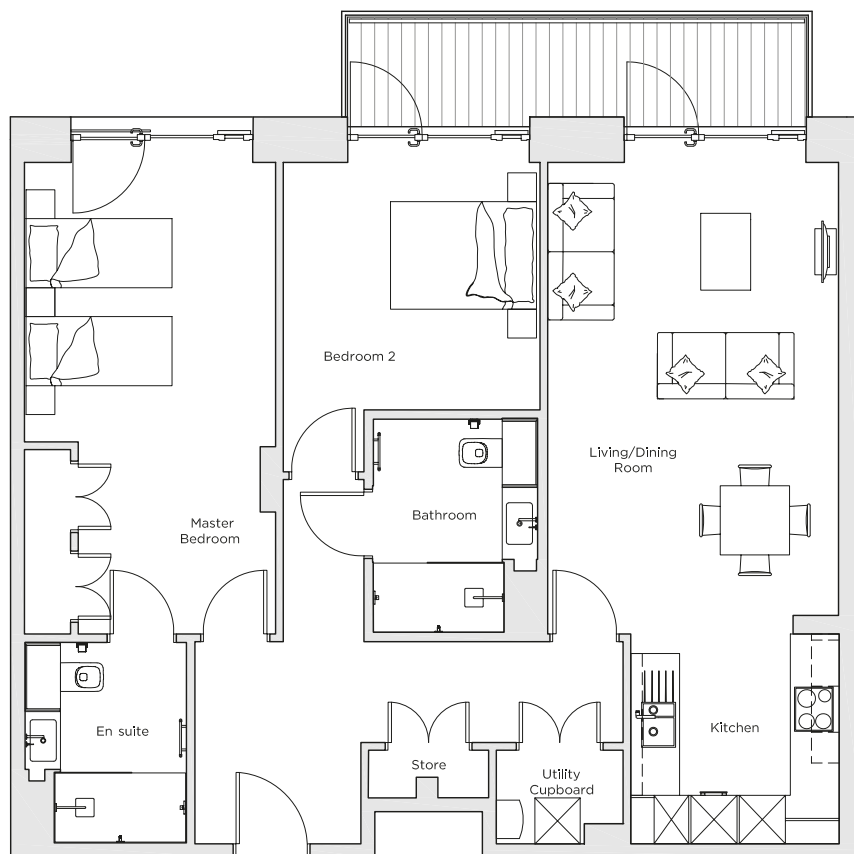
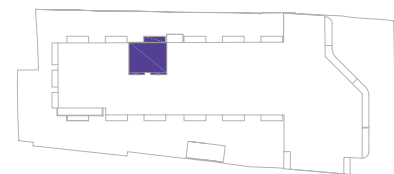


Audley Nightingale Place

Plot 51, Third Floor



Internal Measurements	Metric (m)	Imperial (ft)
Living/Dining Room	6.1 x 3.8	20' 0" x 12' 6"
Kitchen	2.7 x 2.7	8' 10" x 8' 10"
Master Bedroom	6.1 x 3.3	20' 0" x 10' 10"
Bedroom 2	3.2 x 3.3	10' 6" x 10' 10"
Balcony	1.2 x 6.0	3' 11" x 19' 8"



Audley Nightingale Place
3 Nightingale Lane,
London
SW4 9AH

020 3802 1580
www.audleyvillages.co.uk

Drawings are preliminary and may be subject to change pending detailed design.
Furniture for illustration purposes only. Built-in wardrobes in bedrooms have not been included in the overall dimensions. Dimensions indicate main area of room only. These pages are intended for marketing purposes only. Designs vary according to plot and all details should be checked at the Sales Office.
April 2018



Audley Nightingale Place

Third Floor Apartment
Plot 51



2 bedroom third floor apartment

This delightful two bedroom, two bathroom home has a west-facing outlook over landscaped grounds. The private balcony can be accessed from the living/dining room and bedroom. This apartment benefits from hallway storage.

Property specifications:

- Luxury SieMatic kitchen with integrated Miele appliances including dishwasher, fridge/freezer and oven
- Spacious living/dining room with access to private balcony
- Master bedroom with fitted wardrobe and en suite with walk-in shower and Villeroy & Boch sanitaryware
- Second double bedroom
- Good sized second Villeroy & Boch bathroom
- Benefits from hallway storage

Audley Nightingale Place
3 Nightingale Lane, London SW4 9AH
020 3802 1580
www.audleyvillages.co.uk

