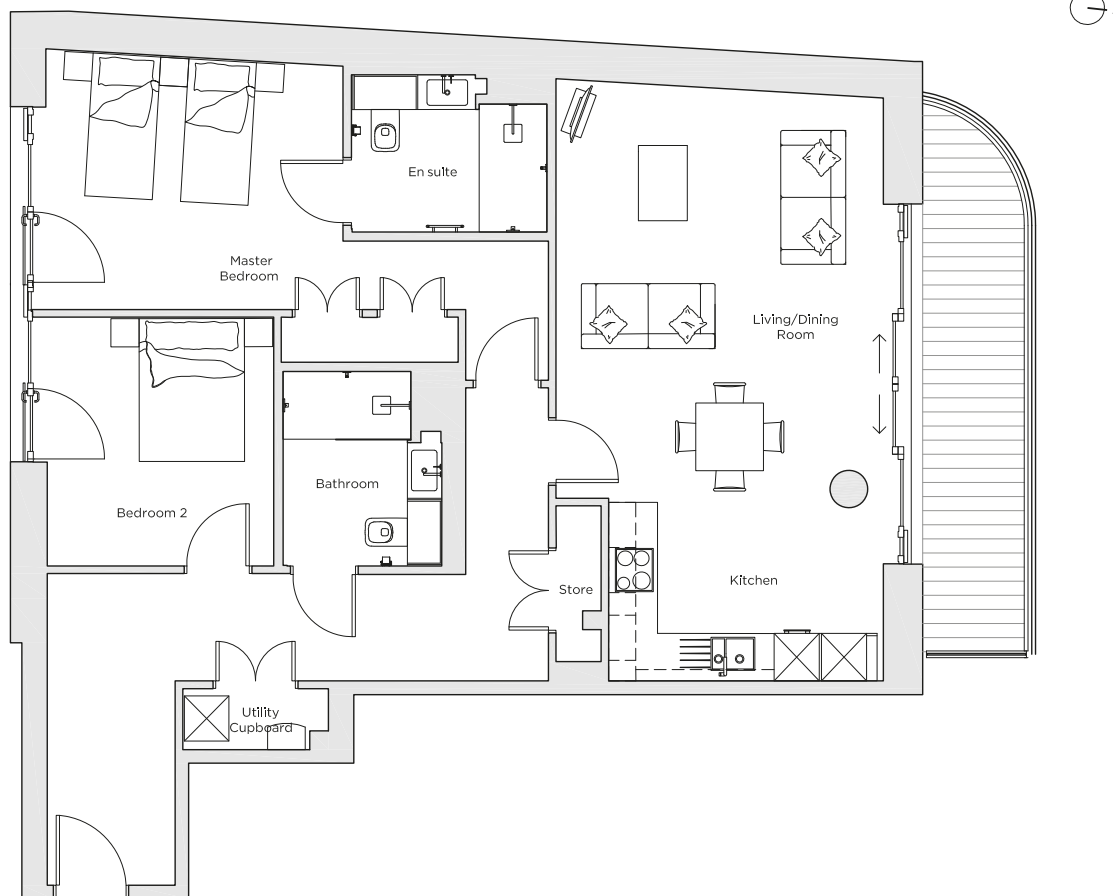


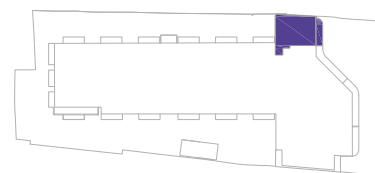
Audley Nightingale Place

Plot 47, Second Floor



Internal Measurements

	Metric (m)	Imperial (ft)
Living/Dining Room	5.6 x 4.4	18' 4" x 14' 5"
Kitchen	2.4 x 3.7	7' 10" x 12' 2"
Master Bedroom	3.5 x 3.9	11' 6" x 12' 10"
Bedroom 2	3.0 x 3.3	9' 10" x 10' 10"
Balcony	6.2 x 1.5	20' 4" x 4' 11"



Audley Nightingale Place
3 Nightingale Lane,
London
SW4 9AH

020 3802 1580
www.audleyvillages.co.uk

Drawings are preliminary and may be subject to change pending detailed design.
Furniture for illustration purposes only. Built-in wardrobes in bedrooms have not been included in the overall dimensions. Dimensions indicate main area of room only. These pages are intended for marketing purposes only. Designs vary according to plot and all details should be checked at the Sales Office.
April 2018



Audley Nightingale Place

Second Floor Apartment
Plot 47



2 bedroom second floor apartment

Beautifully designed dual aspect two bedroom, two bathroom apartment with views over the common and south-facing bedrooms. The master bedroom includes double fitted wardrobe and an en suite bathroom with a walk-in shower.

Property specifications:

- Spacious private balcony with views of Clapham Common, accessed from the living/dining room
- Luxury SieMatic kitchen with integrated Miele appliances including dishwasher, fridge/freezer and oven
- Master bedroom with fitted wardrobe and en suite with walk-in shower and Villeroy & Boch sanitaryware
- Master bedroom and second bedroom include Juliet balconies making the rooms beautifully bright
- Hallway storage

Audley Nightingale Place
3 Nightingale Lane, London SW4 9AH
020 3802 1580
www.audleyvillages.co.uk

