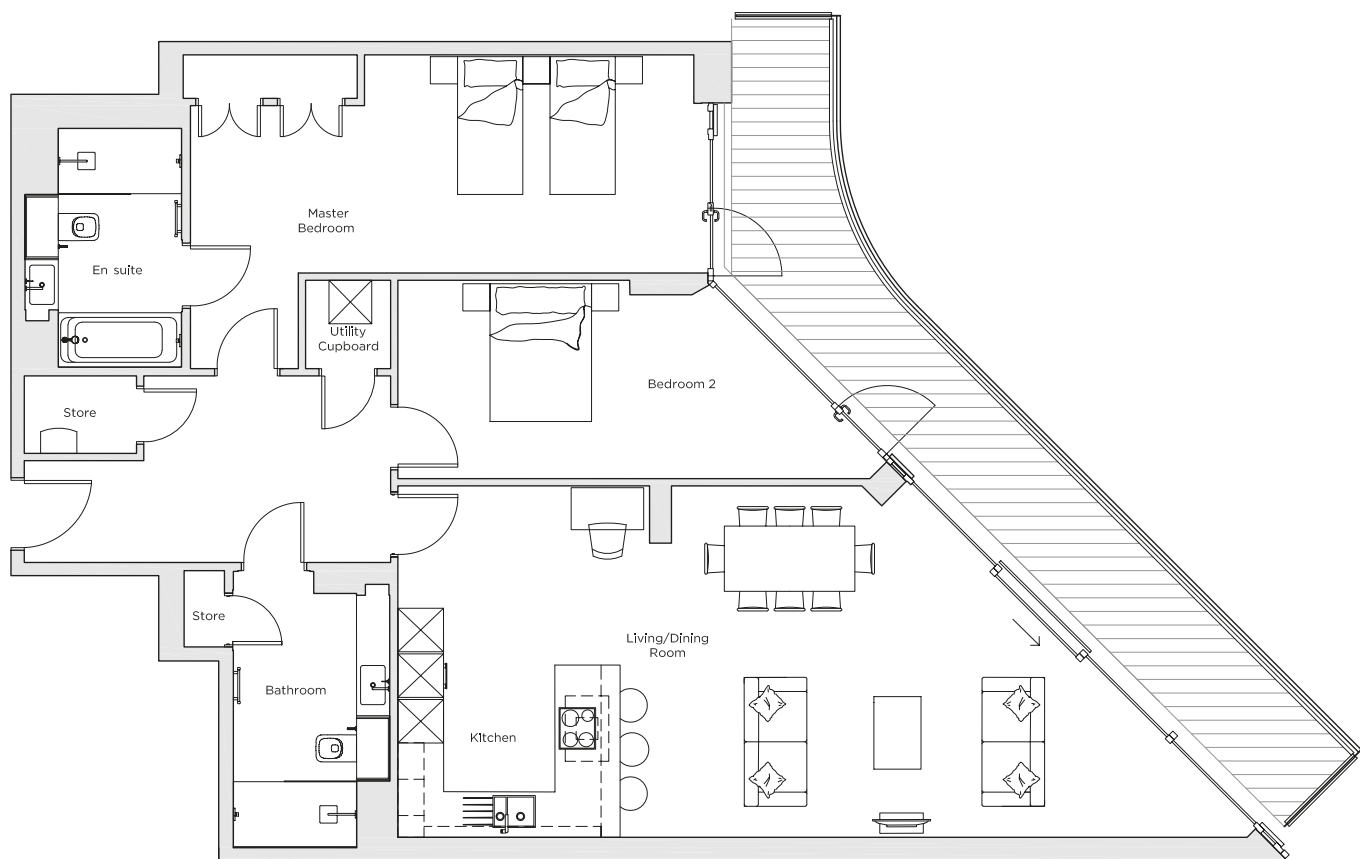
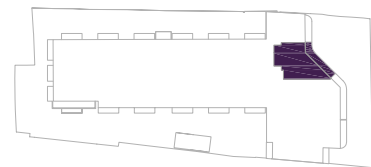


Audley Nightingale Place

Plot 46, Second Floor



Internal Measurements	Metric (m)	Imperial (ft)
Living/Dining Room	4.80 x 7.80	15'9" x 25'7"
Kitchen	3.20 x 3.50	10'6" x 11'6"
Master Bedroom	3.00 x 6.90	9'10" x 22'8"
Bedroom 2	2.70 x 6.50	8'10" x 21'4"
Balcony	13.30 x 1.50	43'8" x 4'11"



Audley Nightingale Place
3 Nightingale Lane,
London
SW4 9AH

020 3802 1580
www.audleyvillages.co.uk

Drawings are preliminary and may be subject to change pending detailed design.
Furniture for illustration purposes only. Built-in wardrobes in bedrooms have not been included in the overall dimensions. Dimensions indicate main area of room only. These pages are intended for marketing purposes only. Designs vary according to plot and all details should be checked at the Sales Office.
April 2018



Audley Nightingale Place

Second Floor Apartment
Plot 46



2 bedroom second floor apartment

Spectacular two bedroom, two bathroom apartment overlooking Clapham Common. The balcony extends the full width of the apartment with floor to ceiling windows. The open plan living/dining room has an adjoining luxury SieMatic kitchen. Both bedrooms are spacious, and the en suite and bathroom are fitted with Villeroy & Boch sanitaryware.

Property specifications:

- Stunning full width private balcony accessed from the open plan kitchen/living/dining room
- Luxury SieMatic kitchen with integrated Miele appliances including dishwasher, fridge/freezer and oven
- Master bedroom with a double fitted wardrobe and en suite with walk-in shower and Villeroy & Boch sanitaryware
- Second double bedroom
- Second Villeroy & Boch bathroom with walk-in shower
- Views of Clapham Common



Audley Nightingale Place
3 Nightingale Lane, London SW4 9AH
020 3802 1580
www.audleyvillages.co.uk

