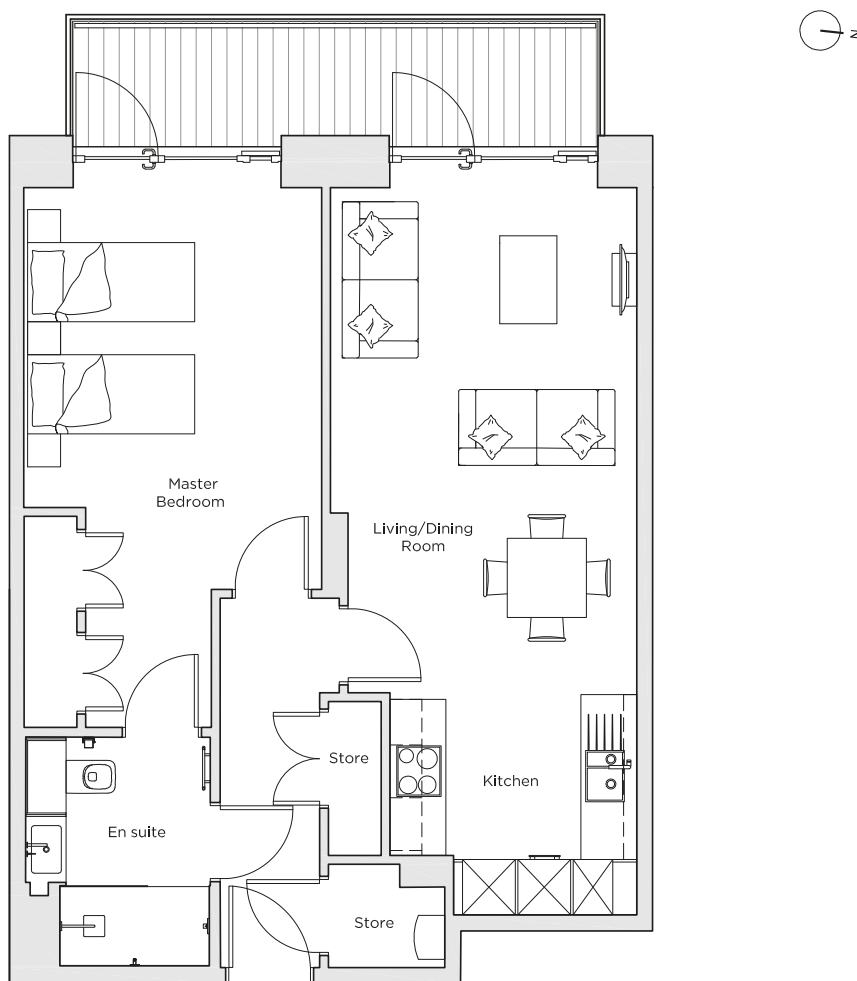
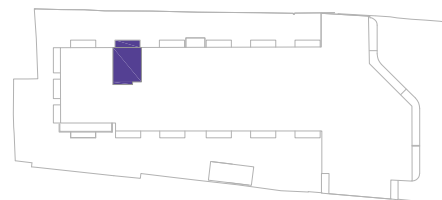


# Audley Nightingale Place

Plot 35, Second Floor



Internal Measurements	Metric (m)	Imperial (ft)
Living/Dining Room	5.7 x 3.5	18' 8" x 11' 6"
Kitchen	2.5 x 2.8	8' 2" x 9' 2"
Master Bedroom	4.6 x 3.4	15' 1" x 11' 2"
Balcony	1.2 x 6.0	3' 11" x 19' 8"



Audley Nightingale Place  
3 Nightingale Lane,  
London  
SW4 9AH

020 3802 1580  
[www.audleyvillages.co.uk](http://www.audleyvillages.co.uk)

Drawings are preliminary and may be subject to change pending detailed design.  
Furniture for illustration purposes only. Built-in wardrobes in bedrooms have not been included in the overall dimensions. Dimensions indicate main area of room only. These pages are intended for marketing purposes only. Designs vary according to plot and all details should be checked at the Sales Office.  
April 2018



# Audley Nightingale Place

Second Floor Apartment  
Plot 35



## 1 bedroom second floor apartment

This beautifully designed one bedroom apartment has a quality finish and two storage cupboards. The open plan kitchen/living room has access to a full width enclosed balcony overlooking landscaped gardens.

Property specifications:

- Private balcony
- Spacious open plan living/dining room
- Master bedroom with fitted wardrobe and en suite with walk-in shower and Villeroy & Boch sanitaryware
- Luxury SieMatic kitchen with integrated Miele appliances including dishwasher, fridge/freezer and oven

Audley Nightingale Place  
3 Nightingale Lane, London SW4 9AH  
020 3802 1580  
[www.audleyvillages.co.uk](http://www.audleyvillages.co.uk)

