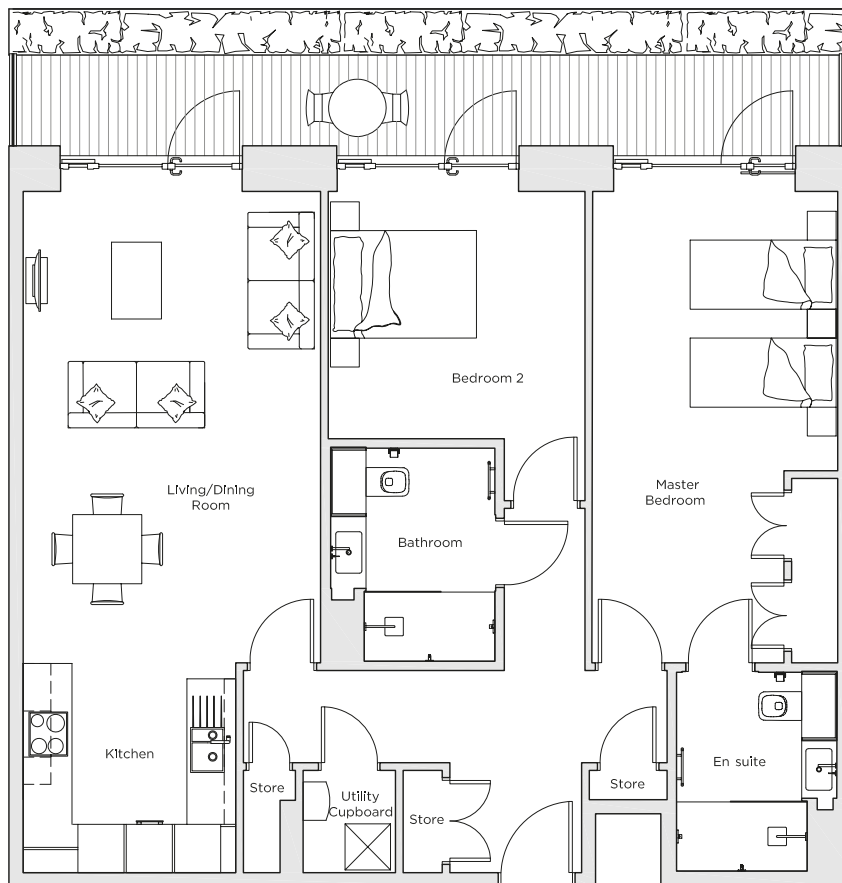
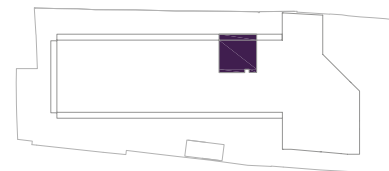


Audley Nightingale Place

Plot 2, Ground Floor



Internal Measurements	Metric (m)	Imperial (ft)
Living/Dining Room	6.10 x 3.90	20'0" x 12'10"
Kitchen	2.70 x 2.80	8'10" x 9'2"
Master Bedroom	6.10 x 3.20	20'0" x 10'6"
Bedroom 2	3.20 x 3.30	10'6" x 10'10"
Terrace	1.20 x 10.80	3'11" x 35'5"



Audley Nightingale Place
3 Nightingale Lane,
London
SW4 9AH

020 3802 1580
www.audleyvillages.co.uk

Drawings are preliminary and may be subject to change pending detailed design.
Furniture for illustration purposes only. Built-in wardrobes in bedrooms have not been included in the overall dimensions. Dimensions indicate main area of room only. These pages are intended for marketing purposes only. Designs vary according to plot and all details should be checked at the Sales Office.
April 2018



Audley Nightingale Place

Ground Floor Apartment
Plot 2



2 bedroom ground floor apartment

This ground floor, two bedroom apartment includes an en suite bathroom and a second guest bathroom both with walk-in showers. Both bedrooms and the living/dining room have access to the full width enclosed terrace that overlooks beautiful landscaped gardens.

Property specifications:

- Large private terrace accessed from the open plan kitchen/living/dining room
- Luxury SieMatic kitchen with integrated Miele appliances including dishwasher, fridge/freezer and oven
- Master bedroom with fitted wardrobe and en suite with walk-in shower and Villeroy & Boch sanitaryware
- Second double bedroom
- Second Villeroy & Boch bathroom
- Hallway storage

Audley Nightingale Place
3 Nightingale Lane, London SW4 9AH
020 3802 1580
www.audleyvillages.co.uk

