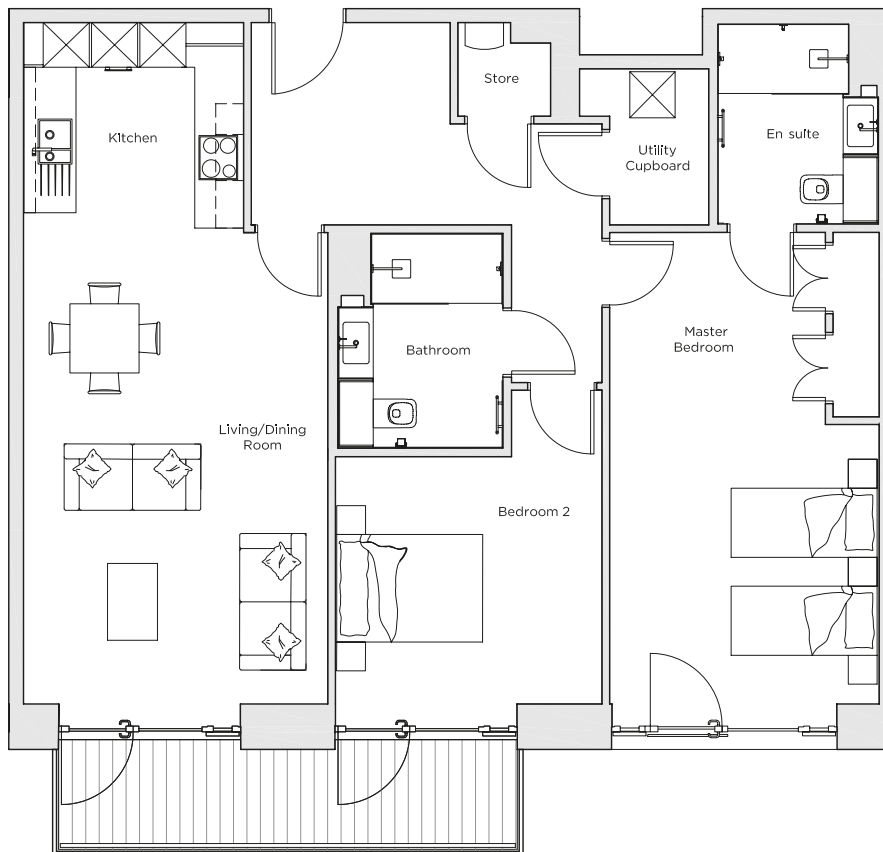
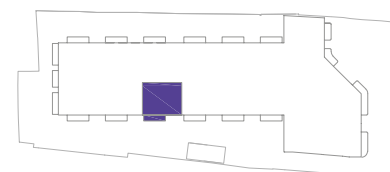


Audley Nightingale Place

Plot 22, First Floor



Internal Measurements	Metric (m)	Imperial (ft)
Living/Dining Room	6.1 x 4.0	20' 0" x 13' 1"
Kitchen	2.7 x 2.9	8' 10" x 9' 6"
Master Bedroom	6.1 x 3.5	20' 0" x 11' 6"
Bedroom 2	3.2 x 3.5	10' 6" x 11' 6"
Balcony	1.2 x 6.0	3' 11" x 19' 8"



Audley Nightingale Place
3 Nightingale Lane,
London
SW4 9AH

020 3802 1580
www.audleyvillages.co.uk

Drawings are preliminary and may be subject to change pending detailed design.
Furniture for illustration purposes only. Built-in wardrobes in bedrooms have not been included in the overall dimensions. Dimensions indicate main area of room only. These pages are intended for marketing purposes only. Designs vary according to plot and all details should be checked at the Sales Office.
April 2018



Audley Nightingale Place

First Floor Apartment
Plot 22



2 bedroom first floor apartment

Spacious two bedroom, two bathroom home with a designer open plan kitchen with integrated appliances including washer/dryer, microwave and dishwasher. The private balcony is accessed from both living/dining room and bedroom.

Property specifications:

- Large private balcony accessed from the open plan kitchen/living/dining room and bedroom
- Luxury SieMatic kitchen with integrated Miele appliances including dishwasher, fridge/freezer and oven
- Master bedroom with fitted wardrobe and en suite with walk-in shower and Villeroy & Boch sanitaryware
- Second double bedroom
- Second Villeroy & Boch bathroom with walk-in shower
- Hallway storage and utility cupboard

Audley Nightingale Place
3 Nightingale Lane, London SW4 9AH
020 3802 1580
www.audleyvillages.co.uk

