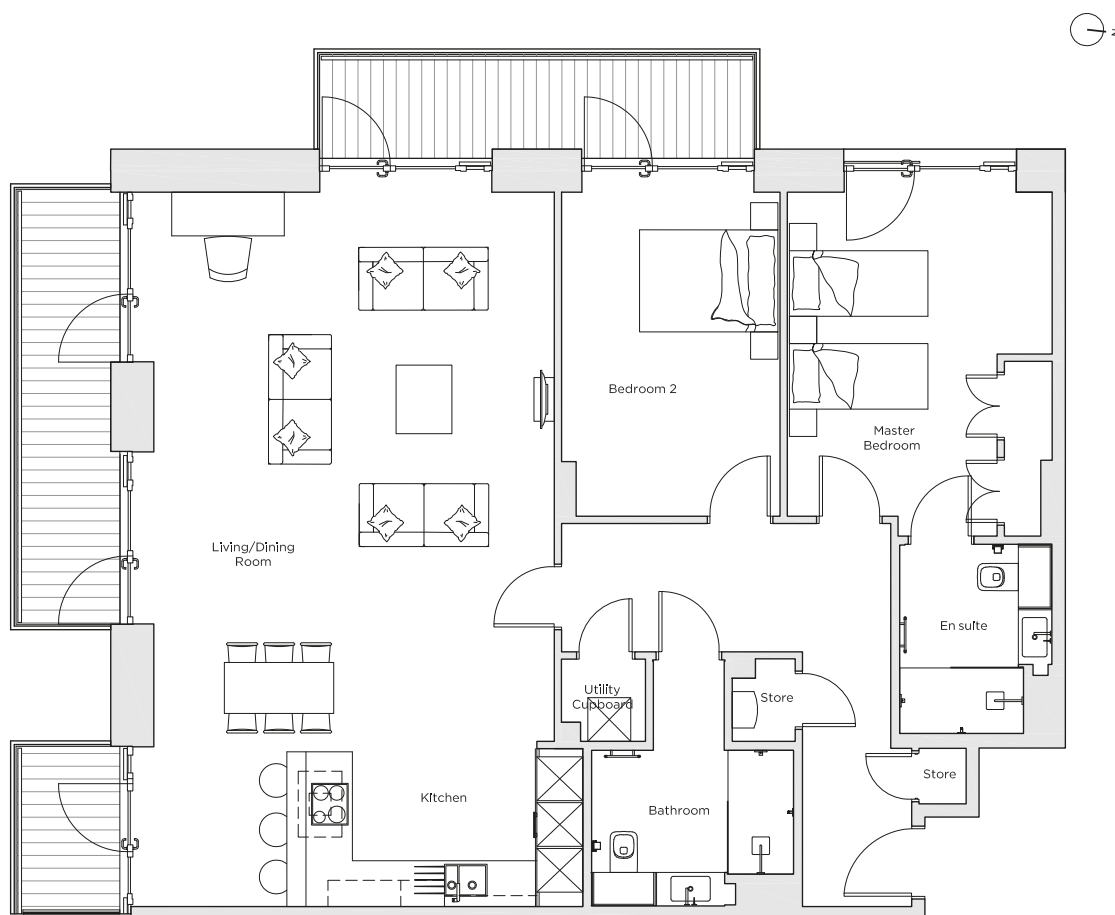


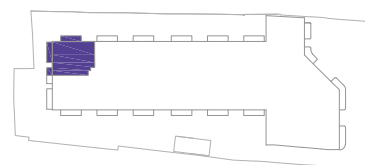
Audley Nightingale Place

Plot 19, First Floor



Internal Measurements

	Metric (m)	Imperial (ft)
Living/Dining Room	7.5 x 5.5	24' 7" x 18' 1"
Kitchen	2.2 x 5.5	7' 3" x 18' 1"
Master Bedroom	4.5 x 3.6	14' 9" x 11' 10"
Bedroom 2	4.5 x 3.0	14' 9" x 9' 10"
Balcony 1	1.2 x 6.0	3' 11" x 19' 8"
Balcony 2 + 3	8.2 x 1.2	26' 11" x 3' 11"



Audley Nightingale Place
3 Nightingale Lane,
London
SW4 9AH

020 3802 1580
www.audleyvillages.co.uk

Drawings are preliminary and may be subject to change pending detailed design.
Furniture for illustration purposes only. Built-in wardrobes in bedrooms have not been included in the overall dimensions. Dimensions indicate main area of room only. These pages are intended for marketing purposes only. Designs vary according to plot and all details should be checked at the Sales Office.
April 2018



Audley Nightingale Place

First Floor Apartment
Plot 19



2 bedroom first floor apartment

Stunning dual aspect apartment with full height windows. Access to three private balconies overlooking landscaped gardens. This property enjoys ample space and luxury finishing throughout with a Miele SieMatic kitchen offering integrated appliances with washer/dryer, microwave and dishwasher.

Property specifications:

- Three private balconies overlooking landscaped gardens
- Luxury SieMatic kitchen with integrated Miele appliances including dishwasher, fridge/freezer and oven
- Master bedroom with fitted wardrobe and en suite with walk-in shower and Villeroy & Boch sanitaryware
- Second double bedroom
- Second Villeroy & Boch bathroom
- Hallway storage



Audley Nightingale Place
3 Nightingale Lane, London SW4 9AH
020 3802 1580
www.audleyvillages.co.uk

