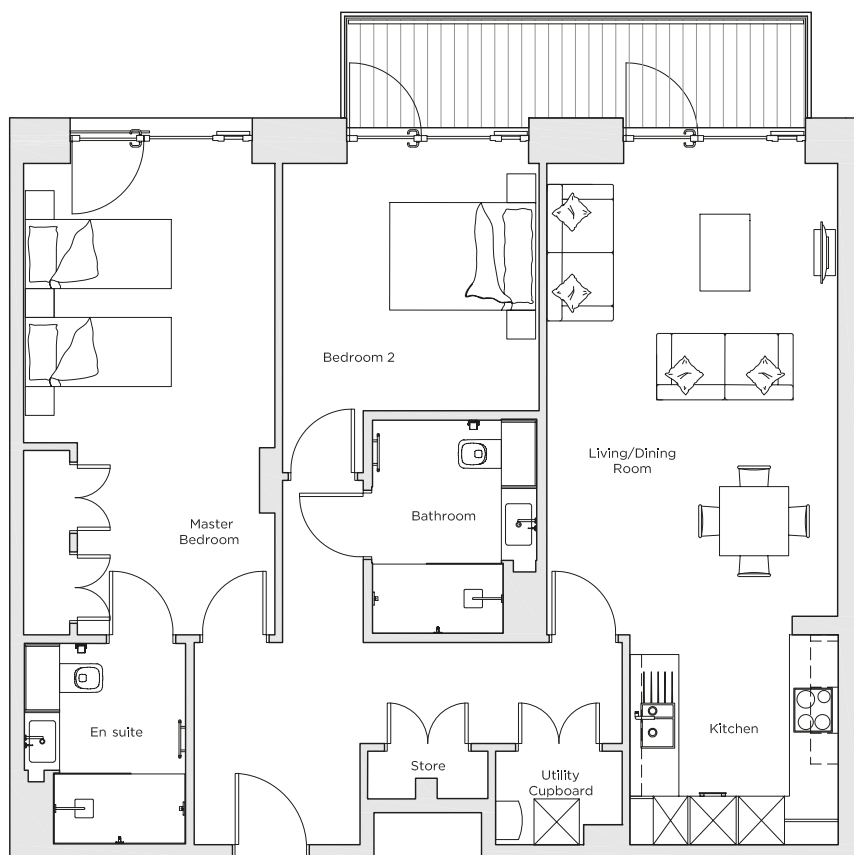
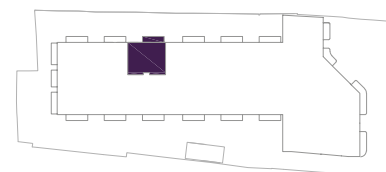


Audley Nightingale Place

Plot 17, First Floor



Internal Measurements	Metric (m)	Imperial (ft)
Living/Dining Room	6.10 x 3.80	20'0" x 12'6"
Kitchen	2.70 x 2.70	8'10" x 8'10"
Master Bedroom	6.10 x 3.30	20'0" x 10'10"
Bedroom 2	3.20 x 3.30	10'6" x 10'10"
Balcony	1.20 x 6.00	3'11" x 19'8"



Audley Nightingale Place
3 Nightingale Lane,
London
SW4 9AH

020 3802 1580
www.audleyvillages.co.uk

Drawings are preliminary and may be subject to change pending detailed design.
Furniture for illustration purposes only. Built-in wardrobes in bedrooms have not been included in the overall dimensions. Dimensions indicate main area of room only. These pages are intended for marketing purposes only. Designs vary according to plot and all details should be checked at the Sales Office.
April 2018



Audley Nightingale Place

First Floor Apartment
Plot 17



2 bedroom first floor apartment

This delightful two bedroom, two bathroom first floor apartment has been designed with space and quality in mind, including a designer SieMatic kitchen with integrated appliances. The private, sunny balcony can be accessed from the living/dining room and bedroom.

Property specifications:

- Luxury SieMatic kitchen with integrated Miele appliances including dishwasher, fridge/freezer and oven
- Large private balcony accessed from the open plan kitchen/living/dining room and bedroom
- Master bedroom with fitted wardrobe and en suite with walk-in shower and Villeroy & Boch sanitaryware
- Second Villeroy & Boch bathroom with walk-in shower
- Second double bedroom
- Plenty of storage throughout

Audley Nightingale Place
3 Nightingale Lane, London SW4 9AH
020 3802 1580
www.audleyvillages.co.uk

