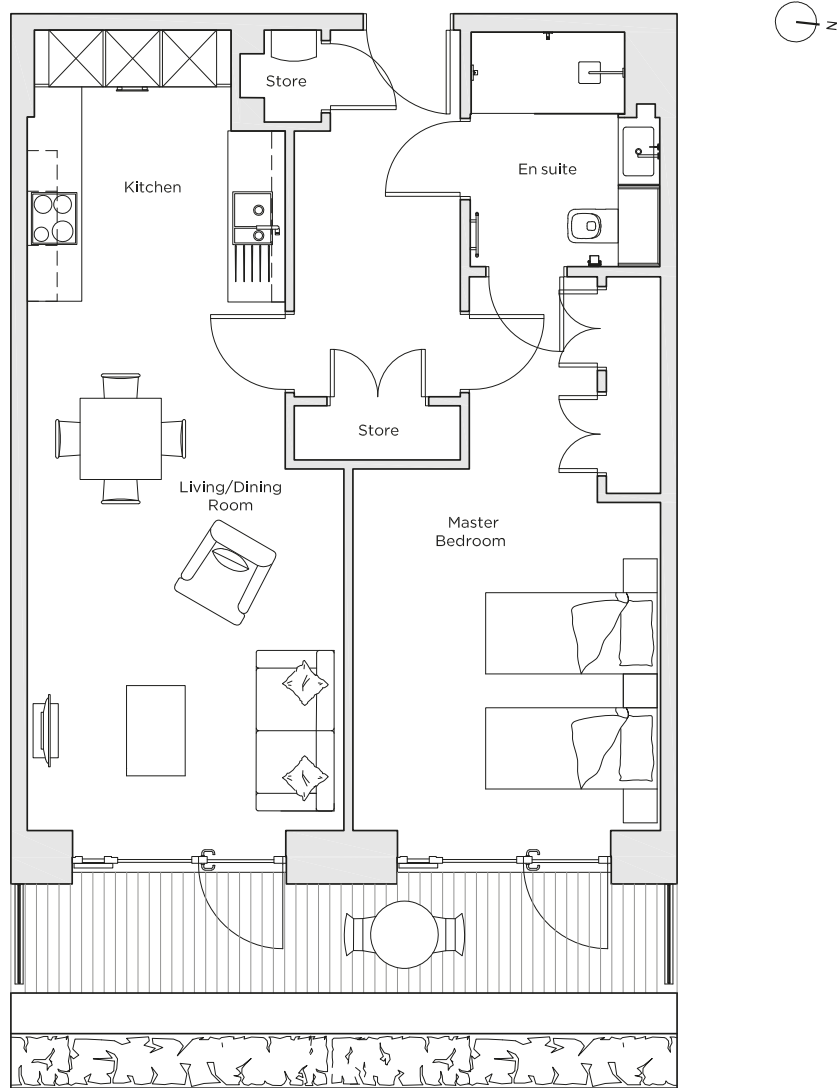


Audley Nightingale Place

Plot 11, Ground Floor



Internal Measurements	Metric (m)	Imperial (ft)
Living/Dining Room	5.8 x 3.5	19' 0" x 11' 6"
Kitchen	3.1 x 2.2	10' 2" x 7' 3"
Master Bedroom	4.0 x 3.4	13' 1" x 11' 2"
Terrace	1.2 x 7.2	3' 11" x 23' 7"



Audley Nightingale Place
3 Nightingale Lane,
London
SW4 9AH

020 3802 1580
www.audleyvillages.co.uk

Drawings are preliminary and may be subject to change pending detailed design.
Furniture for illustration purposes only. Built-in wardrobes in bedrooms have not been included in the overall dimensions. Dimensions indicate main area of room only. These pages are intended for marketing purposes only. Designs vary according to plot and all details should be checked at the Sales Office.
April 2018



Audley Nightingale Place

Ground Floor Apartment
Plot 11



1 bedroom ground floor apartment

This beautifully designed one bedroom, ground floor apartment, has a quality finish with plenty of space to enjoy. The bedroom includes double fitted wardrobes and an en suite bathroom, it also has a patio door that leads out onto the terrace which can be enjoyed all year round.

Property specifications:

- Luxury SieMatic kitchen with integrated Miele appliances including dishwasher, fridge/freezer and oven
- Large private terrace accessed from the open plan kitchen/living/dining room and master bedroom
- Master bedroom with fitted wardrobe and en suite with walk-in shower and Villeroy & Boch sanitaryware
- Hallway storage

Audley Nightingale Place
3 Nightingale Lane, London SW4 9AH
020 3802 1580
www.audleyvillages.co.uk

