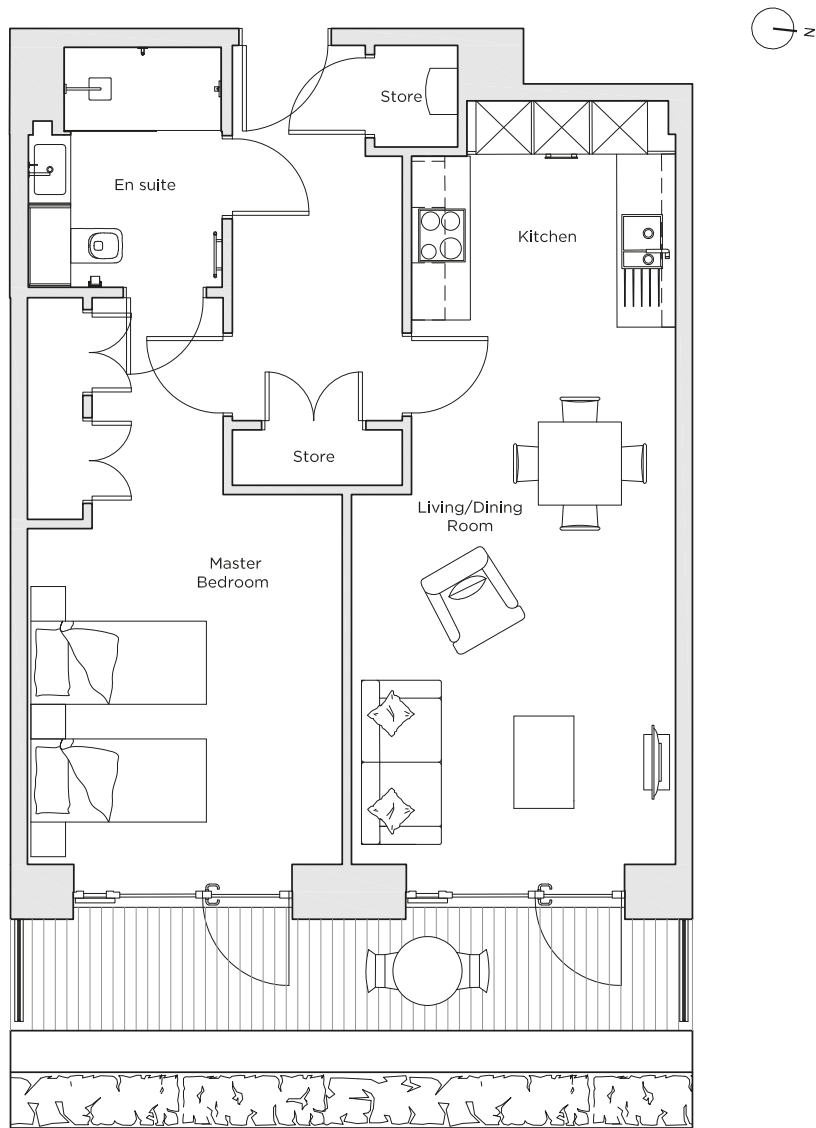


# Audley Nightingale Place

Plot 10, Ground Floor

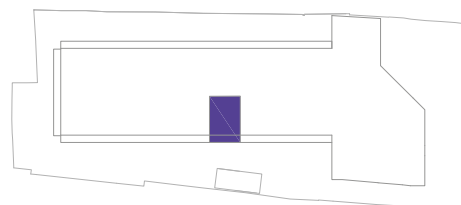


Internal Measurements	Metric (m)	Imperial (ft)
Living/Dining Room	5.8 x 3.5	19' 0" x 11' 6"
Kitchen	2.5 x 2.2	8' 2" x 7' 3"
Master Bedroom	4.0 x 3.4	13' 1" x 11' 2"
Terrace	1.2 x 7.1	3' 11" x 23' 4"

Audley Nightingale Place  
3 Nightingale Lane,  
London  
SW4 9AH

020 3802 1580  
[www.audleyvillages.co.uk](http://www.audleyvillages.co.uk)

Drawings are preliminary and may be subject to change pending detailed design.  
Furniture for illustration purposes only. Built-in wardrobes in bedrooms have not been included in the overall dimensions. Dimensions indicate main area of room only. These pages are intended for marketing purposes only. Designs vary according to plot and all details should be checked at the Sales Office.  
April 2018



# Audley Nightingale Place

Ground Floor Apartment  
Plot 10



## 1 bedroom ground floor apartment

This one bedroom apartment has plenty of storage throughout including fitted wardrobes and two storage cupboards. Both the bedroom and the open plan kitchen/living room have access to a full width enclosed terrace.

Property specifications:

- Large private terrace accessed from the open plan kitchen/living/dining room and master bedroom
- Luxury SieMatic kitchen with integrated Miele appliances including dishwasher, fridge/freezer and oven
- Master bedroom with double fitted wardrobe and en suite with walk-in shower and Villeroy & Boch sanitaryware
- Hallway storage

Audley Nightingale Place  
3 Nightingale Lane, London SW4 9AH  
020 3802 1580  
[www.audleyvillages.co.uk](http://www.audleyvillages.co.uk)

