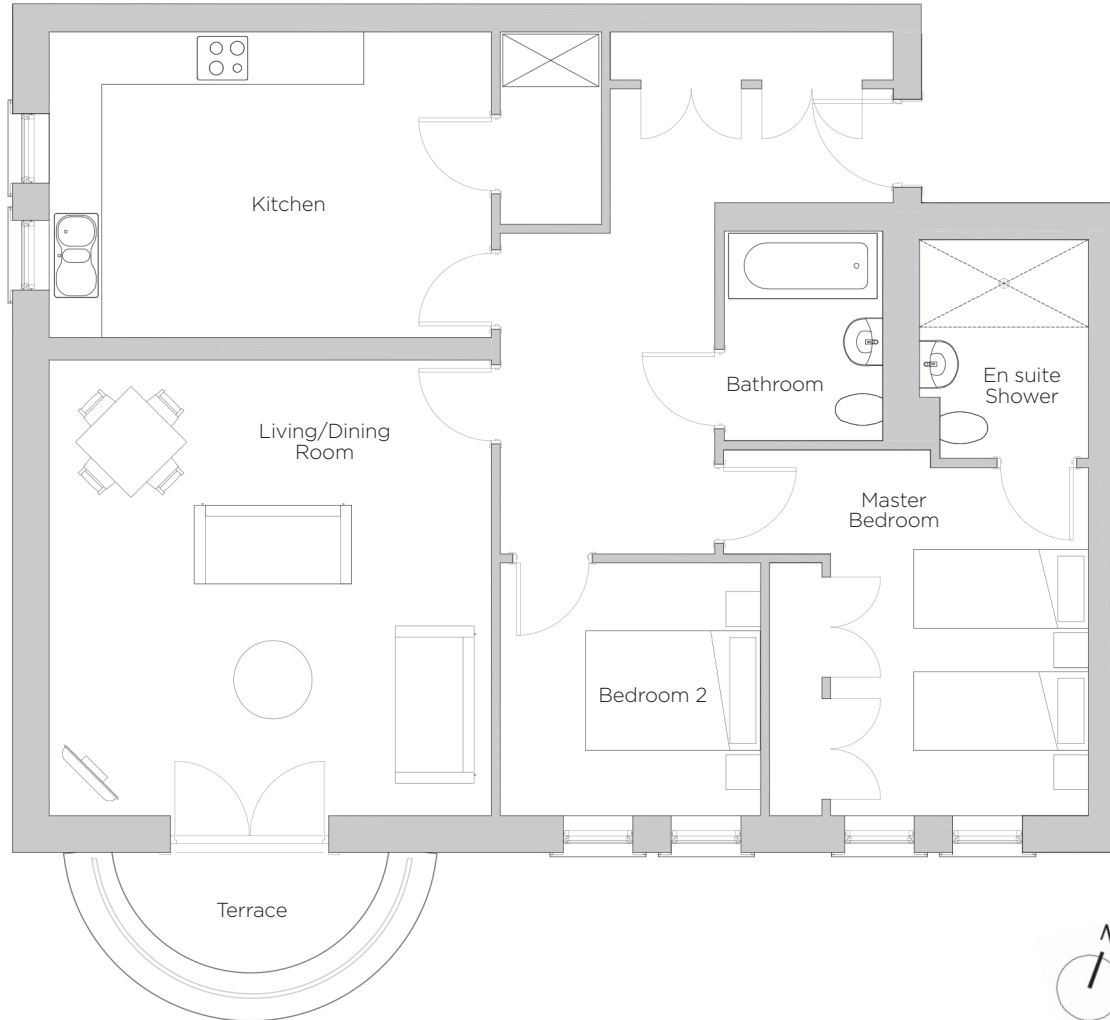


Audley Redwood

14 Smyth Court
Second Floor Apartment
Plot 90



Internal Measurements	Metric (m)	Imperial (ft)
Living/Dining Room	5.22m x 5.06m	17'1" x 16'7"
Kitchen	5.06m x 3.50m	16'7" x 11'6"
Master Bedroom	3.99m x 2.87m	13'1" x 9'8"
Bedroom 2	2.98m x 2.90m	9'9" x 9'6"
Terrace (approx)	3.00m x 1.38m	10'0" x 4'6"



Audley Redwood
Beggar Bush Lane, Failand, Bristol BS8 3TF
01275 217 797
www.audleyvillages.co.uk

Built-in wardrobes in bedrooms have not been included in the overall dimensions.
Maximum measurements shown. These pages are intended for marketing purposes only.
Designs vary according to plot and all details should be checked at the Sales Office.
Nov 2018



Audley Redwood

14 Smyth Court
Second Floor Apartment
Plot 90



2 bedroom second floor apartment

With easy access to Redwood Hall and the Audley Club, this second floor apartment is perfectly situated within the luxury village. There is a spacious kitchen and large living/dining room with south-facing terrace. The master bedroom has an en suite walk-in shower.

Property specifications:

- Fully fitted SieMatic kitchen with pantry cupboard
- South-facing terrace from living/dining room
- Master bedroom with built in double wardrobes and en suite walk-in shower
- Good size second double bedroom
- Plenty of hallway storage
- Villeroy & Boch guest bathroom

Audley Redwood
Beggar Bush Lane, Failand, Bristol BS8 3TF
01275 217 797
www.audleyvillages.co.uk

