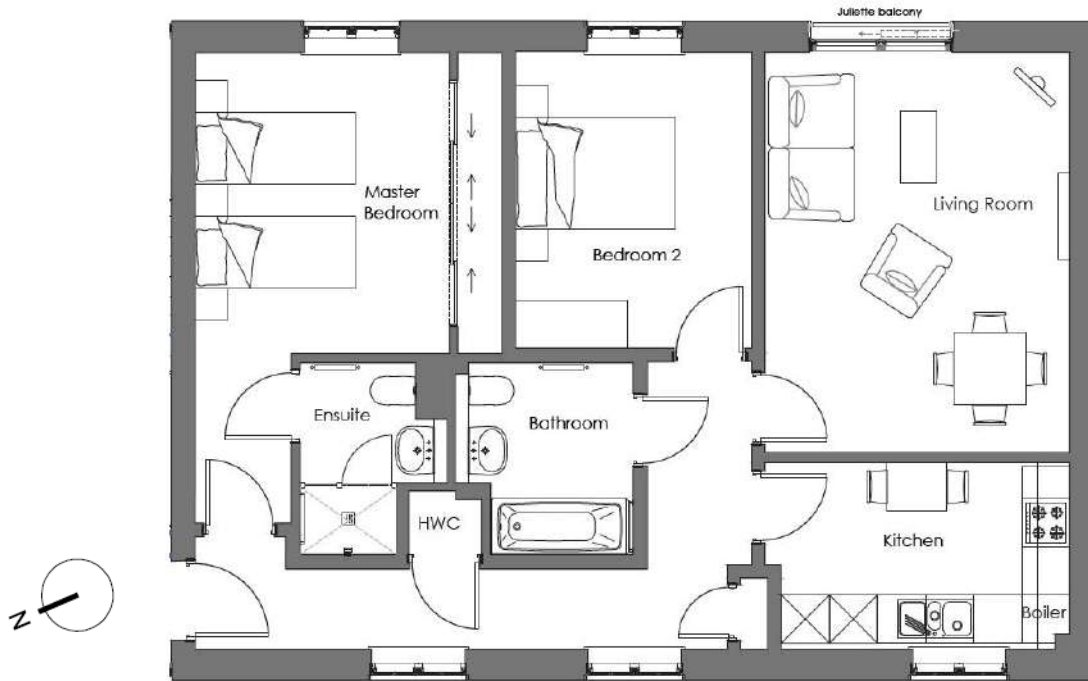
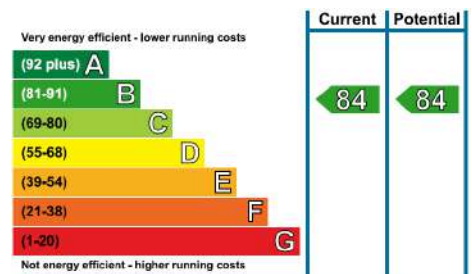


# Audley Mote House

8 Woodville Court  
Two bedroom pre-owned first floor apartment



Internal Measurements	Metric (m)	Imperial (ft)
Living	4.99 x 3.81	16'5" x 12'6"
Kitchen	3.60 x 2.32	11'10" x 7'8"
Master Bedroom	3.76 x 3.18	12'4" x 10'5"
Bedroom 2	3.71 x 2.95	12'2" x 9'8"
Bathroom	2.40 x 2.06	7'10" x 6'9"
Ensuite	2.33 x 1.68	7'8" x 5'6"



Audley Mote House  
Mote Park, Nr Bearsted, Kent, ME15 8NQ  
01622 737 279 [motesales@audleyvillages.co.uk](mailto:motesales@audleyvillages.co.uk)  
[www.audleyvillages.co.uk](http://www.audleyvillages.co.uk)

Doorway to Master Bedroom and Kitchen, and the built-in wardrobes in bedrooms have not been included in the overall dimensions. Maximum measurements shown. These pages are intended for marketing purposes only. Designs vary according to plot and all details should be checked at the Sales office. June 2020.

# Audley Mote House

8 Woodville Court  
Two bedroom pre-owned first floor apartment



## Two bedroom apartment

This delightful two bedroom first floor apartment in Woodville Court, is situated close to Mote House and offers views across to woodland. The property has a large master bedroom with fitted wardrobes and an en suite bathroom. There is a large living room that is perfectly enhanced by a Juliet balcony and a modern kitchen with integrated appliances.

### Property specifications

- Two bedroom apartment
- Ensuite shower & family bathroom
- Luxury fitted Siematic kitchen with fitted appliances
- Master bedroom with fitted wardrobes
- Pleasant aspect towards woodland
- Gas central heating and double glazing
- Furniture can be included at an additional cost

**Guide Price £385,000** (other fees apply)

Monthly management fee £777.28  
Annual ground rent £500

Viewing by appointment with the sales office.

Audley Mote House  
Mote Park, Nr Bearsted, Kent, ME15 8NQ  
01622 737 279 [motesales@audleyvillages.co.uk](mailto:motesales@audleyvillages.co.uk)  
[www.audleyvillages.co.uk](http://www.audleyvillages.co.uk)

