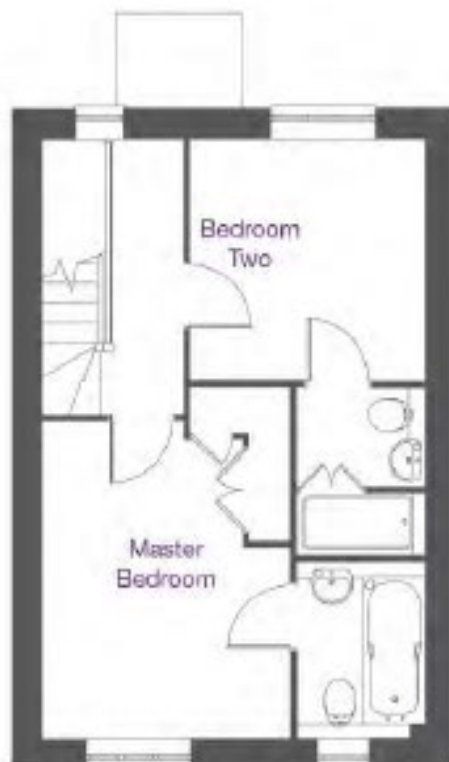
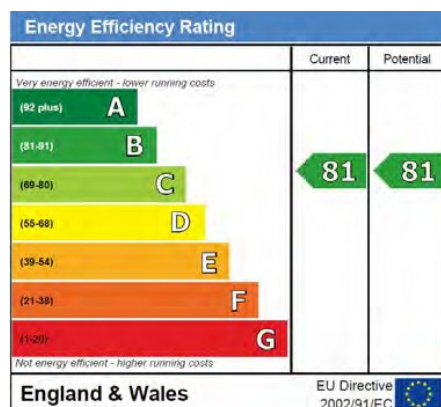


Audley St Elphin's Park

8 Crompton Close
2 Bedroom pre-owned cottage



Internal Measurements	Metric (m)	Imperial (ft)
Living/Dining Room	5.15m x 3.70m	17'0" x 12'3"
Kitchen	2.35m x 2.90m	7'9" x 9'8"
Master Bedroom	3.35m x 4.05m	11'0" x 13'5"
Bedroom 2	3.10m x 3.10m	10'4" x 10'4"



Audley St Elphin's Park
Dale Road South, Darley Dale, Matlock DE4 2RH
01629 733 337 stelphinssales@audleyvillages.co.uk

Built in wardrobes in bedrooms have not been included in the overall dimensions.
Maximum measurements shown. These pages are intended for marketing purposes only.
Designs vary according to plot and all details should be checked at the Sales office.
April 2019

Audley St Elphin's Park

8 Crompton Close
2 Bedroom pre-owned cottage

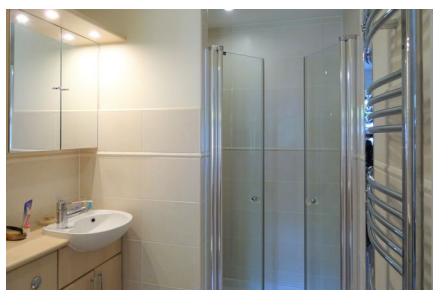


2 Bedroom cottage



A well-appointed two bedroom cottage boasting a spacious living/dining room that offers direct access to the south-facing terrace via dual French doors. There is a modern Shaker style kitchen with integrated appliances and a downstairs W.C. On the first floor there are two good sized bedrooms that are both enhanced by en suite bathrooms.

Property specifications



- Spacious living/dining room offering direct access to south-facing terrace
- Shaker style kitchen with integrated appliances
- Master bedroom with fitted wardrobes and en suite bathroom
- Guest bedroom with en suite bathroom
- Fitted fireplace

£260,000* (other fees apply)

*If completed by the 15 October 2019

Monthly management fee £681.20

Annual Ground Rent £100

Viewing by appointment with the sales office.

Audley St Elphin's Park
Dale Road South, Darley Dale, Matlock DE4 2RH
01629 733 337 stelphinsales@audleyvillages.co.uk

