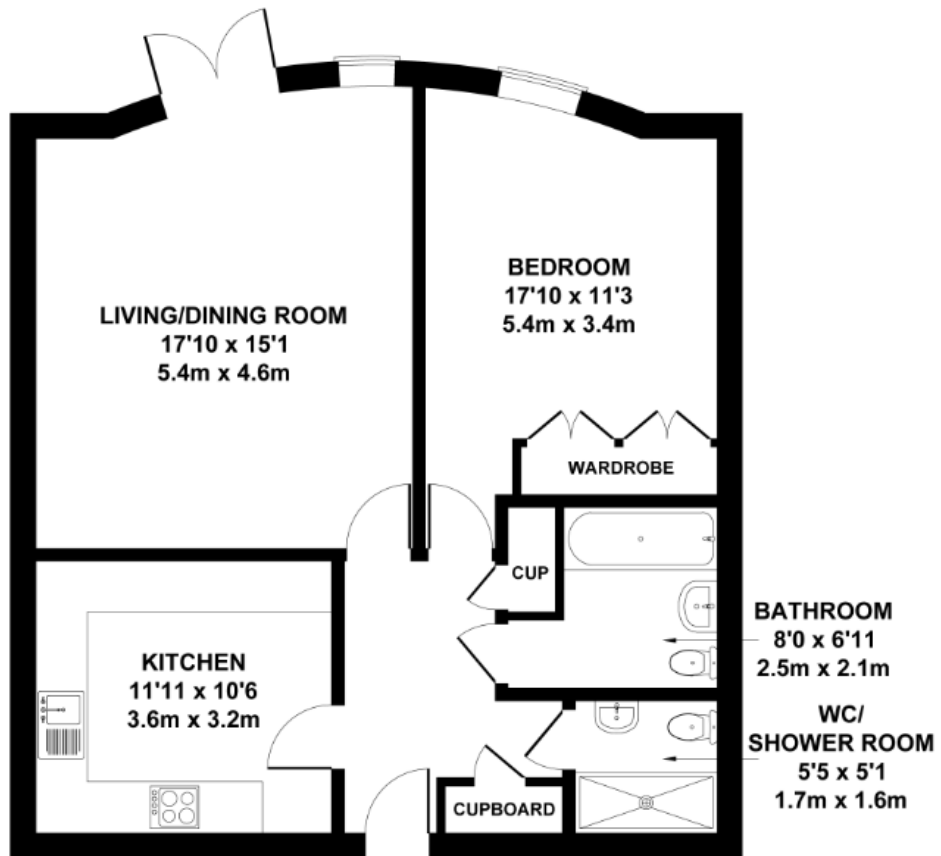


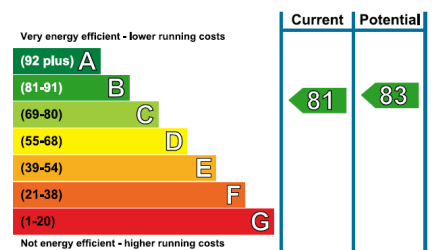
Audley Willicombe Park

8 Beech Court

One bedroom 'pre-owned' ground floor apartment



Internal Measurements	Metric (m)	Imperial (ft)
Living/Dining Room	5.4m x 4.6m	17'10" x 15'1"
Kitchen	3.6m x 3.2m	11'11" x 10'6"
Bedroom	5.4m x 3.4m	17'10" x 11'3"
Bathroom	2.5m x 2.1m	8'0" x 6'11"
W.C./Shower room	1.7m x 1.6m	5'5" x 5'1"
Total Sq.Ft 764		



Audley Willicombe Park
 Willicombe House, Royal Tunbridge Wells, Kent TN2 3UU
 01892 457 002 willicombesales@audleyvillages.co.uk

Built in wardrobes in bedrooms have not been included in the overall dimensions.
 Maximum measurements shown. These pages are intended for marketing purposes only.
 Designs vary according to plot and all details should be checked at the Sales office.
 April 2019

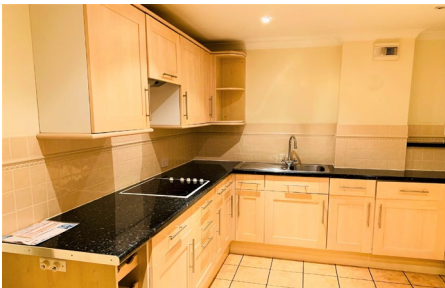
Audley Willicombe Park

8 Beech Court

One bedroom 'pre-owned' ground floor apartment



One Bedroom Apartment



A charming one bedroom apartment located on the ground floor of Beech Court. The property enjoys a spacious living/dining room that offers direct access to the south-facing patio area. The master bedroom is well-appointed and is complemented by fitted wardrobes. There is a family bathroom and separate shower room with a W.C.



Property specifications

- Large fitted kitchen
- Spacious living/dining room
- Master bedroom with fitted wardrobes
- Hallway with storage facilities
- South-facing patio area
- Allocated parking



£310,000 (other fees apply)

Monthly management fee £803.78

Annual Ground Rent £100

Viewing by appointment with the sales office.

Audley Willicombe Park
Willicombe House, Royal Tunbridge Wells, Kent TN2 3UU
01892 457 002 willicombesales@audleyvillages.co.uk

