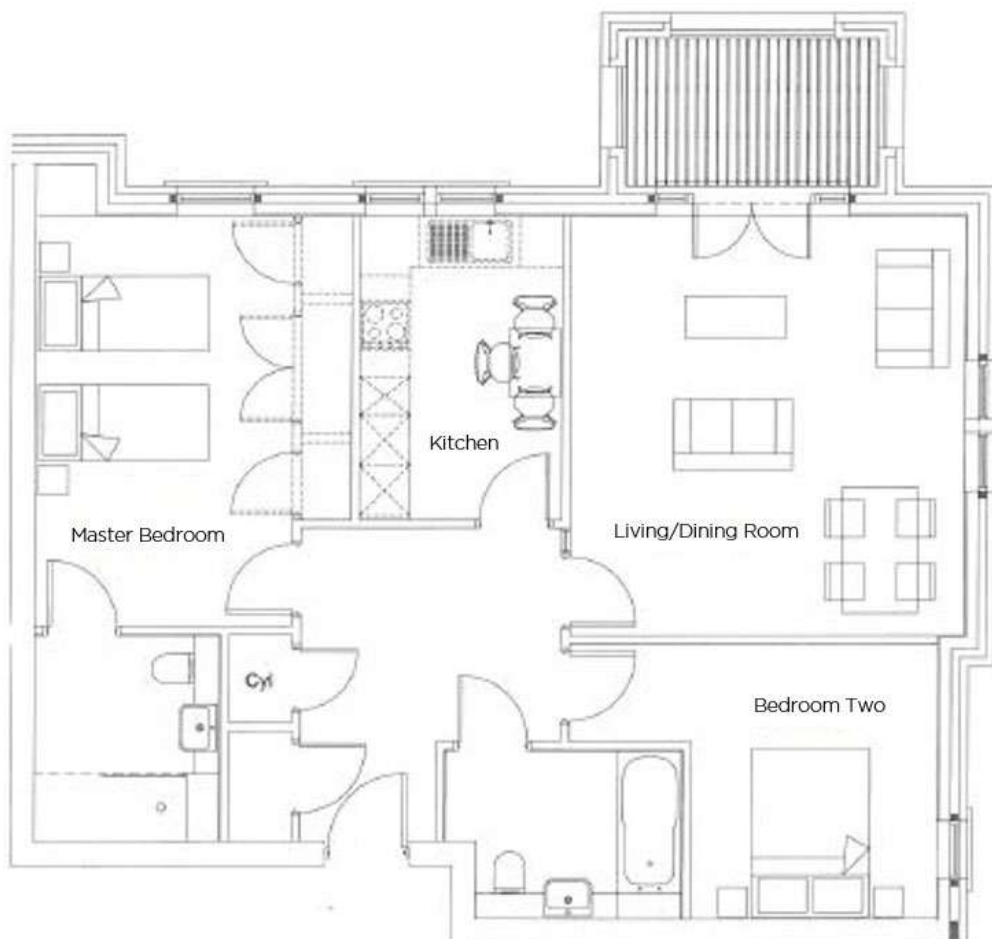


# Audley St Elphin's Park

7 Robinson Court  
Two bedroom first floor 'pre-owned' apartment



Internal Measurements	Metric (m)	Imperial (ft)
Kitchen	2.40m x 3.60m	7'10" x 11'9"
Living/Dining room	4.70m x 4.95m	15'5" x 16'2"
Master bedroom	3.75m x 4.85m	12'3" x 15'10"
Bedroom two	2.95m x 3.30m	9'8" x 10'9"



Audley St Elphin's Park  
Dale Road South, Darley Dale, Matlock DE4 2RH  
01629 733 337 [stelphinssales@audleyvillages.co.uk](mailto:stelphinssales@audleyvillages.co.uk)

Built in wardrobes in bedrooms have not been included in the overall dimensions.  
Maximum measurements shown. These pages are intended for marketing purposes only.  
Designs vary according to plot and all details should be checked at the Sales office.  
July 2017



# Audley St Elphin's Park

7 Robinson Court

Two bedroom first floor 'pre-owned' apartment



## Two Bedroom Apartment

This charming two bedroom apartment is located conveniently close to St Elphin's House and all of the village amenities. The property has a spacious master bedroom with fitted wardrobes and an en suite shower room. There is a dual aspect living room with direct access to the private balcony and a modern SieMatic kitchen with integrated appliances.



## Property specifications

- Dual aspect living room with balcony
- SieMatic kitchen with integrated appliances and Corian worktops
- Master bedroom with fitted wardrobes and en suite shower room
- Guest bedroom and bathroom
- Allocated parking space



**£295,000** (other fees apply)

**\*Move for free package included\***

Monthly management fee £739.27

Annual ground rent £250

Viewing by appointment with the sales office.

Audley St Elphin's Park  
Dale Road South, Darley Dale, Matlock DE4 2RH  
01629 733 337 stelphinssales@audleyvillages.co.uk

