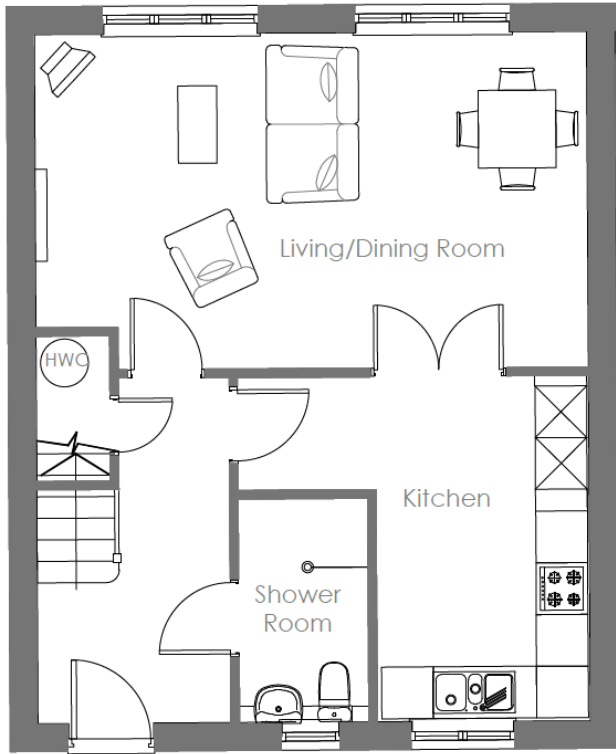
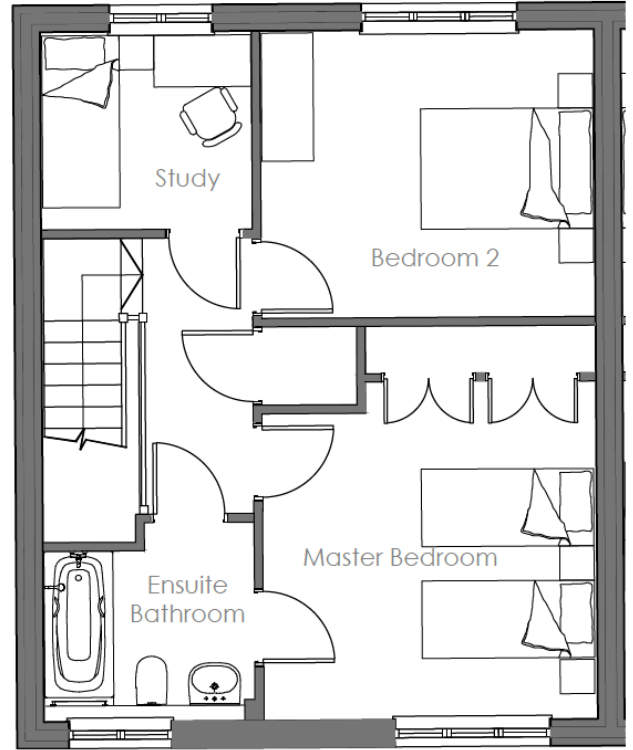


Audley Mote House

7 The Stables
Three bedroom pre-owned cottage

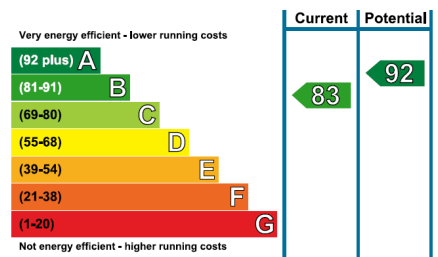


Ground Floor



First Floor

| Internal Measurements | Metric (m) | Imperial (ft) |
|-----------------------|-------------|----------------|
| Living/Dining Room | 6.41 x 3.90 | 21'0" x 12'9" |
| Kitchen | 4.01 x 2.47 | 13'2" x 8'1" |
| Master Bedroom | 3.93 x 3.88 | 12'11" x 12'9" |
| Bedroom 2 | 3.88 x 3.35 | 12'9" x 11'0" |
| Study | 2.46 x 2.31 | 8'1" x 7'7" |



Audley Mote House
Mote Park, Nr Bearsted, Kent, ME15 8NQ
01622 737 279 motesales@audleyvillages.co.uk
www.audleyvillages.co.uk

Built in wardrobes in bedrooms have not been included in the overall dimensions.
Maximum measurements shown. These pages are intended for marketing purposes only.
Designs vary according to plot and all details should be checked at the Sales office.
April 2019

Audley Mote House

7 The Stables
Three bedroom pre-owned cottage



Three bedroom cottage

This delightful three bedroom cottage has been built in the old stable block courtyard, adjacent to the grade 2* listed buildings and a few minutes walk from Mote House, where you will find all of the village's amenities available to you. The cottage offers wonderful views across the park from the front and rear of the property, which overlooks the clock tower.



Property specifications

- Living/dining room windows overlooking the park
- Fitted kitchen with integrated hob, oven microwave, fridge/freezer, dishwasher and washer dryer
- Downstairs shower room
- Master bedroom with Jack & Jill bathroom
- Guest bedroom with great views of the park
- Study/Bedroom offering additional living space
- Gas central heating and double glazing
- Parking outside the property

Guide Price £499,950 (other fees apply)

Monthly management fee £777.28
Annual ground rent £500

Viewing by appointment with the sales office.



Audley Mote House
Mote Park, Nr Bearsted, Kent, ME15 8NQ
01622 737 279 motesales@audleyvillages.co.uk
www.audleyvillages.co.uk

