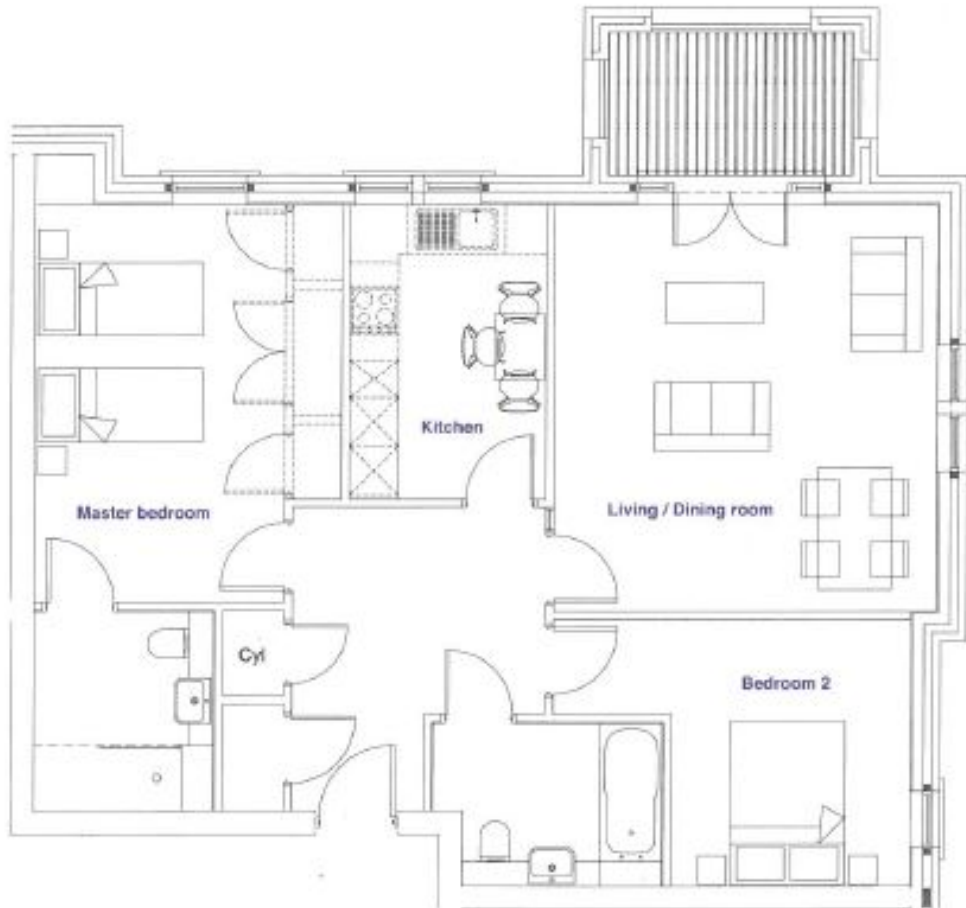
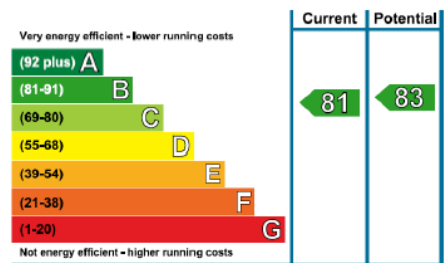


Audley St Elphin's Park

7 Robinson Court
Two bedroom first floor pre-owned apartment



Internal Measurements	Metric (m)	Imperial (ft)
Kitchen	2.40m x 3.60m	7'10" x 11'9"
Living/Dining room	4.70m x 4.95m	15'5" x 16'2"
Master bedroom	3.75m x 4.85m	12'3" x 15'10"
Bedroom two	2.95m x 3.30m	9'8" x 10'9"



Audley St Elphin's Park
Dale Road South, Darley Dale, Matlock DE4 2RH
01629 258 001 stelphinssales@audleyvillages.co.uk

Built in wardrobes in bedrooms have not been included in the overall dimensions.
Maximum measurements shown. These pages are intended for marketing purposes only.
Designs vary according to plot and all details should be checked at the Sales office.
April 2019

Audley St Elphin's Park

7 Robinson Court
Two bedroom first floor pre-owned apartment



Two bedroom first floor apartment

This charming two bedroom apartment is located conveniently close to St Elphin's House and all of the village amenities. The property has a spacious master bedroom with fitted wardrobes and an en suite shower room. There is a dual aspect living room with direct access to the private balcony and a modern SieMatic kitchen with integrated appliances.



Property specifications

- Dual aspect living room with balcony
- SieMatic kitchen with integrated appliances
- Master bedroom with fitted wardrobes and en suite shower room
- Guest bedroom and bathroom
- Close proximity to St Elphin's House and village amenities



£315,000 (other fees apply)

Monthly management fee £723.36
Annual ground rent £250

Viewing by appointment with the sales office.

Audley St Elphin's Park
Dale Road South, Darley Dale, Matlock DE4 2RH
01629 258 001 stelphinssales@audleyvillages.co.uk