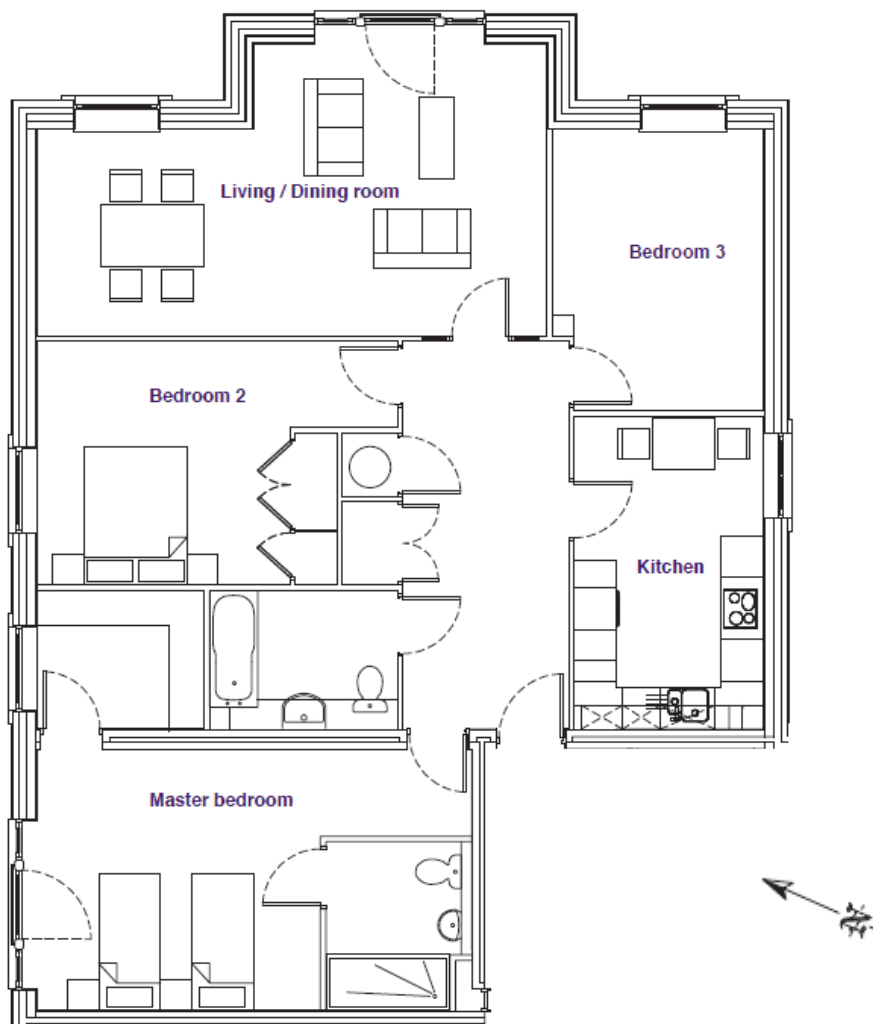


Audley Inglewood

7 Inglewood House
Three bedroom second floor apartment

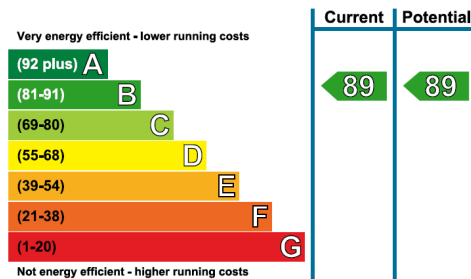


Internal Measurements	Metric (m)	Imperial (ft)
Living/Dining room	7.40m x 4.25m	24'3" x 13'11"
Kitchen	4.55m x 2.75m	14'11" x 9'0"
Master bedroom	4.15m x 3.85m	13'7" x 12'8"
Bedroom 2	4.35m x 3.55m	14'3" x 11'8"
Bedroom 3	4.10m x 3.05m	13'5" x 10'0"

Total Sq.ft 1257

Audley Inglewood
Templeton Road, Kintbury, Hungerford, RG17 9AA
01488 682 100 inglewoodsales@audleyvillages.co.uk
www.audleyvillages.co.uk

Built in wardrobes in bedrooms have not been included in the overall dimensions.
Maximum measurements shown. These pages are intended for marketing purposes only.
Designs vary according to plot and all details should be checked at the Sales office.
April 2019



Audley Inglewood

7 Inglewood House
Three bedroom second floor apartment



Three bedroom second floor apartment

This beautifully presented apartment has excellent internal space and enjoys far reaching views across park and farmland. The spacious entrance hall opens into the lovely living/dining room, the kitchen has ample room for a table and both rooms have a window seat to enjoy the views. The master bedroom has a walk in wardrobe and an en suite shower room. The guest room has additional storage and the third bedroom could also be used as an office or study.



Property specifications

- Large living/dining room with lovely views
- Kitchen/breakfast room with integrated appliances
- Master bedroom with a dressing room and an en suite shower room
- Family bathroom
- Guest bedroom with ample storage
- Third double bedroom or study
- Elegant hall with storage facilities



Guide Price £795,000 (other fees apply)

Monthly management fee £768.67
Bistro credit £59.13
Annual Ground rent £250

Viewing by appointment with the sales office.

Audley Inglewood
Templeton Road, Kintbury, Hungerford, RG17 9AA
01488 682 100 inglewoodsales@audleyvillages.co.uk
www.audleyvillages.co.uk

