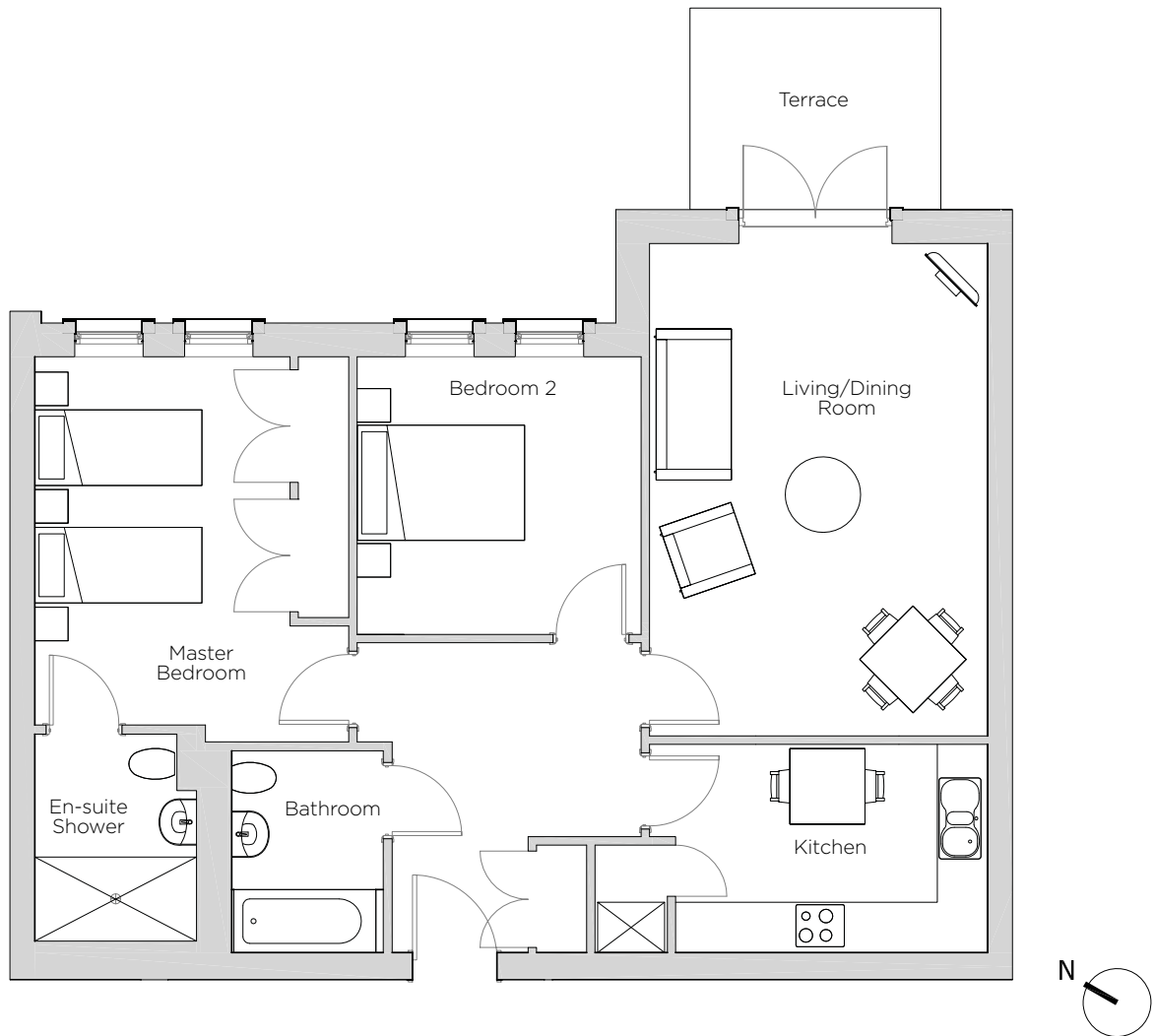


Audley Redwood

3 Whitebeam Court
Ground Floor Apartment
Plot 112



Internal Measurements

Metric (m)

Imperial (ft)

Living/Dining Room	5.87m x 4.05m	19'3" x 13'3"
Kitchen	3.73m x 2.48m	12'3" x 8'2"
Master Bedroom	4.39m x 3.05m	14'5" x 10'
Bedroom 2	3.40m x 3.31m	11'2" x 10'10"
Terrace (approx)	3.00m x 2.40m	9'10" x 7'10"



Audley Redwood
Beggars Bush Lane, Failand, Bristol BS8 3TF
01275 217 797
www.audleyvillages.co.uk

Built-in wardrobes in bedrooms have not been included in the overall dimensions.
Maximum measurements shown. These pages are intended for marketing purposes only.
Designs vary according to plot and all details should be checked at the Sales Office.
August 2018



Audley Redwood

3 Whitebeam Court
Ground Floor Apartment
Plot 112



Two bed ground floor apartment

Nestled by the woodland walk, this two bedroom apartment has a spacious living/dining room with a private terrace. The SieMatic kitchen has built in handleless units and Bosch appliances.

Property specifications:

- Master bedroom with built in double wardrobes and an en suite with walk in shower
- Guest bathroom
- Double second bedroom
- Spacious living/dining room with private terrace
- Luxury kitchen

Audley Redwood
Beggar Bush Lane, Failand, Bristol BS8 3TF
01275 217 797
www.audleyvillages.co.uk

