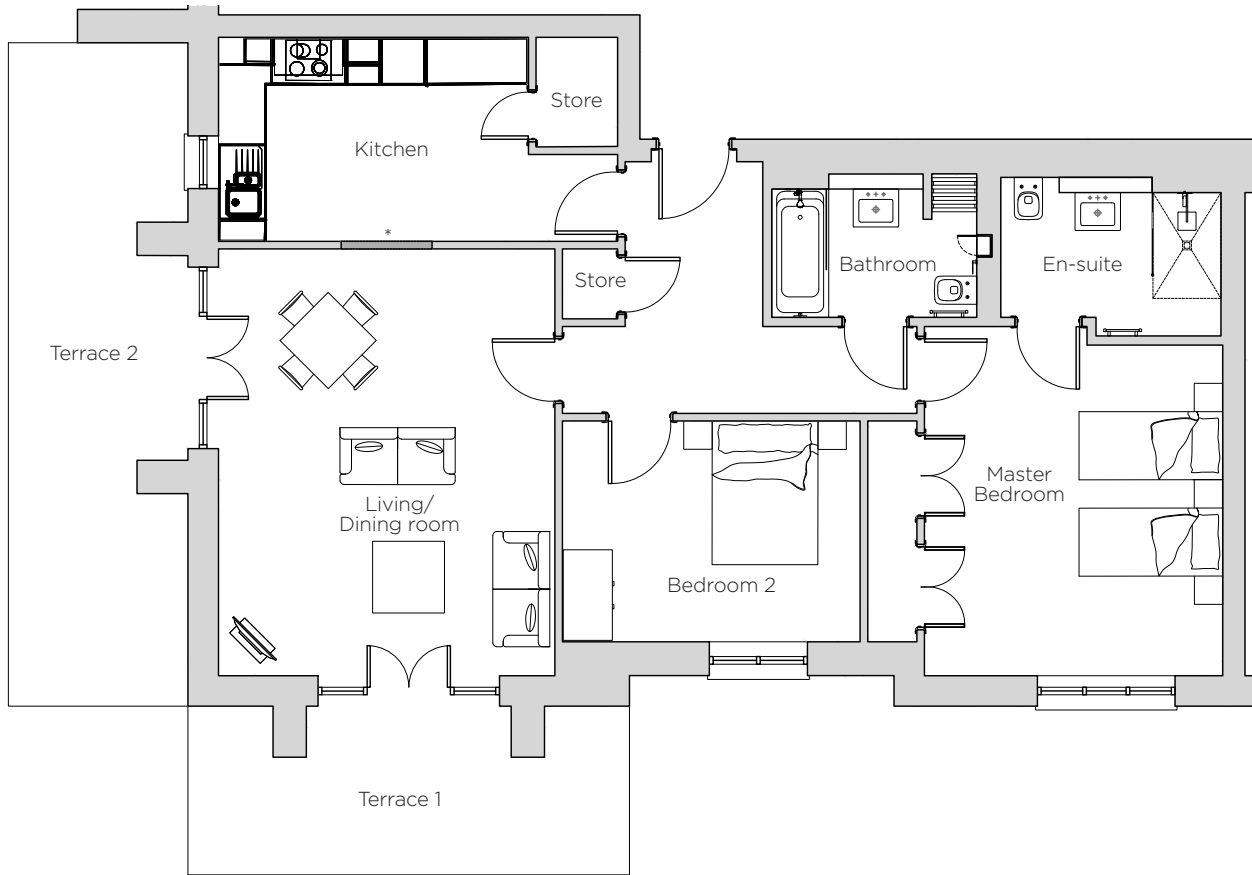


# Audley Stanbridge Earls

Building M, Plot 03  
Ground Floor



\* Open plan option available

Internal Measurements	Metric (m)	Imperial (ft)
Living/Dining Room	4.4 x 5.6	14'4" x 18'3"
Kitchen	5.2 x 2.7	17'0" x 8'8"
Master Bedroom	3.9 x 4.6	12'7" x 15'0"
Bedroom 2	3.9 x 2.9	12'7" x 9'5"
Terrace 1	5.8 x 2.3	19" x 7'5"
Terrace 2	8.7 x 2.5	28'5" x 8'2"



Audley Stanbridge Earls  
Romsey, Southampton, SO51 0ZS  
01794 278303  
[www.audleyretirement.co.uk](http://www.audleyretirement.co.uk)

Drawings are preliminary and may be subject to change pending detailed design. Furniture for illustration purposes only. Built-in wardrobes in bedrooms have not been included in the overall dimensions. Maximum measurements shown. These pages are intended for marketing purposes only. Designs vary according to plot and all details should be checked at the Sales Office.  
August 2017