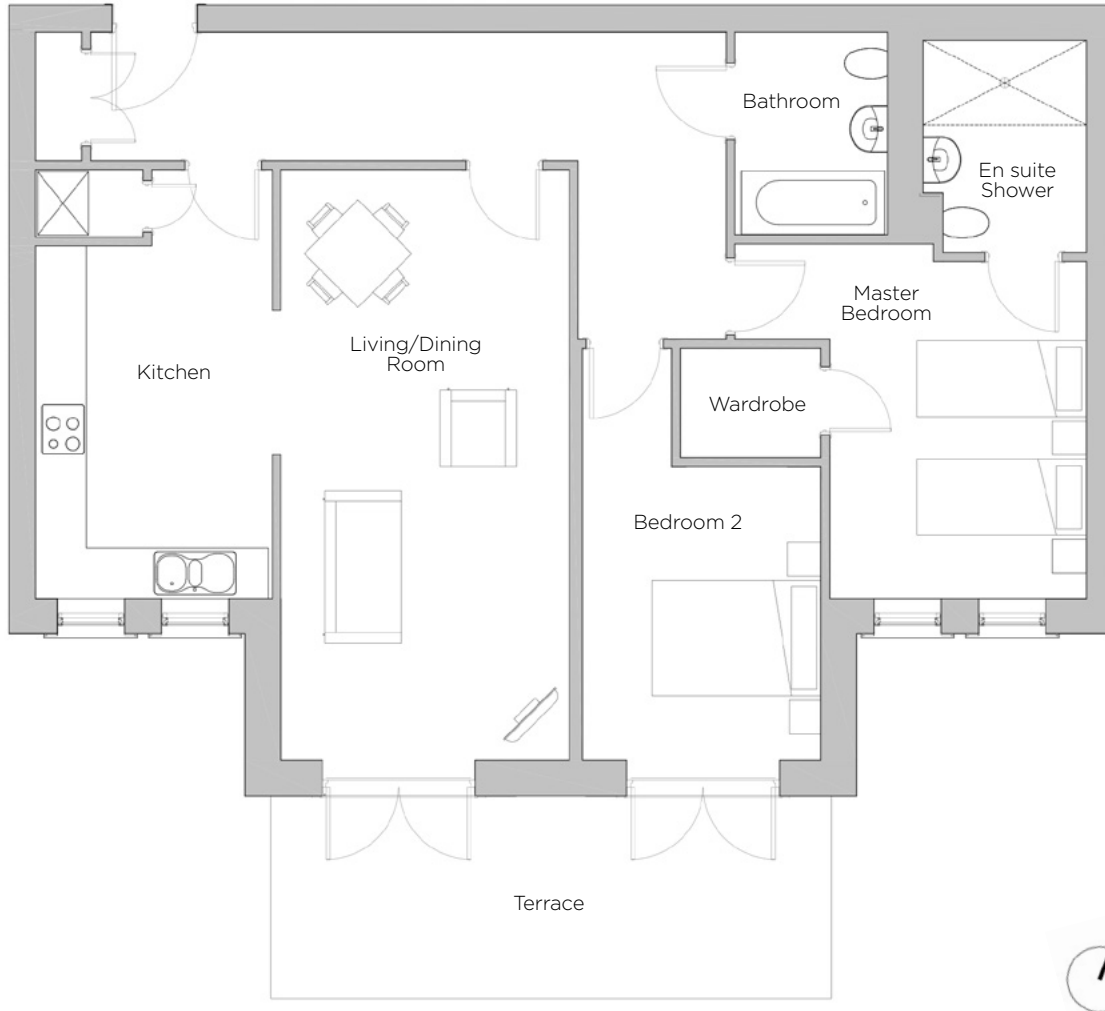
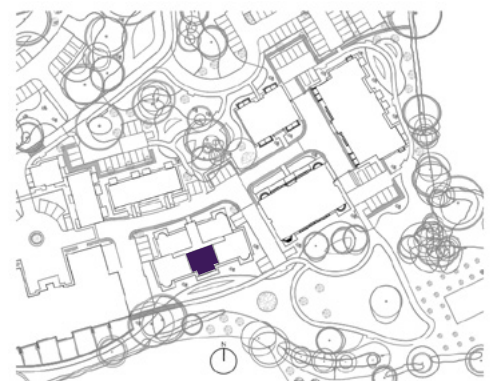


Audley Redwood

3 Smyth Court
Ground Floor Apartment
Plot 79



| Internal Measurements | Metric (m) | Imperial (ft) |
|-----------------------|---------------|----------------|
| Living/Dining Room | 6.99m x 3.42m | 22'11" x 11'3" |
| Kitchen | 4.17m x 2.80m | 13'8" x 9'2" |
| Master Bedroom | 3.99m x 3.05m | 13'1" x 10'0" |
| Bedroom 2 | 3.48m x 2.83m | 11'5" x 9'3" |
| Terrace (approx) | 6.63m x 2.40m | 21'9" x 7'10" |



Audley Redwood
Beggar Bush Lane, Failand, Bristol BS8 3TF
01275 217 797
www.audleyvillages.co.uk

Built-in wardrobes in bedrooms have not been included in the overall dimensions.
Maximum measurements shown. These pages are intended for marketing purposes only.
Designs vary according to plot and all details should be checked at the Sales Office.
July 2018



Audley Redwood

3 Smyth Court
Ground Floor Apartment
Plot 79



2 bedroom ground floor apartment

This spacious two bedroom apartment has a private south facing terrace which is accessible from both the living/dining room and second bedroom. There is a large SieMatic kitchen adjacent to the living/dining room.

Property specifications:

- Master bedroom with en suite walk in shower and walk in wardrobe
- Large second bedroom
- Villeroy & Boch bathroom
- Large kitchen with SieMatic handleless units
- South facing terrace accessible from living/dining room
- Hallway storage

Audley Redwood
Beggar Bush Lane, Failand, Bristol BS8 3TF
01275 217 797
www.audleyvillages.co.uk

