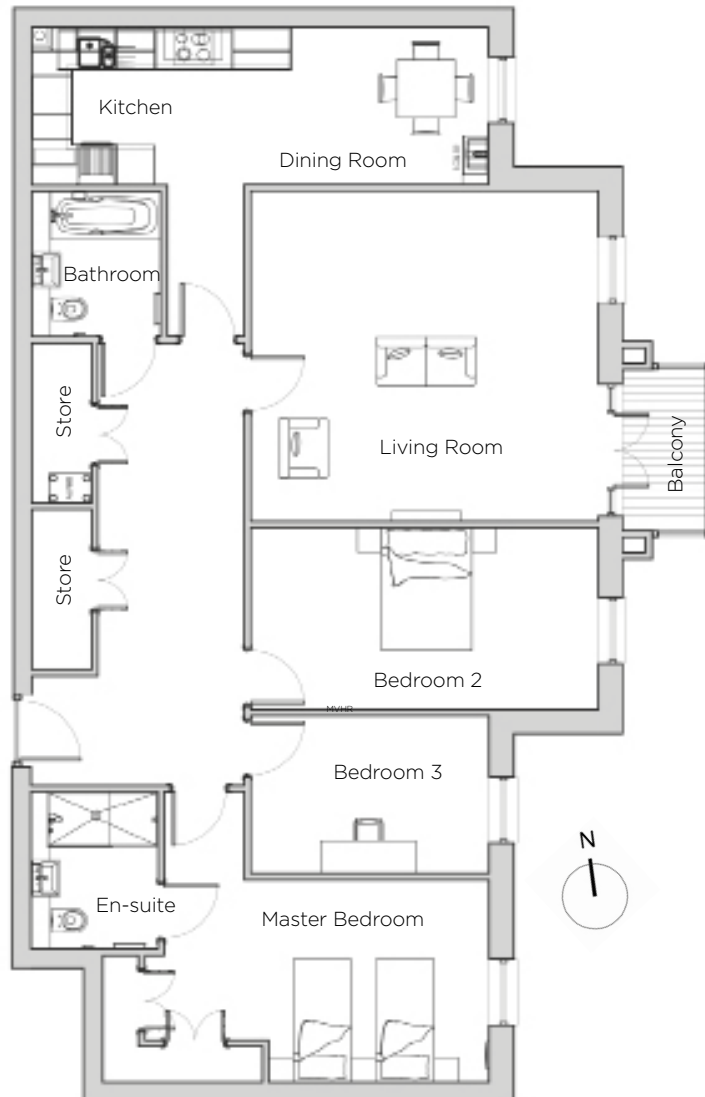


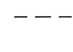


# Audley St George's Place

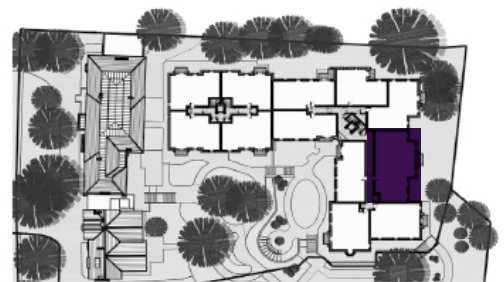
29 Chamberlain Place (E16)  
First Floor Apartment



**Drawing Legend:**

-  Boiler
-  MVHR
-  Reduced ceiling height

Internal Measurements	Metric (m)	Imperial (ft)
Living Room	5.36m x 5.10m	17'7" x 16'8"
Kitchen	7.06m x 2.43m	23'2" x 7'11"
Master Bedroom	5.96m x 4.49m	19'6" x 14'8"
Bedroom 2	5.37m x 2.80m	17'6" x 9'2"
Bedroom 3	3.68m x 2.43m	12'0" x 7'11"
<b>Total Apartment Area</b>	<b>127.2m<sup>2</sup></b>	<b>1369ft<sup>2</sup></b>



Audley St George's Place  
2 Church Road, Edgbaston, West Midlands B15 3SH  
0121 454 5270  
[www.audleyvillages.co.uk](http://www.audleyvillages.co.uk)

Built-in wardrobes in bedrooms have not been included in the overall dimensions.  
Maximum measurements shown. These pages are intended for marketing purposes only.  
Designs vary according to plot and all details should be checked at the Sales Office.  
March 2018



# Audley St George's Place

29 Chamberlain Place (E16)  
First Floor Apartment



CGI for illustration purposes only



## 3 bedroom first floor apartment

This stunning apartment gives a sense of true luxury. As well as having three spacious bedrooms, the property boasts an extremely large living room which opens on to a delightful east-facing balcony, as well as a modern dine-in kitchen.

Property specifications:

- Large living room with French doors onto private balcony
- High quality SieMatic kitchen with breakfast bar and space to dine
- Master bedroom with fitted wardrobes and en-suite shower
- Additional second bedroom and a study/guest bedroom

Audley St George's Place  
2 Church Road, Edgbaston, West Midlands B15 3SH  
0121 454 5270  
[www.audleyvillages.co.uk](http://www.audleyvillages.co.uk)



Photos for illustration purposes only