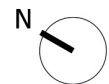
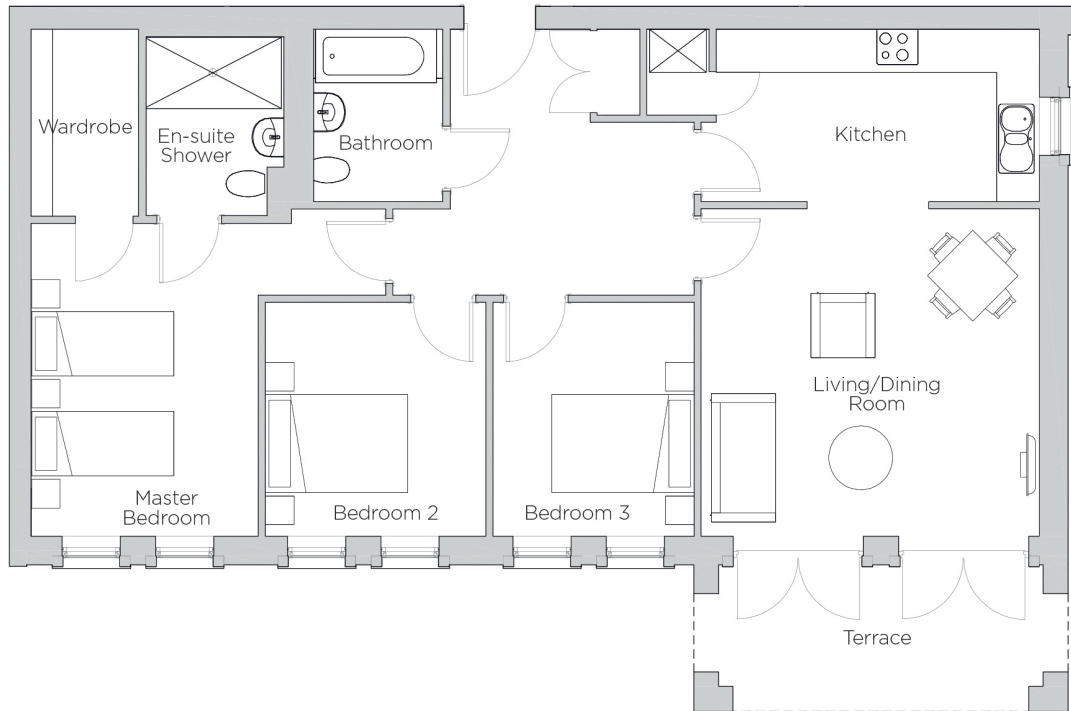


Audley Redwood

6 Whitebeam Court
Ground Floor Apartment
Plot 115



Internal Measurements	Metric (m)	Imperial (ft)
Living/Dining Room	4.76 x 4.59	15'7" x 15'1"
Kitchen	4.55 x 2.41	14'11" x 7'11"
Master Bedroom	4.39 x 3.38	14'5" x 11'1"
Bedroom 2	3.28 x 3.10	10'9" x 10'2"
Bedroom 3	3.28 x 2.83	10'9" x 9'3"
Terrace (approx)	5.24 x 2.05	17'2" x 6'9"



Audley Redwood
Beggar Bush Lane, Failand, Bristol BS8 3TG
01275 217 797
www.audleyvillages.co.uk

These floorplans are illustrative and for marketing purposes only. Maximum measurements are shown. Wardrobes not included in the overall room dimensions. Furniture shown to illustrate possible room layouts and not included in sale. Designs vary according to plot. All details should be checked at the Sales Office.
October 2018



Audley Redwood

6 Whitebeam Court
Ground Floor Apartment
Plot 115



3 bedroom ground floor apartment

A spacious, ground floor apartment with private terrace and easy access to the woodland walk. This apartment has a large master bedroom, with built-in wardrobe and en suite, and an additional two double bedrooms.

Property specifications:

- SieMatic kitchen accessed via the hallway or living/dining room
- Large living/dining room with west-facing private terrace
- Master bedroom with walk-in shower in the en suite
- Additional two good size bedrooms
- Second guest bathroom
- Hallway storage

Audley Redwood
Beggar Bush Lane, Failand, Bristol BS8 3TG
01275 217 797
www.audleyvillages.co.uk

