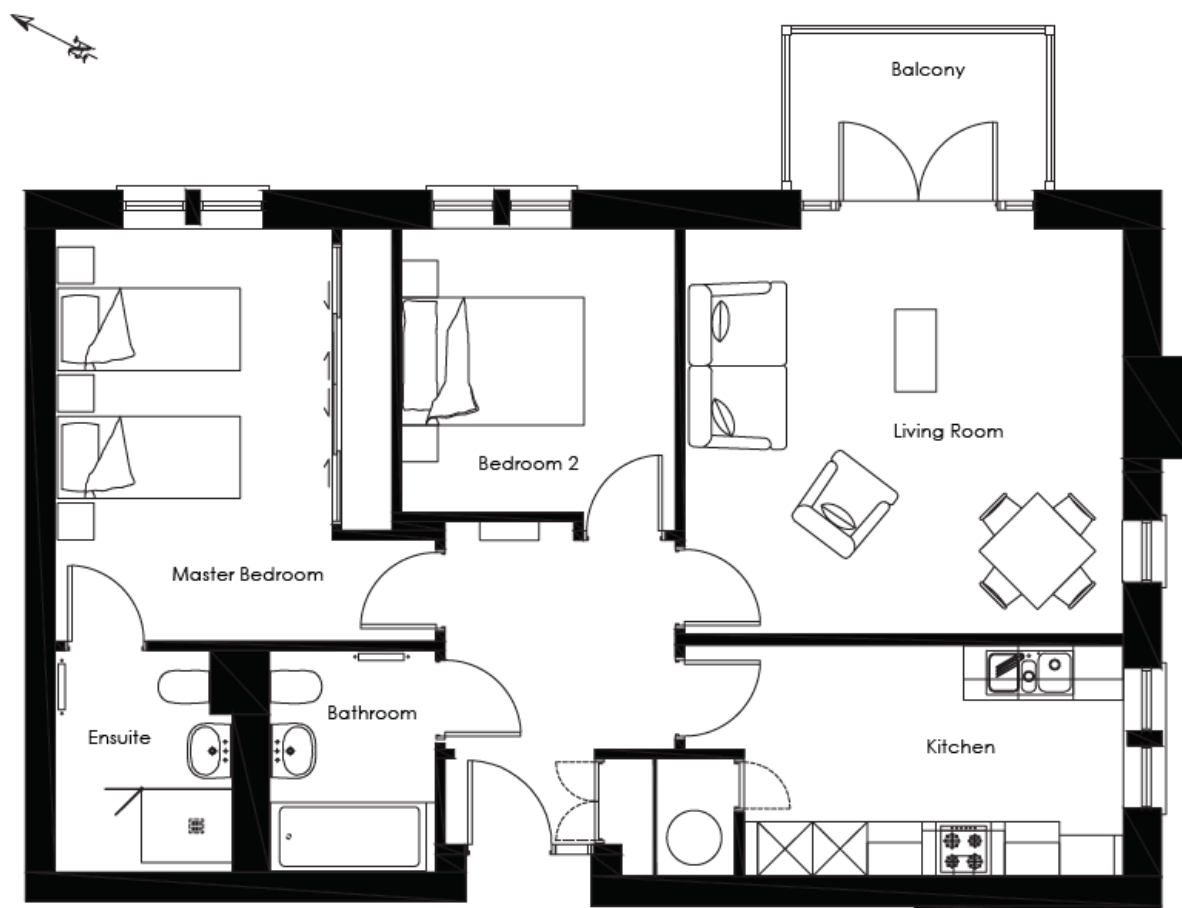
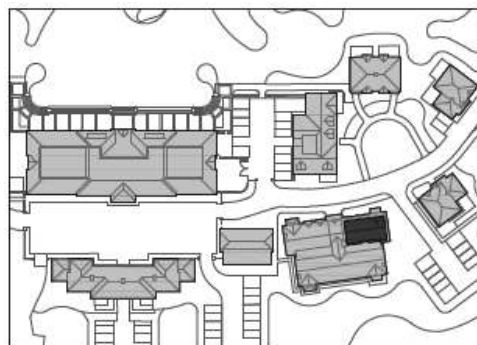


Audley Chalfont Dene

5 Portland Court
Two bedroom first floor apartment



Internal Measurements	Metric (m)	Imperial (ft)
Living Room	4.80m x 4.43m	15'9" x 14'6"
Kitchen	4.15m x 2.53m	13'7" x 8'4"
Master Bedroom	4.51m x 3.03m	14'10" x 9'11"
Bedroom 2	3.10m x 3.00m	10'2" x 9'10"



Audley Chalfont Dene
Rickmansworth Lane, Chalfont St Peter, Buckinghamshire SL9 0LX
01494 876 173 chalfontsales@audleyvillages.co.uk
www.audleyvillages.co.uk

Built in wardrobes in bedrooms have not been included in the overall dimensions.
Maximum measurements shown. These pages are intended for marketing purposes only.
Designs vary according to plot and all details should be checked at the Sales office.
Sept 2020

Audley Chalfont Dene

5 Portland Court
Two bedroom first floor apartment



Two bedroom apartment

This lovely two bedroom apartment is conveniently located on the first floor of Portland Court and enjoys a spacious living room that offers direct access to the private terrace area. The property offers two good-sized bedrooms, including the master which benefits from fitted wardrobes and an en suite shower room. There is a modern SieMatic kitchen with integrated appliances and a family bathroom with Villeroy & Boch sanitaryware.



Property specifications

- First floor apartment
- Private balcony accessed via the spacious living room
- Separate SieMatic kitchen with integrated appliances
- Master bedroom with an en suite shower room
- Guest bedroom
- Family bathroom with Villeroy & Boch sanitaryware
- Former show apartment
- Allocated parking space



Guide Price £599,500 (other fees apply)

Monthly management fee £878.37

Annual ground rent £500

Viewing by appointment with the sales office.

Audley Chalfont Dene
Rickmansworth Lane, Chalfont St Peter, Buckinghamshire SL9 0LX
01494 876 173 chalfontsales@audleyvillages.co.uk
www.audleyvillages.co.uk

Photos are for illustration purposes only.

