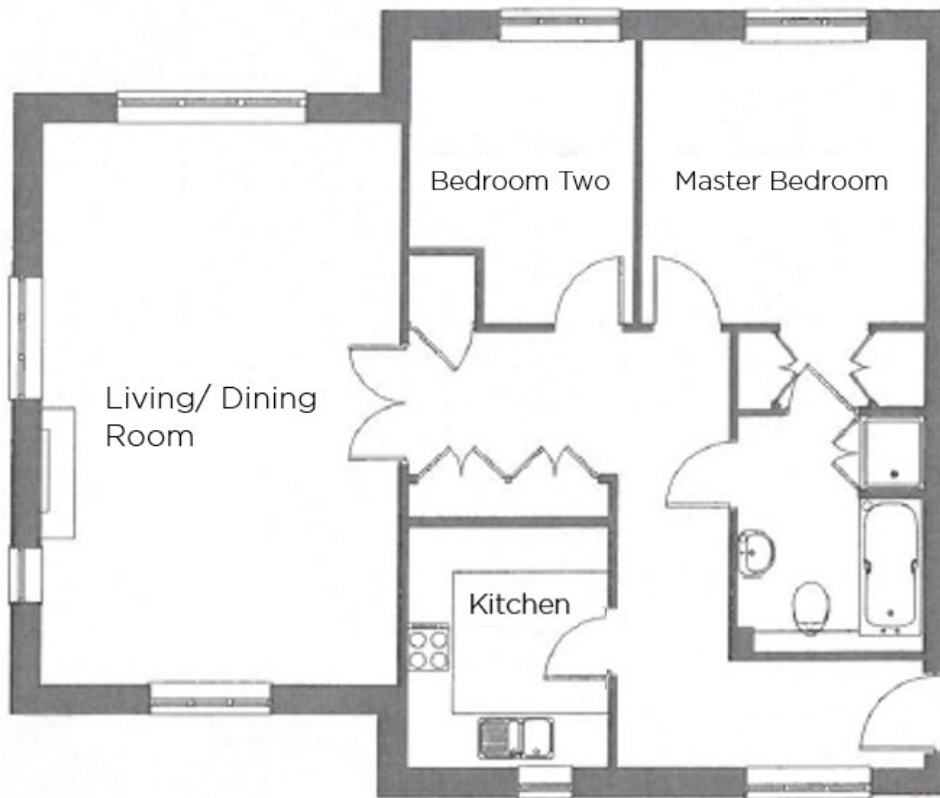



# Audley St Elphin's Park

5 Crompton Close  
Two bedroom 'pre-owned' first floor apartment



Internal Measurements	Metric (m)	Imperial (ft)
Kitchen	2.4m x 2.9m	8'0" x 9'7"
Living/Dining Room	4.4m x 6.9m	14'6" x 22'8"
Master Bedroom	3.5m x 3.45m	11'6" x 11'4"
Bedroom Two	2.7m x 3.45m	9'0" x 11'4"

Energy Efficiency Rating		Current	Potential
<i>Vary energy efficient - lower running costs</i>			
(92 plus)	<b>A</b>	85	85
(81-91)	<b>B</b>		
(69-80)	<b>C</b>		
(55-68)	<b>D</b>		
(39-54)	<b>E</b>		
(21-38)	<b>F</b>		
(1-20)	<b>G</b>		
<i>Not energy efficient - higher running costs</i>			
England & Wales		EU Directive 2002/91/EC 	

Audley St Elphin's Park  
Dale Road South, Darley Dale, Matlock DE4 2RH  
01629 733 337 [stelphinssales@audleyvillages.co.uk](mailto:stelphinssales@audleyvillages.co.uk)

Built in wardrobes in bedrooms have not been included in the overall dimensions.  
Maximum measurements shown. These pages are intended for marketing purposes only.  
Designs vary according to plot and all details should be checked at the Sales office.  
July 2017

# Audley St Elphin's Park

5 Crompton Close  
Two bedroom 'pre-owned' first floor apartment



## Two Bedroom Apartment



This two bedroom first floor apartment located in a desirably close position to St Elphin's House within Crompton Close, allows for easy access to all of the villages amenities including the swimming pool, gym and restaurant. The property features a spacious living room, a light master bedroom, separate guest bedroom and a Jack & Jill style bathroom.



## Property specifications

- Light and airy master bedroom
- Guest bedroom
- Large triple aspect living room
- Jack & Jill style bathroom
- Located conveniently close to St Elphin's House
- Allocated parking space

**£280,000** (other fees apply)

Monthly management fee £727.90  
Annual ground rent £100

Viewing by appointment with the sales office.

Audley St Elphin's Park  
Dale Road South, Darley Dale, Matlock DE4 2RH  
01629 733 337 [stelphinsales@audleyvillages.co.uk](mailto:stelphinsales@audleyvillages.co.uk)

