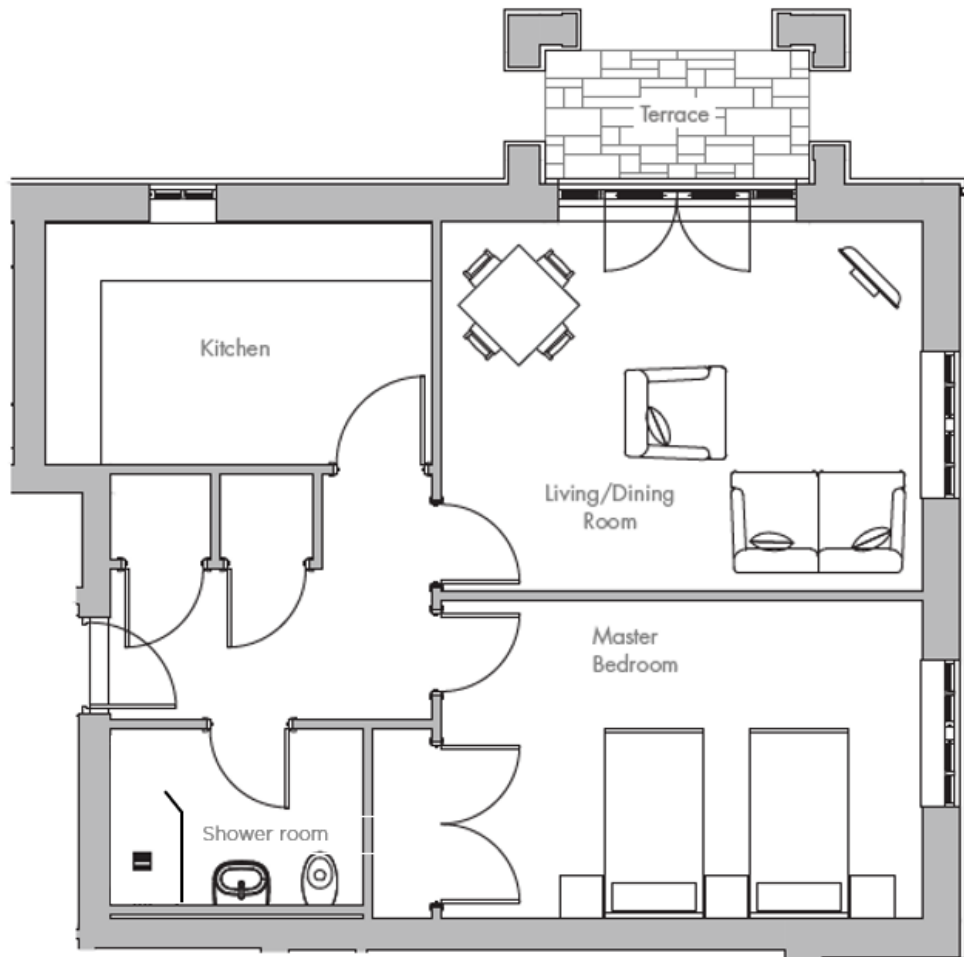
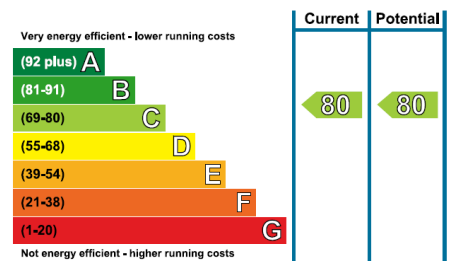


Audley St Elphin's Park

5 Pollard Way
One bedroom pre-owned apartment



Internal Measurements	Metric (m)	Imperial (ft)
Living/Dining Room	5.07m x 3.88m	16'8" x 12'9"
Kitchen	4.08m x 2.56m	13'5" x 8'5"
Master Bedroom	5.07m x 3.37m	16'8" x 11'1"
Terrace	2.79m x 1.36m	9'2" x 4'5"
Total Sq.ft 704		



Audley St Elphin's Park
Dale Road South, Darley Dale, Matlock DE4 2RH
01629 733 337 stelphinssales@audleyvillages.co.uk

Built in wardrobes in bedrooms have not been included in the overall dimensions.
Maximum measurements shown. These pages are intended for marketing purposes only.
Designs vary according to plot and all details should be checked at the Sales office.
April 2019

Audley St Elphin's Park

5 Pollard Way
One bedroom pre-owned apartment



One bedroom ground floor apartment

This attractive one bedroom apartment is conveniently located on the ground floor of Pollard Way. The property enjoys a spacious living room that offers direct access to the private terrace via French doors. The master bedroom is well-appointed and benefits from fitted wardrobes. The apartment is beautifully finished by a modern kitchen with integrated appliances and a separate bathroom.



Property specifications

- Spacious living room with access to a private terrace with hillside views
- Large master bedroom with fitted wardrobes
- Bathroom with Villeroy & Boch sanitaryware
- Modern SieMatic kitchen with integrated appliances
- Allocated parking



£240,000 (other fees apply)

Monthly management fee £720.54
Annual Ground Rent £500

Viewing by appointment with the sales office.

Audley St Elphin's Park
Dale Road South, Darley Dale, Matlock DE4 2RH
01629 733 337 stelphinssales@audleyvillages.co.uk

