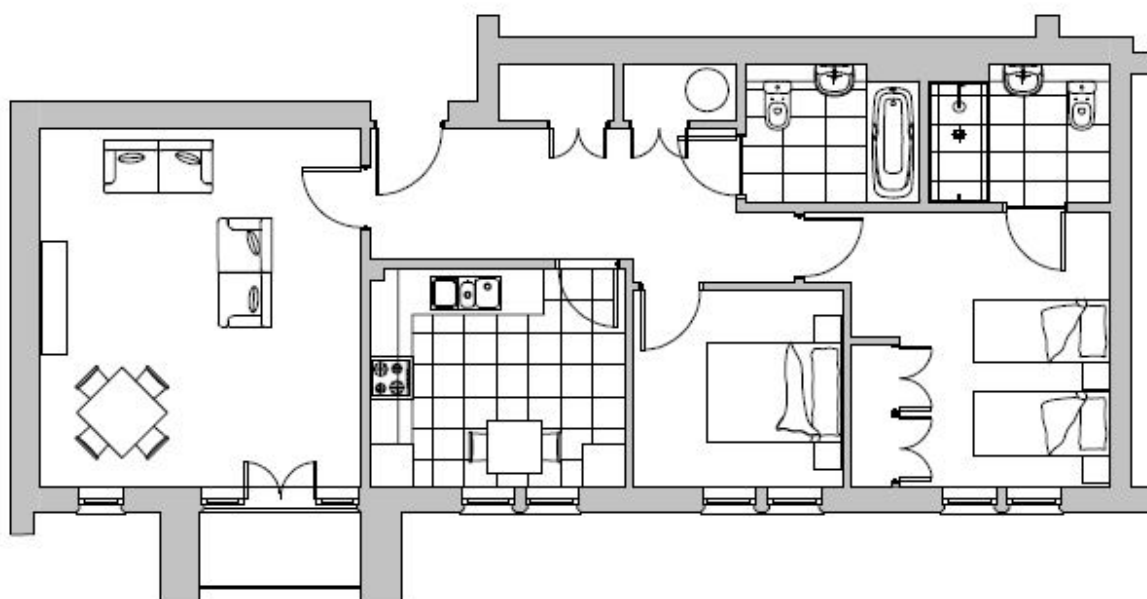


Audley Binswood

5 Newbold Court
Pre-owned Apartment



Internal Measurements	Metric (m)	Imperial (ft)
Kitchen	3.60m x 3.05m	11'9" x 10'9"
Living room/Dining Room	5.00m x 4.5m	16'4" x 14'9"
Master Bedroom	4.3m x 3.85m	14'1" x 12'7"
Bedroom 2	2.95m x 2.75m	9'8" x 9'0"

Audley Binswood
Binswood Hall, Binswood Avenue, Leamington Spa CV32 5SF
01784 457 615 binswoodsales@audleyvillages.co.uk
www.audleyvillages.co.uk

Built-in wardrobes in bedrooms have not been included in the overall dimensions.
Maximum measurements shown. These pages are intended for marketing purposes only.
Designs vary according to plot and all details should be checked at the Sales Office.
December 2017



Audley Binswood

5 Newbold Court
Pre-owned Apartment



Two Bedroom Apartment

This large two double bedroom, two bathroom property is located on the second floor with a private balcony overlooking the main courtyard at Audley Binswood. Easy access to the main hall and facilities.

Property specifications:

- Private Balcony
- Integrated wardrobes in master bedroom
- Siematic kitchen with integrated Neff appliances along and Corian worktops.



Guide price £410,000 (other fees apply)

Viewings by appointment with the sales office

Audley Binswood
Binswood Hall, Binswood Avenue, Leamington Spa CV32 5SF
01784 457 615 binswoodsales@audleyvillages.co.uk
www.audleyvillages.co.uk

