

## 5 Brunswick House





# 5 Brunswick House

## Two bedroom second floor apartment

This spacious two bedroom apartment sits to the east of the Audley Binswood estate with excellent access to the superb facilities of the main house. It has its very own private balcony accessed through double doors from the large living room.

### Property specifications

- Main bedroom with double fitted wardrobes and en-suite shower room
- Second double bedroom
- Separate bathroom
- SieMatic kitchen with Corian worktops
- Living room with private balcony and space for dining
- Two storage cupboards in hallway

Guide Price £430,000 (other fees apply)

Monthly management: £865.30

Annual ground rent: £500

Monthly bistro credit: £64.09

Council Tax Band: B

Viewing by appointment with the sales office.

01926 339 484

[binswoodsales@audleyvillages.co.uk](mailto:binswoodsales@audleyvillages.co.uk)

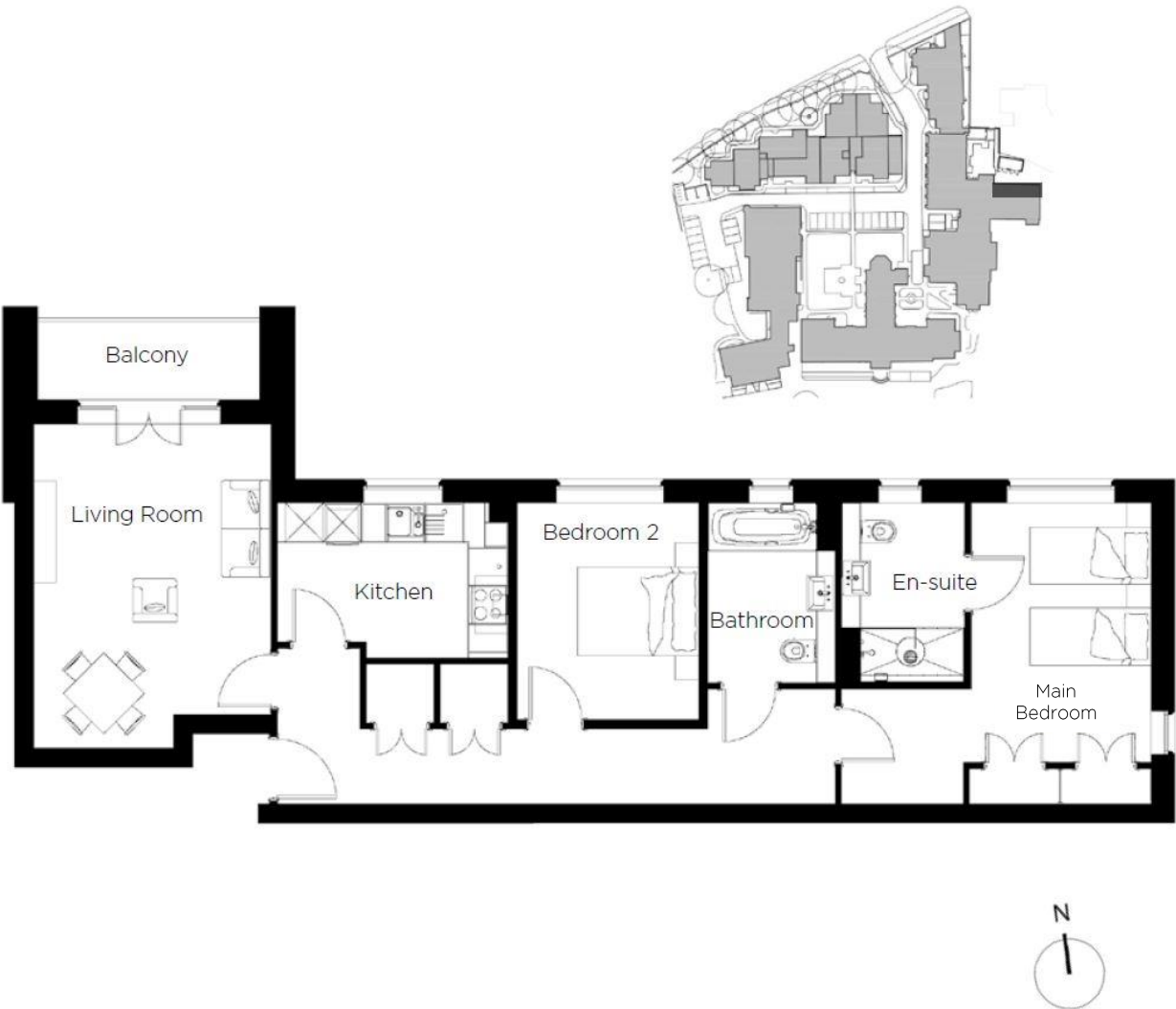


# 5 Brunswick House

Internal Measurements	Metric (m)	Imperial (ft)
Living Room	5.09 x 3.74	16'8" x 12'3"
Kitchen	3.63 x 2.43	11'11" x 8'0"
Main Bedroom	4.07 x 2.82	13'4" x 9'3"
Bedroom 2	3.40 x 2.85	11'2" x 9'4"
Sq. ft 898		

Built in wardrobes in bedrooms have not been included in the overall dimensions. Maximum measurements shown.

Score	Energy rating	Current	Potential
92+	A	82   B	82   B
81-91	B		
69-80	C		
55-68	D		
39-54	E		
21-38	F		
1-20	G		



These pages are intended for marketing purposes only. Designs vary according to plot and all details should be checked at the Sales office. February 2022.



