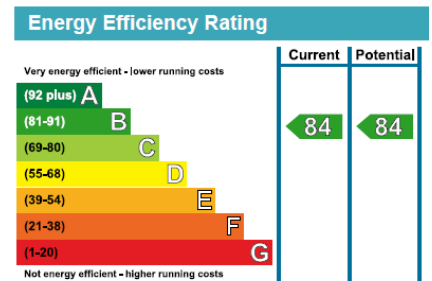
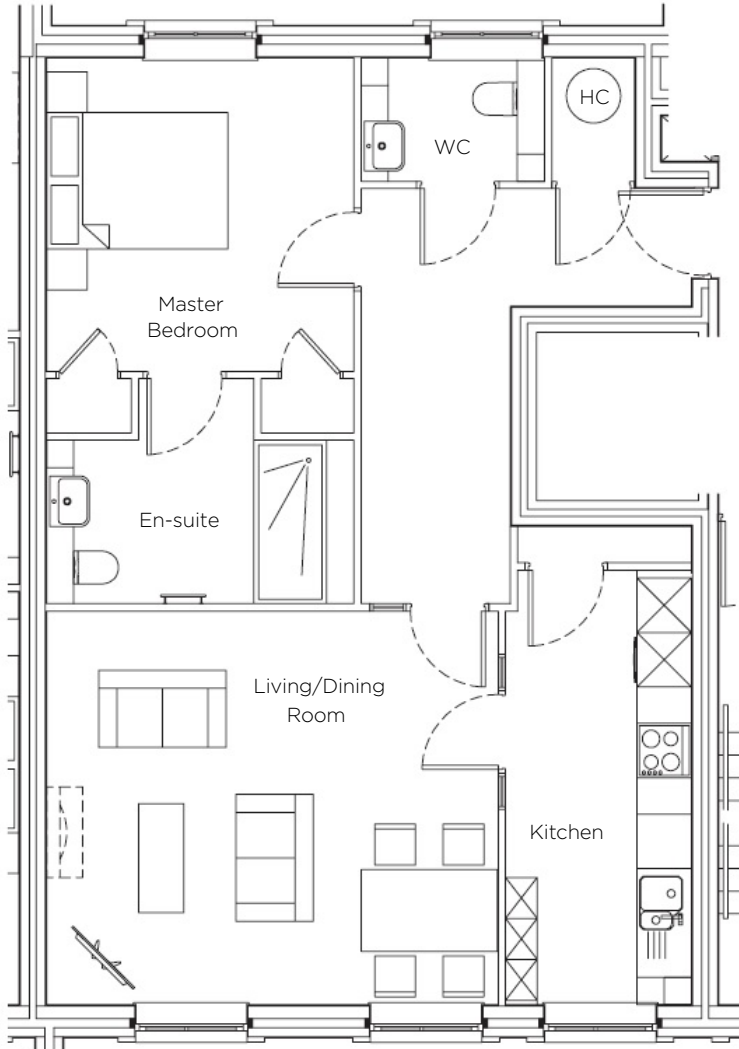


# Audley Inglewood

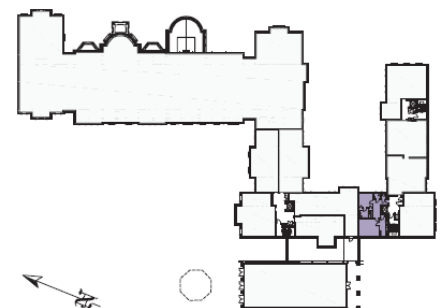
54 Inglewood House  
First Floor Resale Apartment



## Internal Measurements      Metric (m)      Imperial (ft)

Kitchen	4.79m x 2.05m / 15' 9" x 6' 9"
Living / Dining room	4.98m x 4.34m / 16' 4" x 14' 3"
Master bedroom	4.13m x 3.39m / 13' 7" x 11' 1"

Total Sq.ft 706



Audley Inglewood  
Templeton Road, Kintbury, Hungerford RG17 9AA  
01488 682100    [inglewoodsales@audleyvillages.co.uk](mailto:inglewoodsales@audleyvillages.co.uk)  
[www.audleyvillages.co.uk](http://www.audleyvillages.co.uk)

Built-in wardrobes in bedrooms have not been included in the overall dimensions. Maximum measurements shown. These pages are intended for marketing purposes only. Designs vary according to plot and all details should be checked at the Sales Office. January 2017



# Audley Inglewood

54 Inglewood House  
First Floor Resale Apartment



## 1 bedroom first floor apartment

Overlooking the Inglewood grounds, this charming dual aspect apartment has a spacious living/dining room and separate kitchen. The bedroom has fitted wardrobes as well as an en suite walk-in shower room.

Property specifications:

- Generous reception room with floor to ceiling windows
- Separate fully fitted kitchen
- Bedroom with fitted wardrobes
- En-suite walk-in shower room in bedroom
- Separate cloakroom

**Price £365,000 (other fees apply)**

Monthly Management Fee £732.36

Monthly bistro credit £56.33

Annual Ground Rent £500

Viewings by appointment with the sales office.

Audley Inglewood  
Templeton Road, Kintbury, Hungerford RG17 9AA  
01488 682100 [inglewoodsales@audleyvillages.co.uk](mailto:inglewoodsales@audleyvillages.co.uk)  
[www.audleyvillages.co.uk](http://www.audleyvillages.co.uk)

